

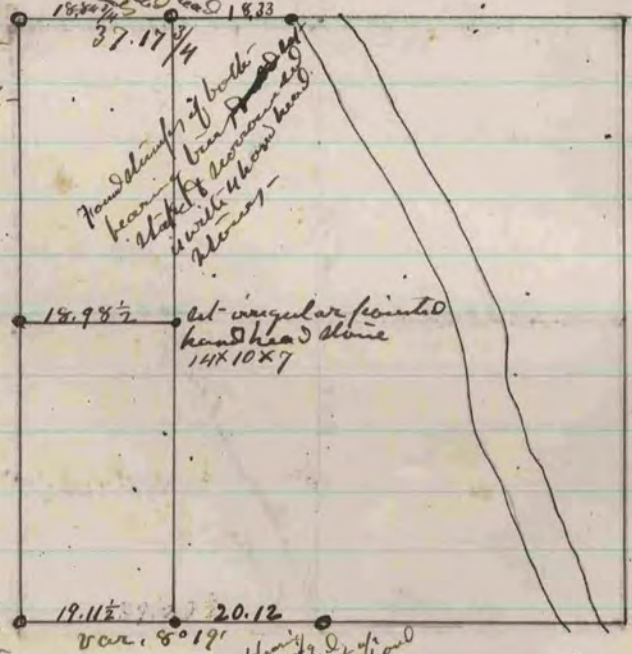
RECORDED
INDEXED
JUL 2 1870

Book 300 p. 5
June 26 & July 1, 1870



Set irregular pointed hard head
stone 18x9x7 pointed up
it with 4 hard head stones

~~Set 18x9x7~~
Found old stake
bearing tree - set irreg-
ular pointed hard head
stone 18x9x7 pointed up
it surrounded it with 4
hard head stones



Found stumps of both
bearing trees - set irregular
triangular hard head stone,
15x11x9 surrounded it
with 4 hard head stones

Found stumps of bearing
trees & found large hard
head stone at corner
surrounded by 4 hard
heads - west bearing tree
should read S 78° W 132

Found stake & west bearing
tree - set irregular pointed
hard head stone 14x10x7
surrounded it with 4
hard stones

The above is a record & plot of a survey made ^{by me} on Section 31
Fullon, July 2^d 1870
Edward Ruger
Dep. Co. Surveyor