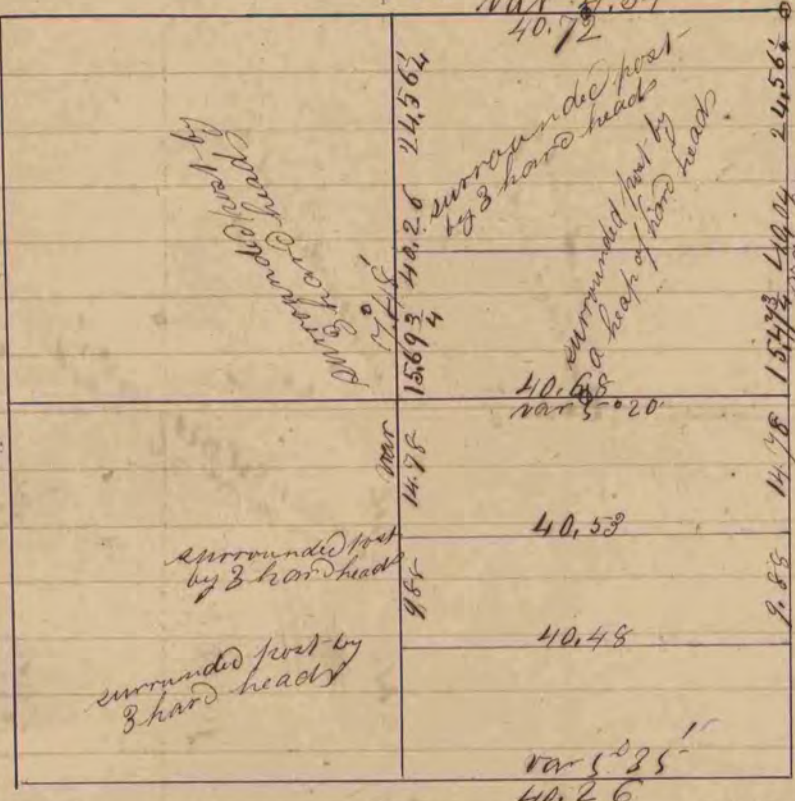


Surrounded post by 2 hard heads
+ 1 lime stone
R.M.T. Cap 15.76 408.67
var 5.07

Surrounded post
by 3 hard heads
var 40.72

Surrounded post
by 3 hard heads
var 40.84

Burr Oak 17561.30 W 132
" 12579.81 E 155 1/2
var 5.30



Cape Point

Surrounded post
by 3 hard heads

Surrounded post by 1 large
+ 4 small hard heads

Surrounded post by
3 hard heads

Surrounded post by
3 hard heads

Surrounded post
by 3 hard heads

A record and plat of a survey made on Section
27 Town 4 North of Range 14 East survey made
Oct 24th & 25th 1859 by Edward Rugg
County Surveyor for Rock County
Wisconsin

Lima

COUNTY SURVEYOR
RECORD 1 1851-1869