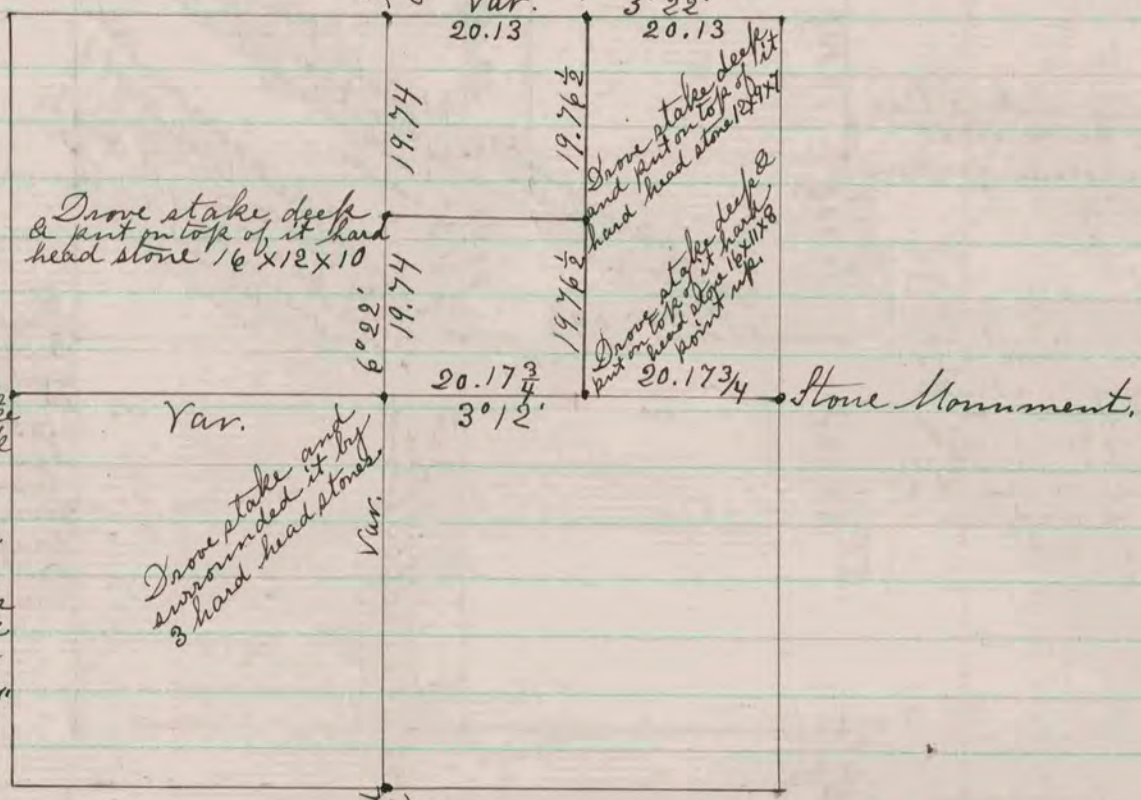


Ground stump of B. J. Drove stake deep & put on top of it hard head stone 27x22x18 point up. Said corner is in line of fence running east on south side of land - & in the west stop of dug out for highway



Round corner established by Locke - stake surrounded by 3 lime stones -

Stake surrounded by 5 lime stones - Corner established by Locke.

Drove stake and surrounded it by 3 hard head stones

Drove stake deep and put on top of it hard head stone 27x22x18

Drove stake deep & put on top of it hard head stone 16x12x10

Round Corner established by Dec. Stake surrounded by 4 lime stones under highway entomb.

The above is a record and plat of a Survey made by me on Section 13 Spring valley - April 10-1874

Edward Ruger
County Surveyor.

COUNTY SURVEYOR
RECORD 1859-1906