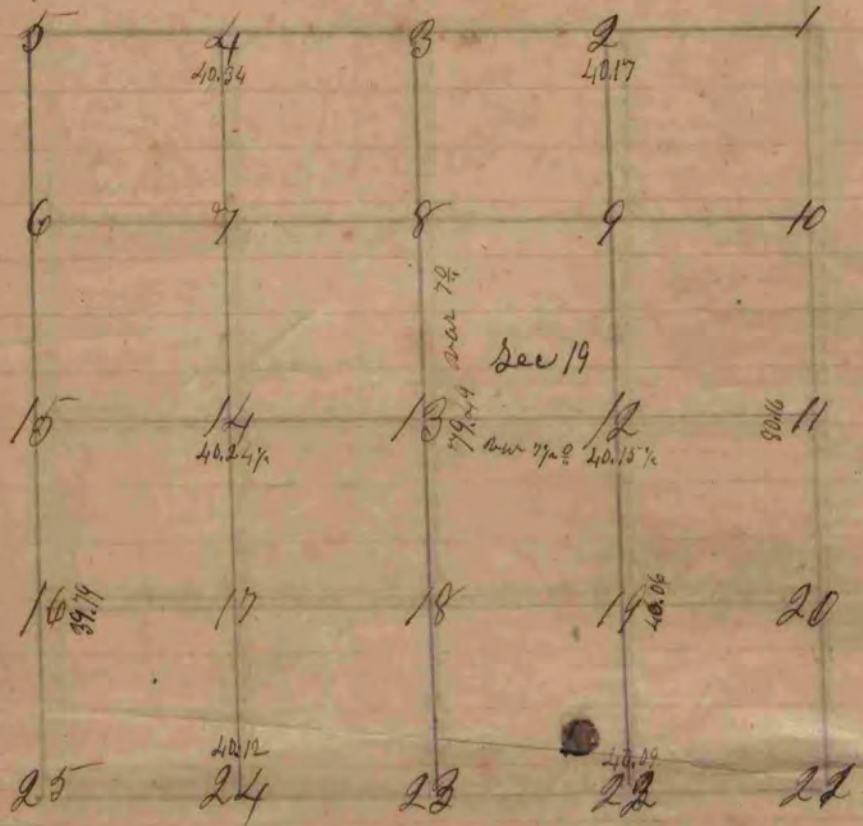


A plat of a survey made on section nineteen in the  
Town of Plymouth. Town two Range eleven



- fig 17 represents the centre of the South West quarter Section
  - fig 17 buried a lime stone even with the surface of the ground  
one foot long 8 inches wide and six inches thick
  - 14 buried a round stone 8 inches long 3 inches below  
the surface of the ground
  - 10 Rod B 14 S 87 & 30 no other
  - 2 Bl O 25 N 21 1/2 W 122 also Bl 122 N 43 1/2 W 190
  - 7 Post in Prairie
  - 12 Post on gravel knoll
  - 24 buried a stone the top even with the surface  
a gray stone 12 inches long and 8 inches thick.
- The above survey was made the 19th day April 1854  
Peter McLean County surveyor