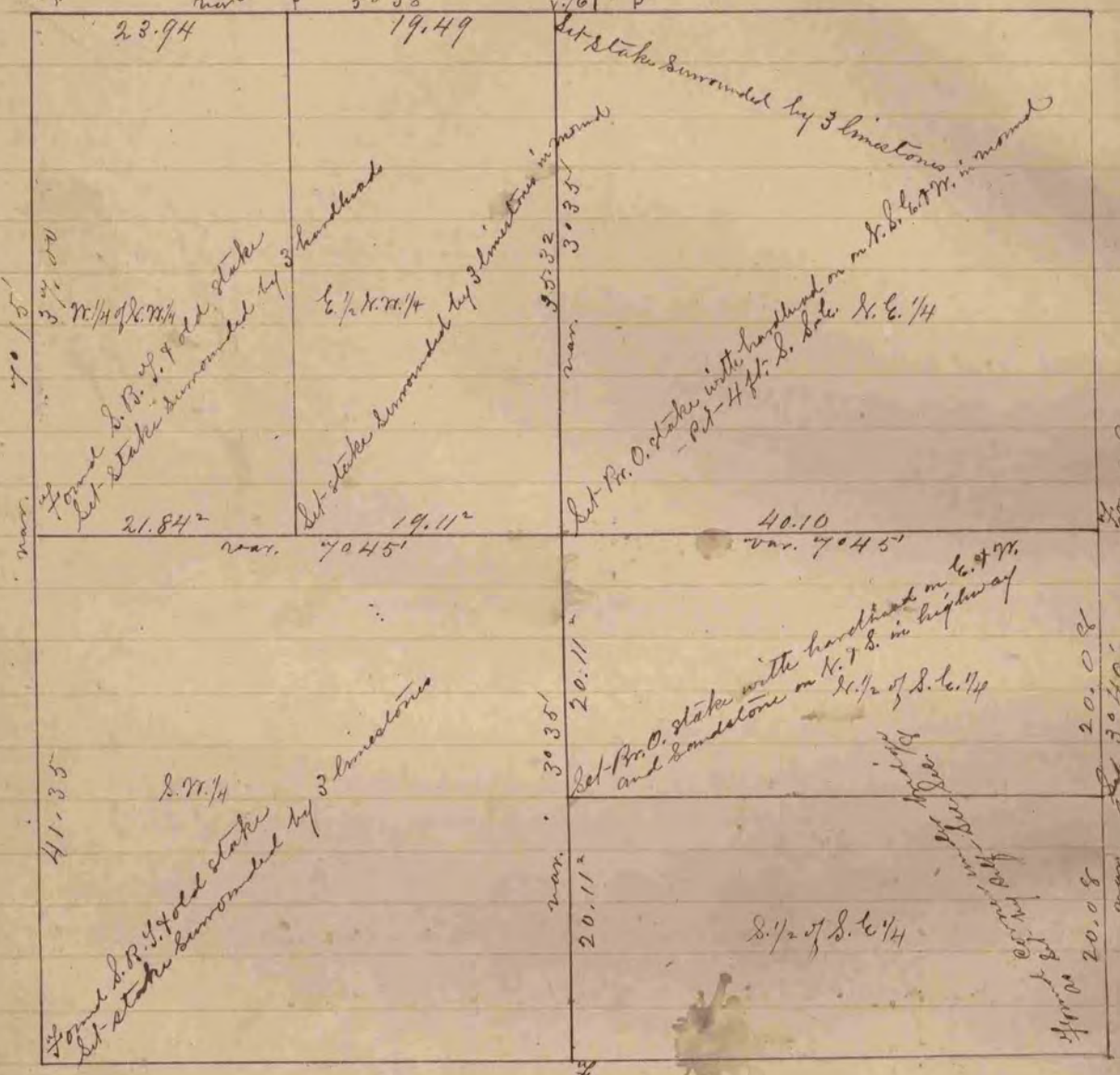


Found S.B. 1/4 and set stake with handhead on E. 1/2 N. 1/4 and 2 limestone on N. and 2 on S.
 Set stake surrounded by 2 handheads
 Found R. 1/4 distance to N.B. 1/4 should be 206 instead of 205
 Set stake with handhead on N. and limestone on E. 1/2 N. 1/4



Found R. 1/4 1/2 stone set on corner distance in notes instead of 4.86
 and distance to N. 1/4 S. 1/4 4.36 instead of 4.86
 Set R. 1/4 stake surrounded by 3 handheads

The above is a correct Record Plat of a
 Survey made by Nov. 20, 21 & 22, 1867 on Sec. 6 Springville
 S.D. Locke
 County Surveyor in & for Rock Co., Wis.

COUNTY SURVEYOR
 RECORD 1 1851-1869