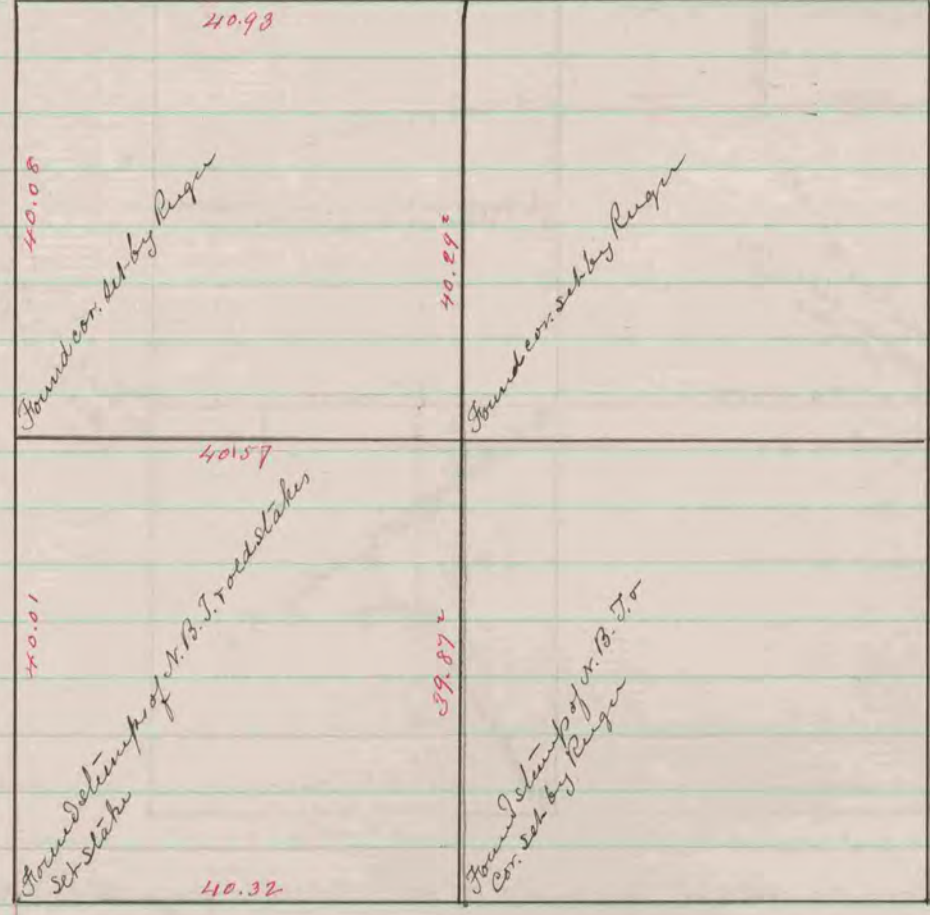
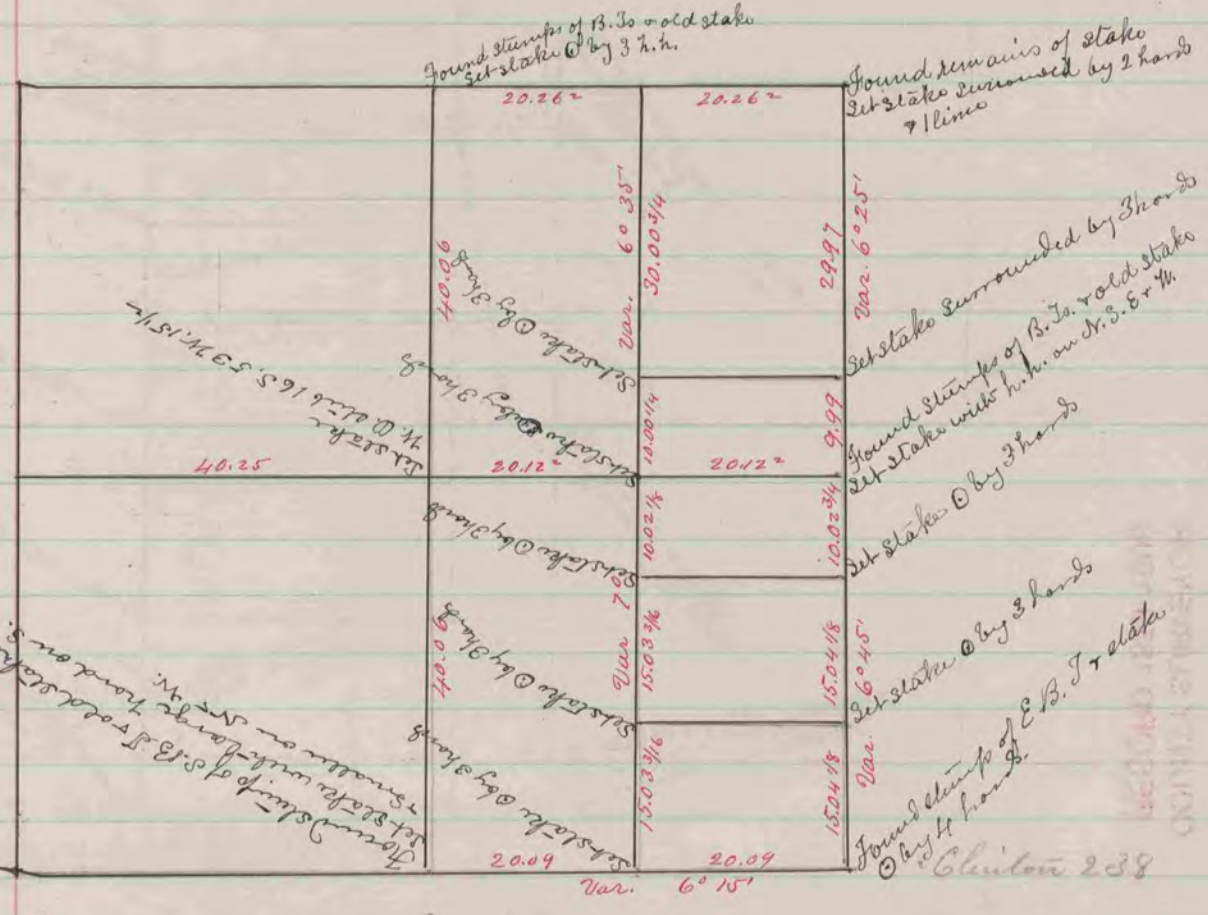


Sec. 22

B. S. gam. Found cor. set by Reuger



The above is a correct Record & Plat of a survey made by me
July 22, 1866 on Sec. 27, Lima S. D. Locke Co. Surveyor



The above is a correct Record & Plat of a survey
made by me July 16 & 17 1866 on Sec. 23, Clinton
S. D. Locke Co. Surveyor