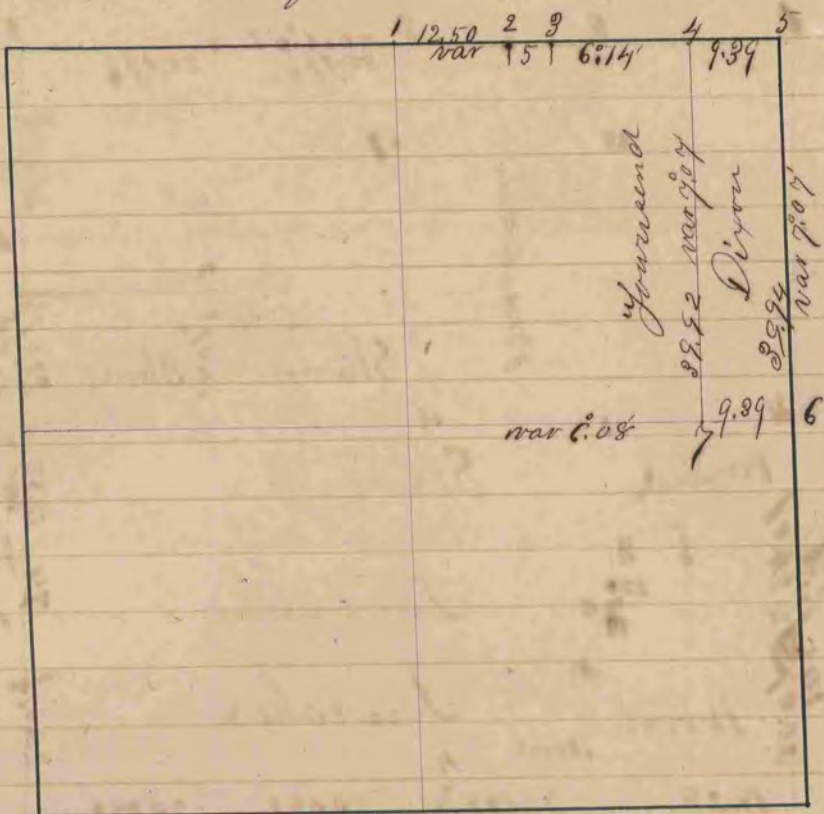


A Record and Plat of a Survey made in Sec 11, Town 1
Range 13 for Dixon and Townsend Surveyed Oct 24th
1859 by Edward Puffer County Surveyor of Rock County
Distances given in Chains
variations marked ~~of~~ on the lines

Wis
Justice



- Fig 1 the same as Fig 5 Sec 2 of same town
- " 2 Burr Oak $75^{\circ} 71' W 166^{\frac{1}{4}}$
- " " " $88^{\circ} 21' 35'' E 108^{\frac{3}{4}}$
- " 5 the same as at Fig 3 Sec 2 of same town
- " 6 Government witness Trus disaged put in post by averaging error