

A record and plat of a survey made on Sect 1 in Town 2 north
of Range 13 East

Surveyed May 25th 1859 by Edward Rugin
County Surveyor of Rock County Wis

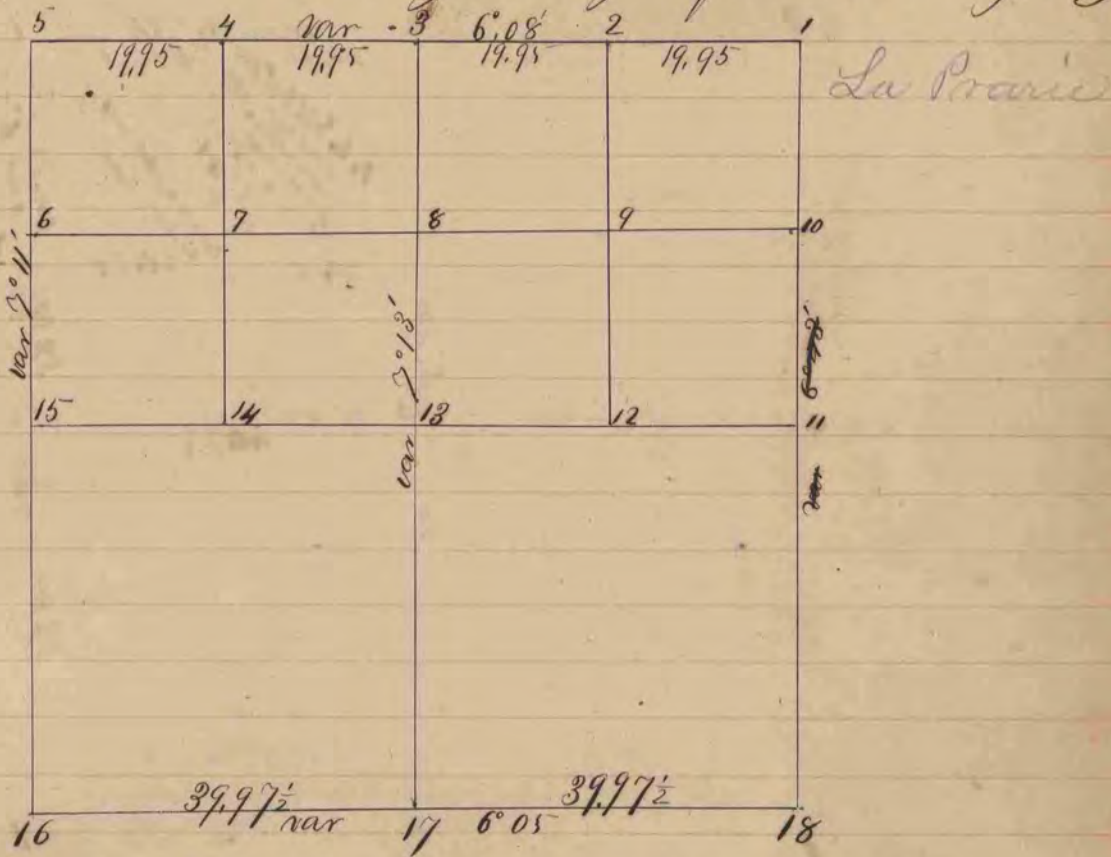


Fig 1 Surrounded post by 4 Lime Stones and took bearing Stone
Lime Stone 16 inches by 9 broad by 2 thick S 53° 04' E 55 var 6.50
Lime Stone 16 " " 8 " " " " S 48° 08' W 55 " "
Put in North 1/4 post by See Corners & Surrounded post by
3 Lime Stones

Fig 5 Surrounded post by 4 Lime Stones + one hard head and
planted witness Stones Lime Stone 14 X 8 X 4 - above
bench - S 73° 30' E 54 Lime Stone 10 X 9 S 76° 20' W 53 var 6.45

Fig 8 Surrounded post by 4 Lime Stones

Fig 10 Surrounded post by 4 Lime Stones

* Put in East 1/4 post (Fig 11) by See Corners and
Surrounded post by 4 Lime Stones

Fig 13 Surrounded post by 4 Lime Stones

Fig 15 8 " " " " " "

" 16 " " " " " "

" 17 " " " " " "

The East-line of the Section and the line
through the Centre north + south were run by
forward and back sights on account of local
attraction

* Reflections bound 1/4 post