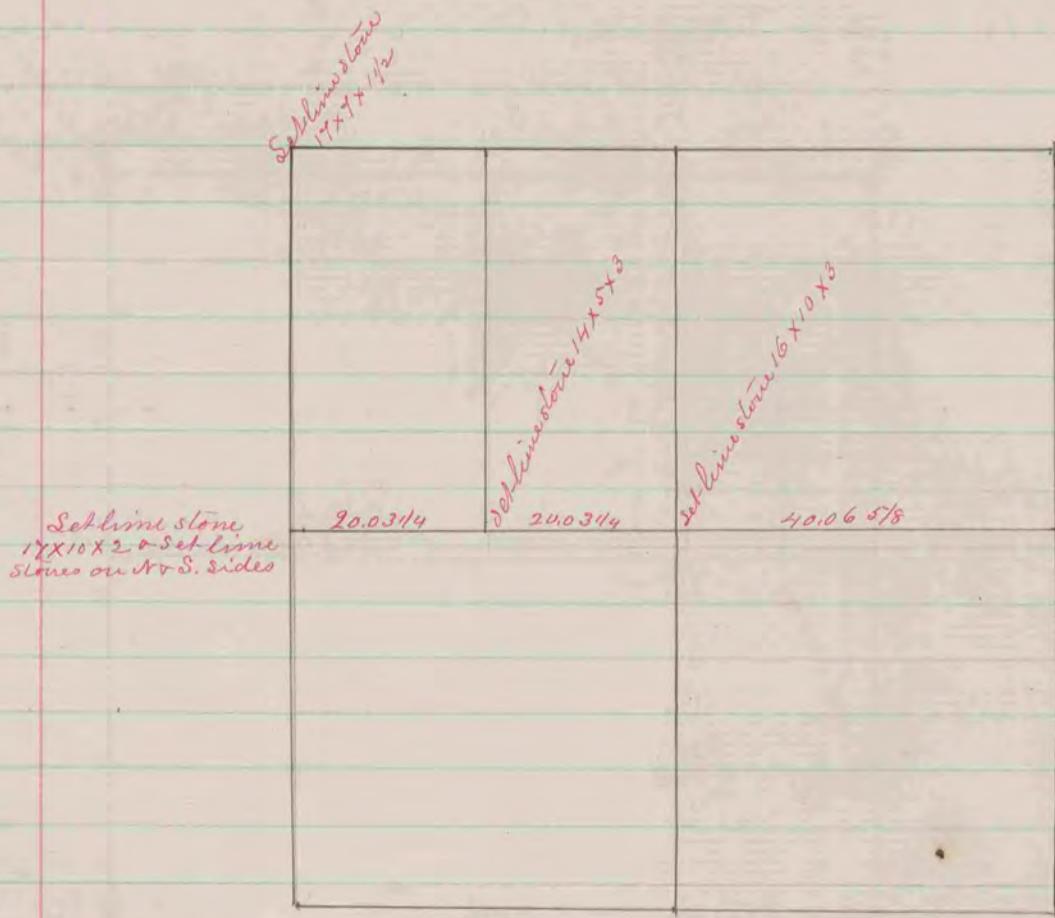


A Record & Plat of a survey made on Sec. 12
 T 1 R 14 April 26 1861 by Edward Ruger
 Clinton Co. Surveyor



COUNTY SURVEYOR
 RECORD 1859-1906

A Record & Plat of a survey made on Section
 17 T 2 R 13 May 2nd 1861 by Edward Ruger
 La Prairie Co. Surveyor