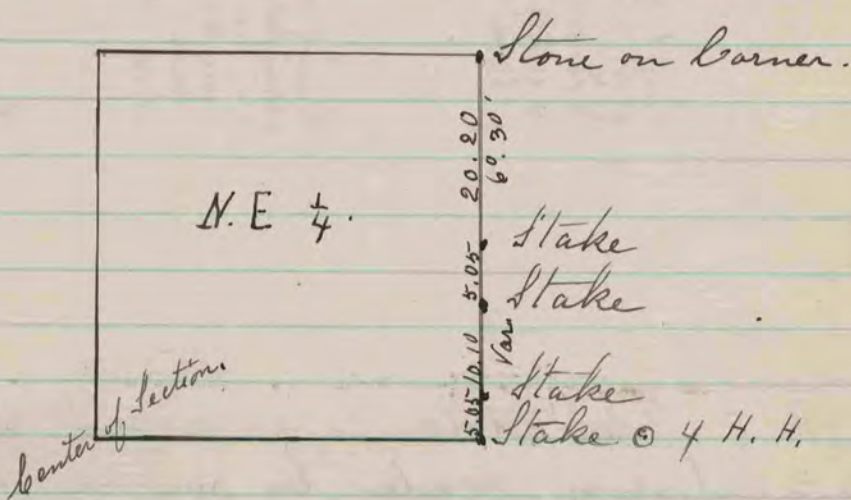




The above is a record & plat of a Survey made  
by me on the South East Quarter of Section 22  
Janesville April - 15 - 1875 -

Edward Ruger  
County Surveyor.



The above is a record & plat of a Survey made  
by me on the N.E. 1/4 of Section 22 Janesville  
Dec. 13. 1875 -

Edward Ruger  
County Surveyor.