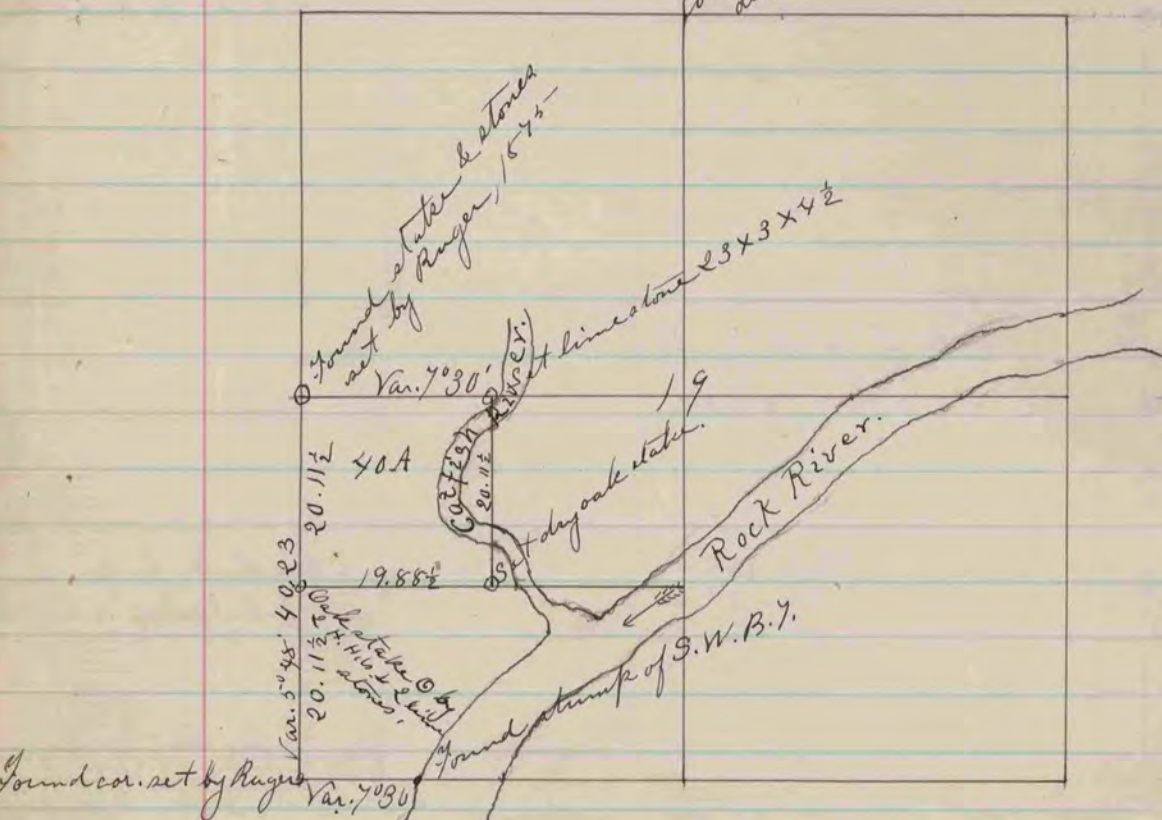


The above is a record & plat of a survey made by me Oct 15th 1880 on Sec. 14 Rock -

R. K. Lee - Dept. Co. Surveyor.

Corner lot B. 7. corner did not establish it.



The above is a record & plat of a survey made by me Oct 20th & 21st 1880 on Section 19 - Fulton

R. K. Lee -

Dept. Co. Surveyor