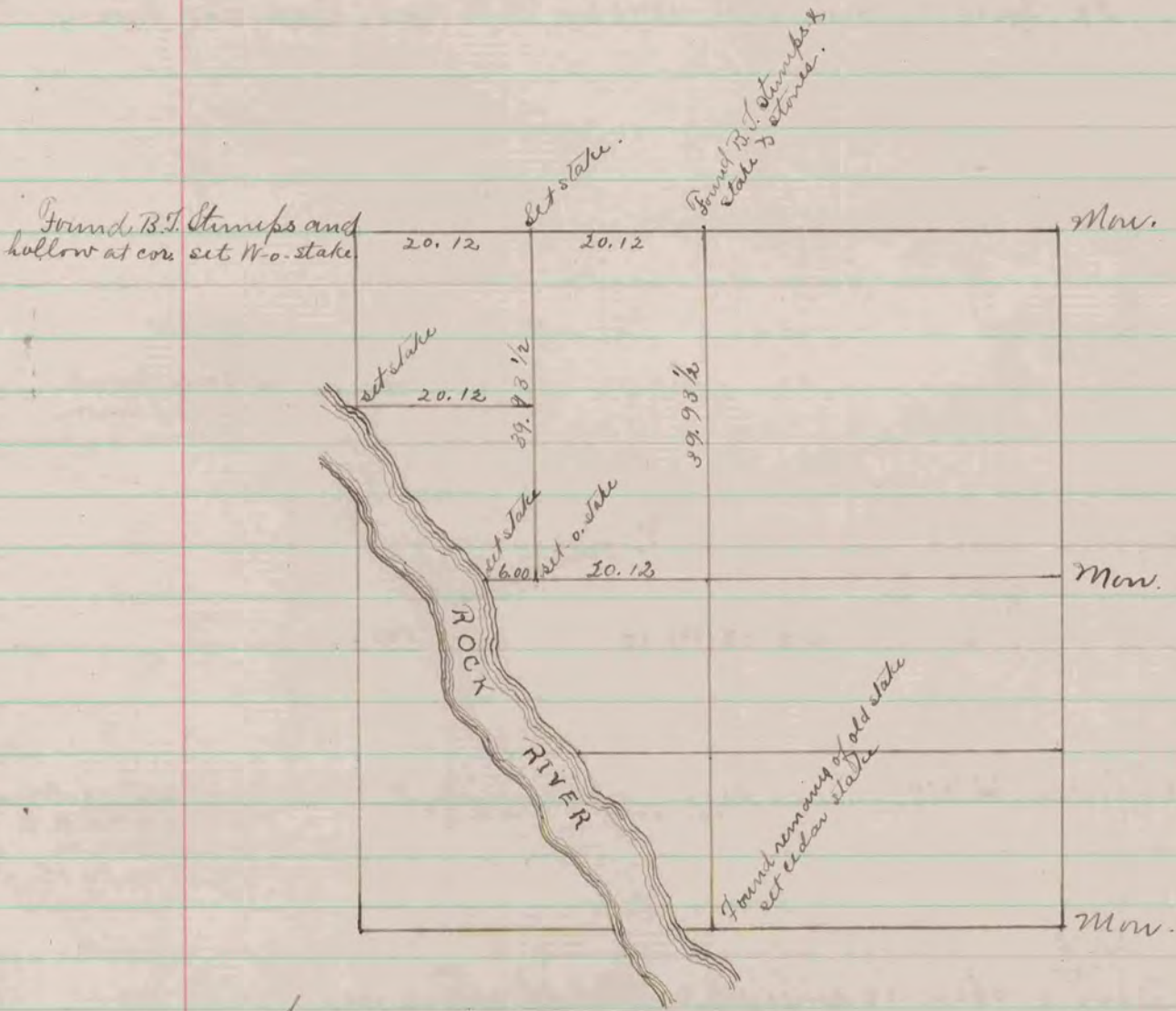


The above is a record & plat of a survey made on Section  
35 Milton, May 28<sup>th</sup> 1873 by P. K. Lee  
Dep. Co. Surveyor.



The above is a record & plat of a survey made on Section  
36 Rock, June 3<sup>rd</sup> 1873, by  
P. K. Lee  
Dep. Co. Surveyor.