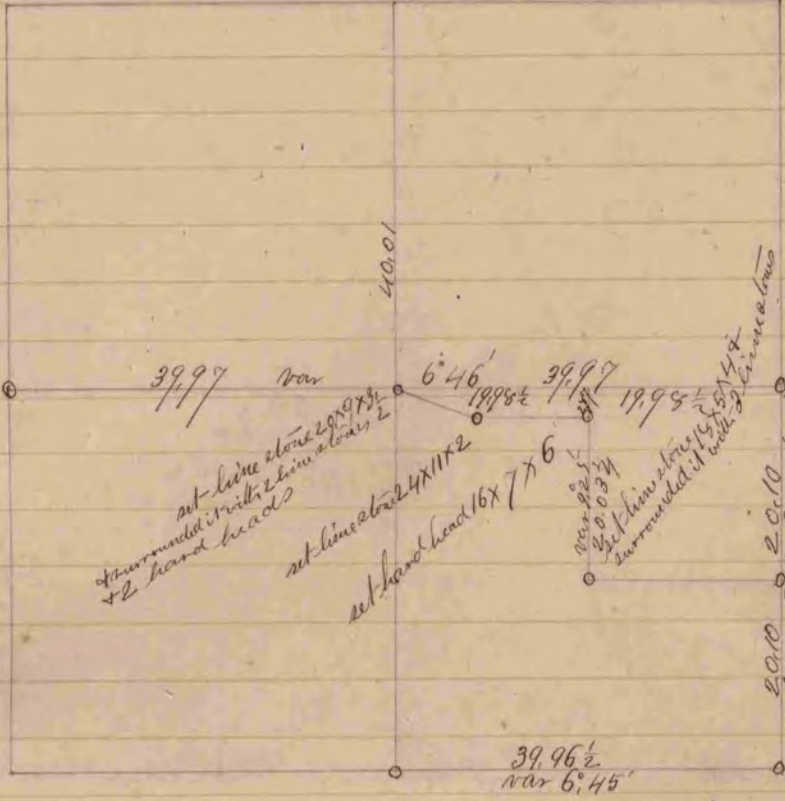


set line about 17x6x2
set line about lower on north & south
sides

set hard head 14x7x6
summed it by 3 hard heads



set hard head stone 15x6x3
summed it with 7 hand heads

set hard head 16x8x4 + summed
it by line stone 3 hand heads

set hard head 15x13x6 + summed
it by line stone 10 hand heads

set hard head 20x13x5

A record and plat of a survey made on ¹⁵ sec 20 Town R 14 Col. 11
18th 1860 by Edward Ruger
Bradford County Surveyor for Rock County

COUNTY SURVEYOR
RECORD 1 1851-1869