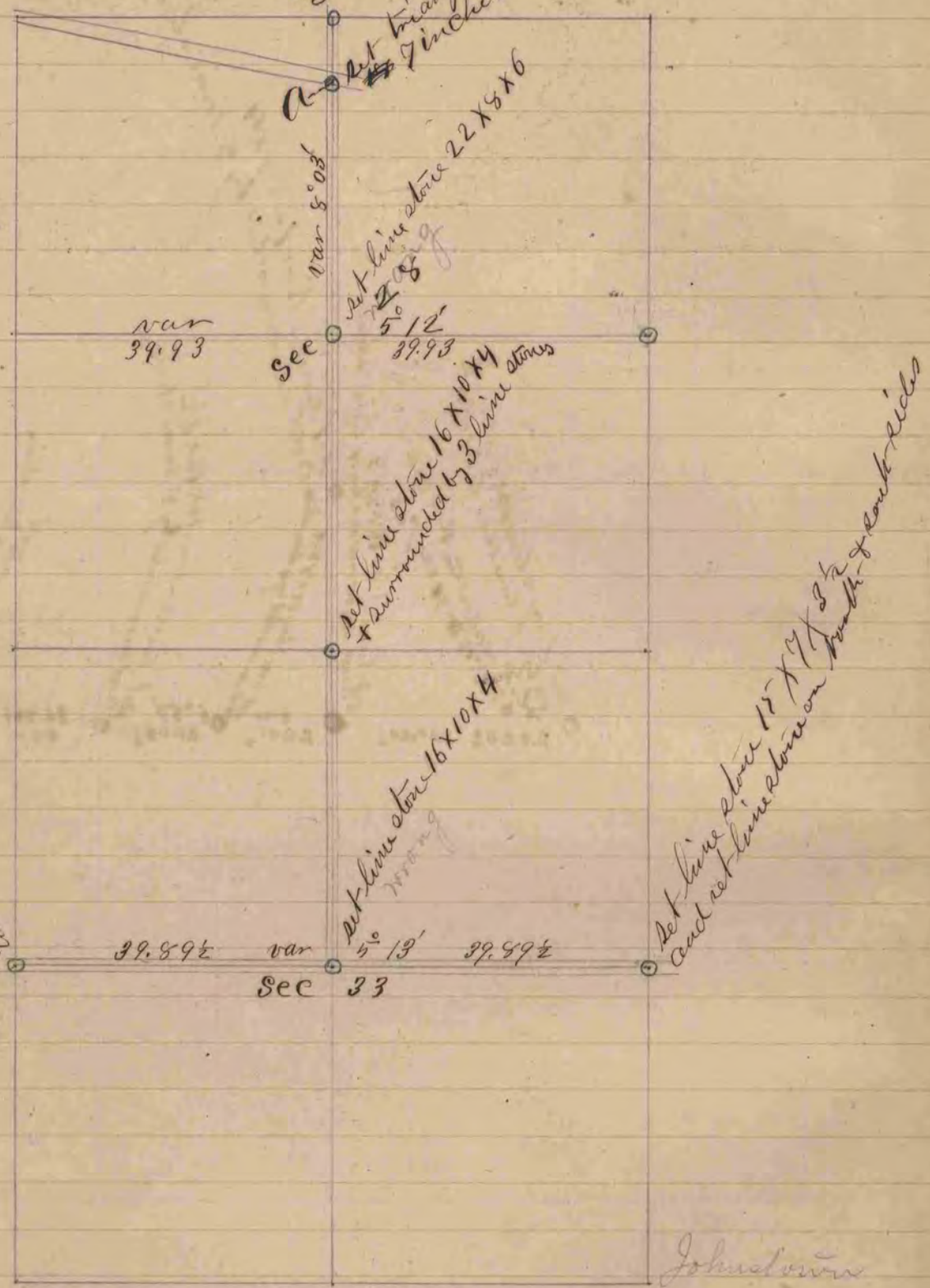


Set hand head 15x12x10
 Set triangular hand head stone
 7 inches on a side

Set line stone 15x12x10
 and set line stone on the north and south sides



A record and plat of the survey of a highway commencing at the center of section 33 Town 3 North of Range 14 East and running north along the quarter line between the N. W. + N. E. Quarters of said section 33 to the north-quarter post of said section thence north along the quarter line between the East & West halves of section 28 Town 2 North and Range 14 East to the point of intersection of said quarter with the south line of the Janesville and Milwaukee Road said point of intersection marked A on the plat. Surveyed September 18th 1868 by Edward Pagan County Surveyor for Rock County