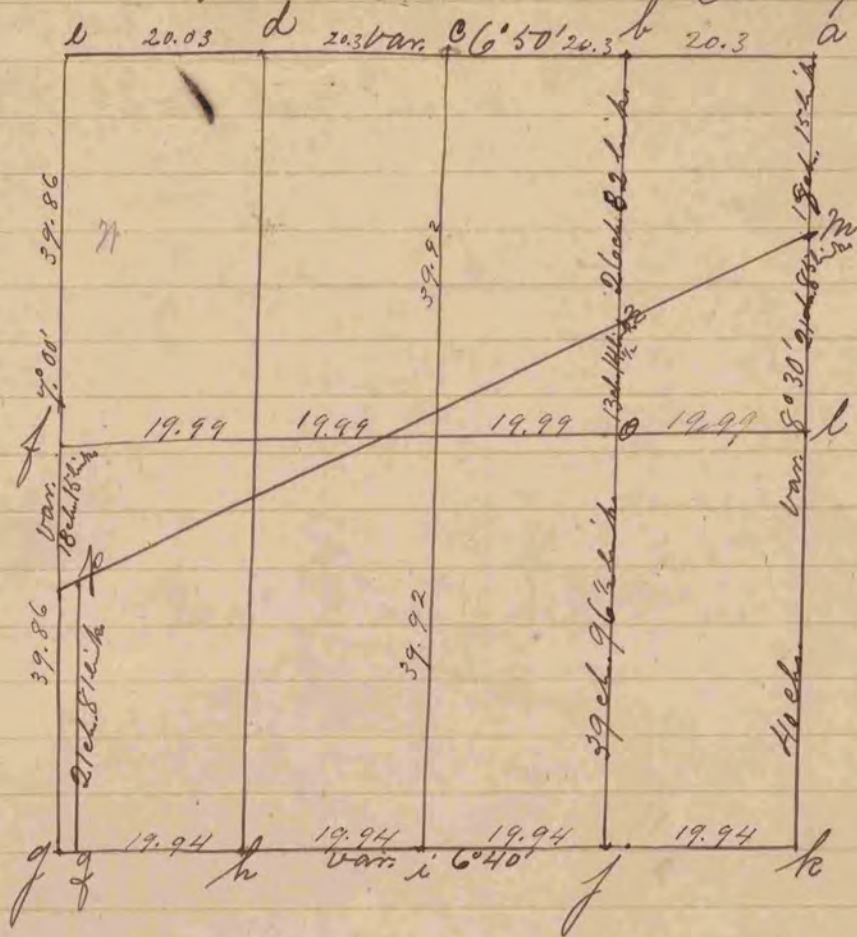


24  
 Record & Plat of a survey of sec. 27.3. R. 14. E. made 1863 184  
 Feb. 11, 12 & 13 by Sylvanus Locke County Surveyor



- "a" found Corner established by Tubbs. <sup>highway</sup> Stone in center
  - "b" set stake & 2 stones below surface surrounding stake
  - "c" " " " 3 " Found stump of southern witness tree
  - "d" " " " " " "
  - "e" Found stake in mound. Witness trees gone
  - "f" Found stone below surface - set by Raper
  - "g" " " stake " "
  - "h" " " " " "
  - "i" " " " " "
  - "j" " " " " "
  - "k" Found stake. Doubtless set by Tubbs
  - "l" Handhead Stone below surface
  - "m" " " " " "
  - "n" Limestone " "
  - "o" Stone, handhead " "
  - "p" stake & 3 stones surrounding stake
  - "q" Found Stone set by Raper
- Johnston