

A Record and Plat of a survey made on Sec 20 Town 1
Range 12 for Dexter Farr + J. Chamberlain Surveyed
March 7th + 8th by Edward Ruger County Surveyor of Rock
County Wisconsin Distances given in Chains
Beloit Variations marked on the lines

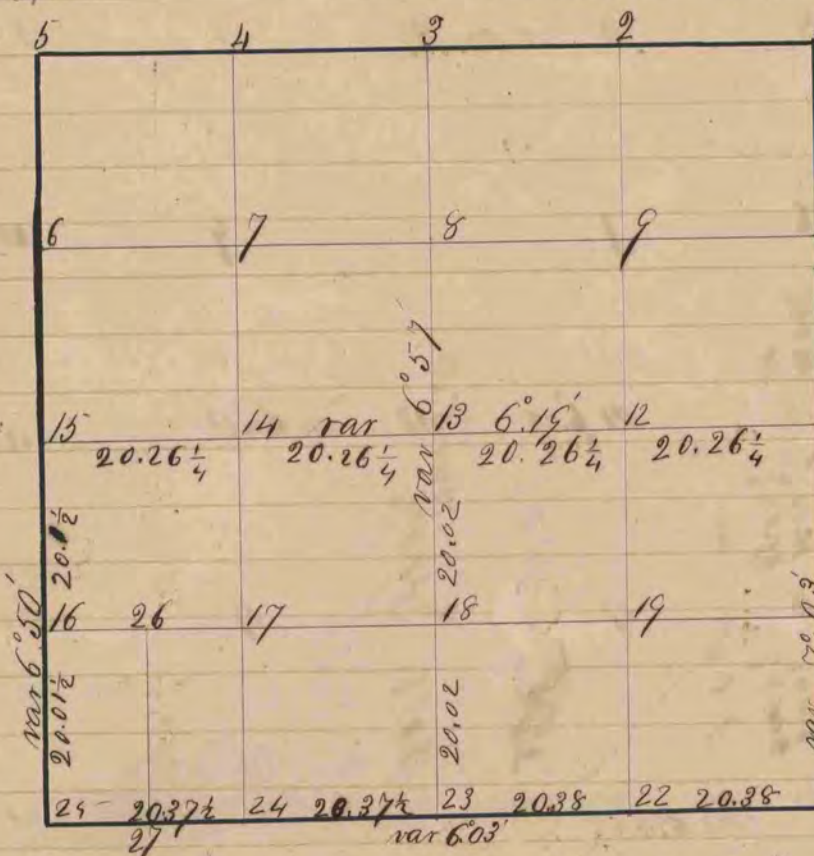


Fig 23 Continued
Black Oak 7 S 62° 05' W 97
Black Oak 2 N 37° 55' W 62
At Fig 25 Surrounded
post by 4 hard heads
Black Oak 6 N 12° 58' W 114 1/2
Burr Oak 1 1/2 N 76° 07' W 58 1/4
" " S 89° 45' W 145 1/3
Fig 27 took witness trees
Surrounded post by 4 hard heads
Aspen 4 N 13° 30' E 74 1/2
Black Oak 2 N 88° 32' E 71 1/4
Fig 26 Surrounded post by 3
hard head stones with
Burr Oak 3 S 82° 27' E 18 1/2
2 Wild Cherry 6 N 57° 45' W 43 1/4

At Fig 3 surrounded post by 3 Hard Head Stones
" " " " " " 4 Lime Stones
" " 13 " " " " 3 Hard heads + one Lime Stone
" " 15 " " " " 3 " "
" " " took new witness trees
" " " Burr Oak 9 N 35° 26' E 170
" " " " " 6 N 60° 04' W 174 1/4
" " " Black " 9 S 1° 57' W 151
" " 18 Surrounded post by 4 hard heads
" " " Burr Oak 6 N 6° 52' E 173 1/2
" " " " " S 28° 05' E 154
" " " " " S 10° 37' E 173 1/2
" " 20 Surrounded post by 3 hard heads
" " " Burr Oak 2 S 7° 03' W 54 1/2
" " " " " 8 N 2° 18' W 144 1/3
" " 21 Surrounded post by 4 lime stones
" " " Burr Oak 10 S 35° 50' E 196
" " " Black " 5 S 50° 43' W 155 1/3
" " " Hickory 2 N 64° 31' W 171 1/3
" " 23 Surrounded post by 3 hard heads
" " " Black Oak 6 S 49° 50' W 55 1/4 var 6° 55'