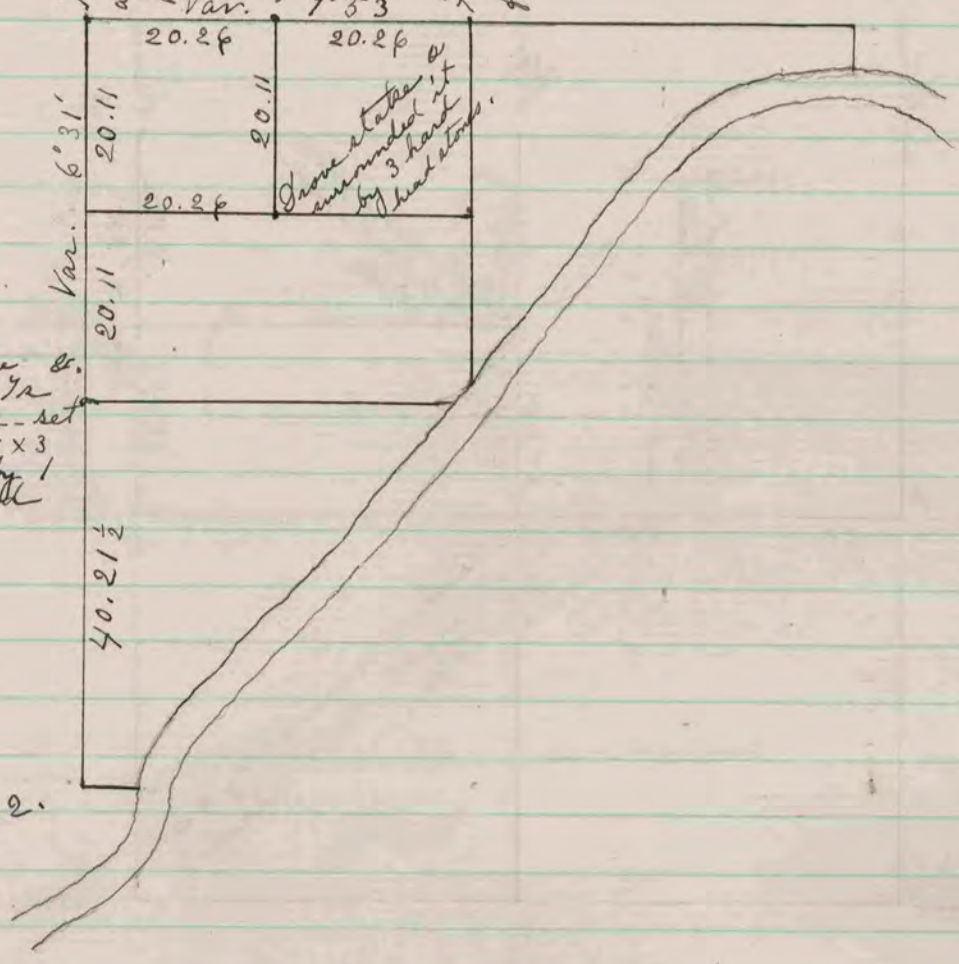


ROYALTY SURVEYOR  
RECORD 1859-1906

Found line stone at corner  
also found stump of S.W.  
B. 7, and where stump of N.E.  
B. 4, had been dug up.  
Drove stake and surrounded  
it by 3 hard head stakes.  
Found stake at corner also  
found both B. 4.



Found old stake &  
where stumps of B. 7 &  
had been dug up - set  
lime stone 16 X 15 X 3  
& surrounded it by 1  
line & 3 hard head  
stones.

See page 432.

The above is a record and plat of a  
Survey made by me on Section 16  
Fullton - August 12 & 13 - 1875 -  
Edward Ringer  
County Surveyor.

COUNTY SURVEYOR  
RECORD 1859-1906