

Corner established by self - see section 33 page 298.

Corner established by self - see section 34 page 425.

Corner established by self see section 35 - page 425.

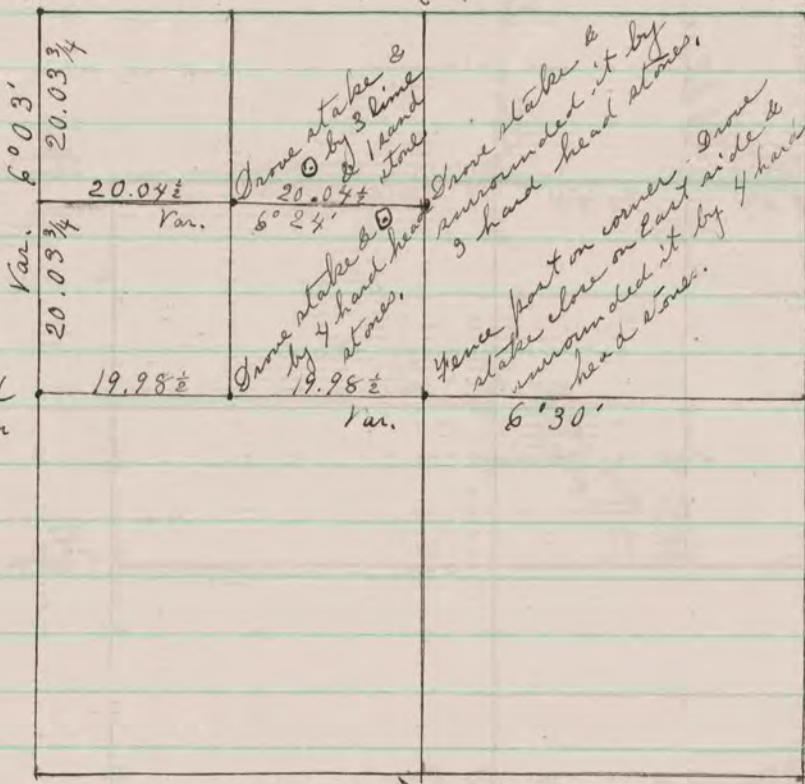
Corner established by self see section 33 page 298

Corner established by self see section 35 page 425.

Corner established by self see section 33 page 298

Corner established by self see section 34 page 425.

Corner established by self see section 35 - page 425.



I hereby certify that the above is a correct record and plat of a survey made by me on section 34 Fulton May 30<sup>th</sup> 1897.

Edward Ruger  
County Surveyor

RECEIVED COUNTY SURVEYOR  
RECORD 1859-1906