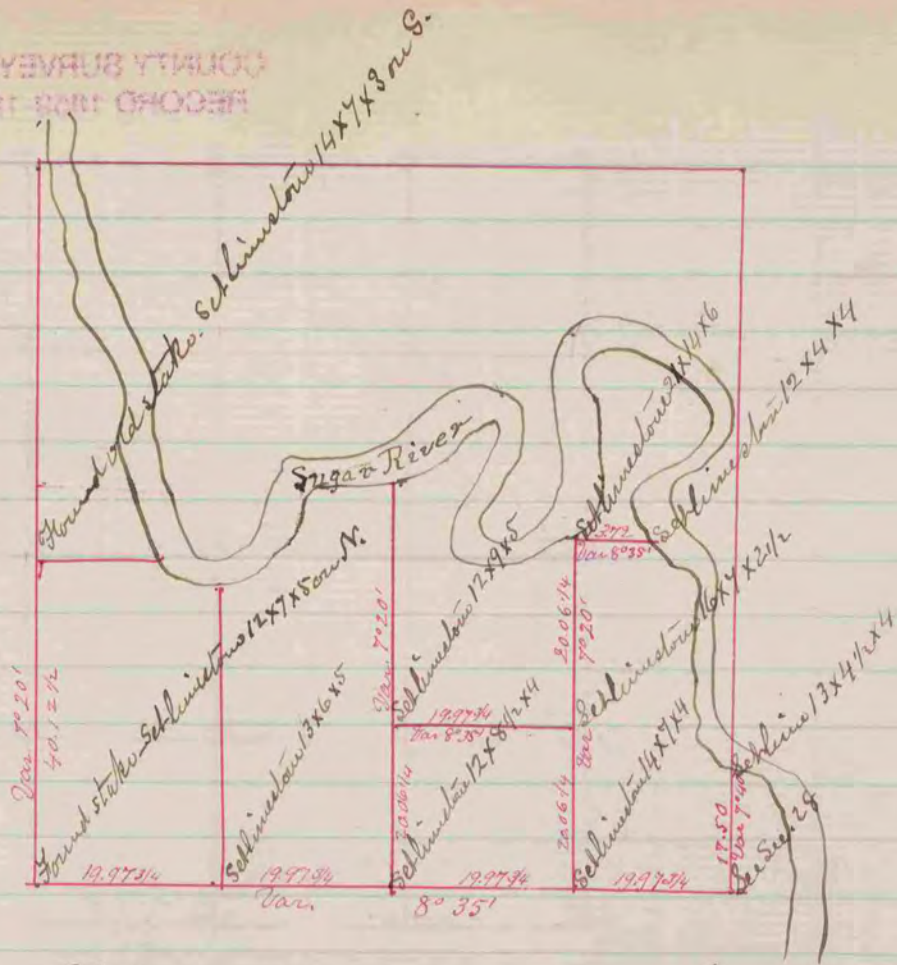


RECORD 1859-1906  
COUNTY SURVEYOR



A Record & Plat of a survey made on Sec. 20.  
Dec. 7. 1864. Avon. by S. D. Locke Co. Surveyor

N. B. Ranch E. line the same course as the W. line of Sec. 28. that  
being probably the way it was run by the Government  
Surveyor. Ranch interior N. & S. E. & W. lines the same course  
respectively as the West & S. lines, the only known  
line in the fractional Sec. — S. D. Locke.

COUNTY SURVEYOR  
RECORD 1859-1906