

Set line 20x10x7 set south & line  
on S. line block on N. side

Sec. 25  
Set line stone 15x9x8  
Set line stone on W. & sand stone  
on E. side  
Set line stone 14x8x4  
Set h. h. on N. & S. side

Set h. h. 8x5x4 + set  
line stone on N. & S. sides

Set h. h. 13x9x8

Set line stone 10x6x5

Set h. h. 8x6x4

Set h. h. 17x10x9

Set h. h. 17x9x8

Set h. h. 18x9x5

Set h. h. 15x8x9

Set line stone 15x8x4

Set line stone 18x6x4

Set line stone 15x5x6

Set h. h. 17x9x8

Set line stone 14x6x2

Set h. h. 16x9x6

Set h. h. 16x8x6

Set h. h. 15x5x6

Set h. h. 15x8x5

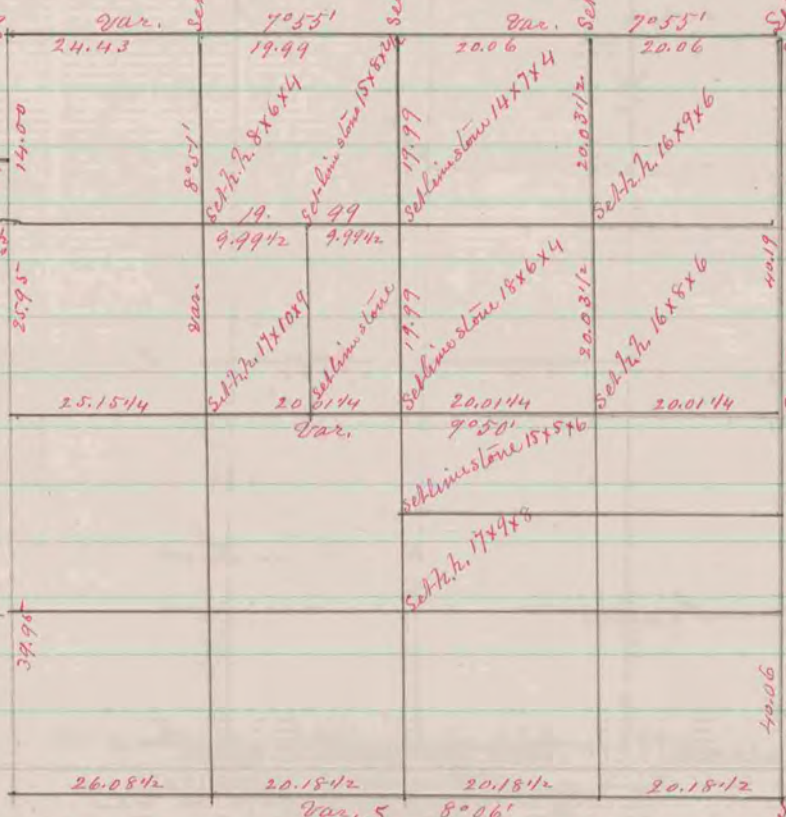
Set line stone 18x9x6  
9500 rounded it - with small  
lines to line

Set h. h. 17x13x7

Set line stone 16x6x6

Set line stone 18x13x5

Set h. h. stone 15x8x5



A Record & Plat of a survey made on Sec. 30  
T. 4 N. R. E. Nov. 7 & 8<sup>th</sup> 1860 by Edward Ruge  
Union Co. Surveyor