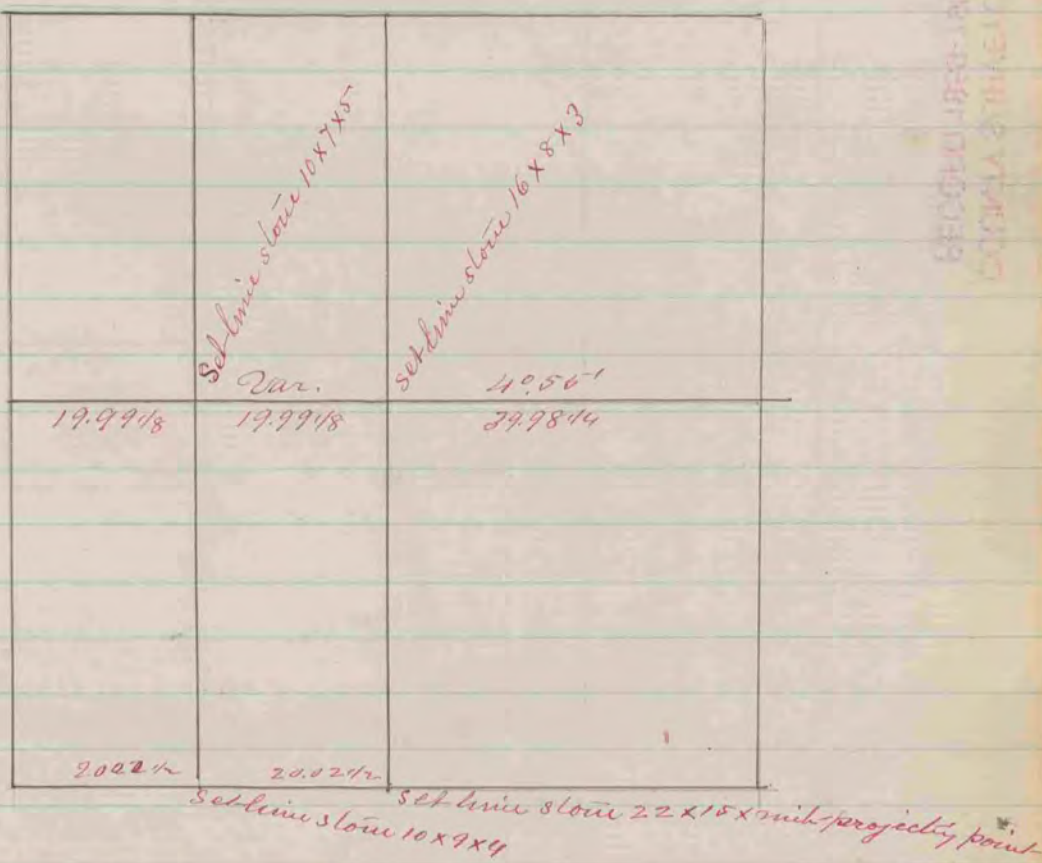


A Record & Plat of a survey made on Sec. 2 T 2  
R 13 Oct. 9<sup>th</sup> 1860 by Edward Ruger  
La Prairie Co. Surveyor

The corners on west line of Sec. 2 are the same  
as the East of Sec. 3 over leaf.



A Record & Plat of a Survey made on Sec. 2 T 2 R 13  
Oct. 10, 1860 by Edward Ruger Co. Surveyor  
La Prairie