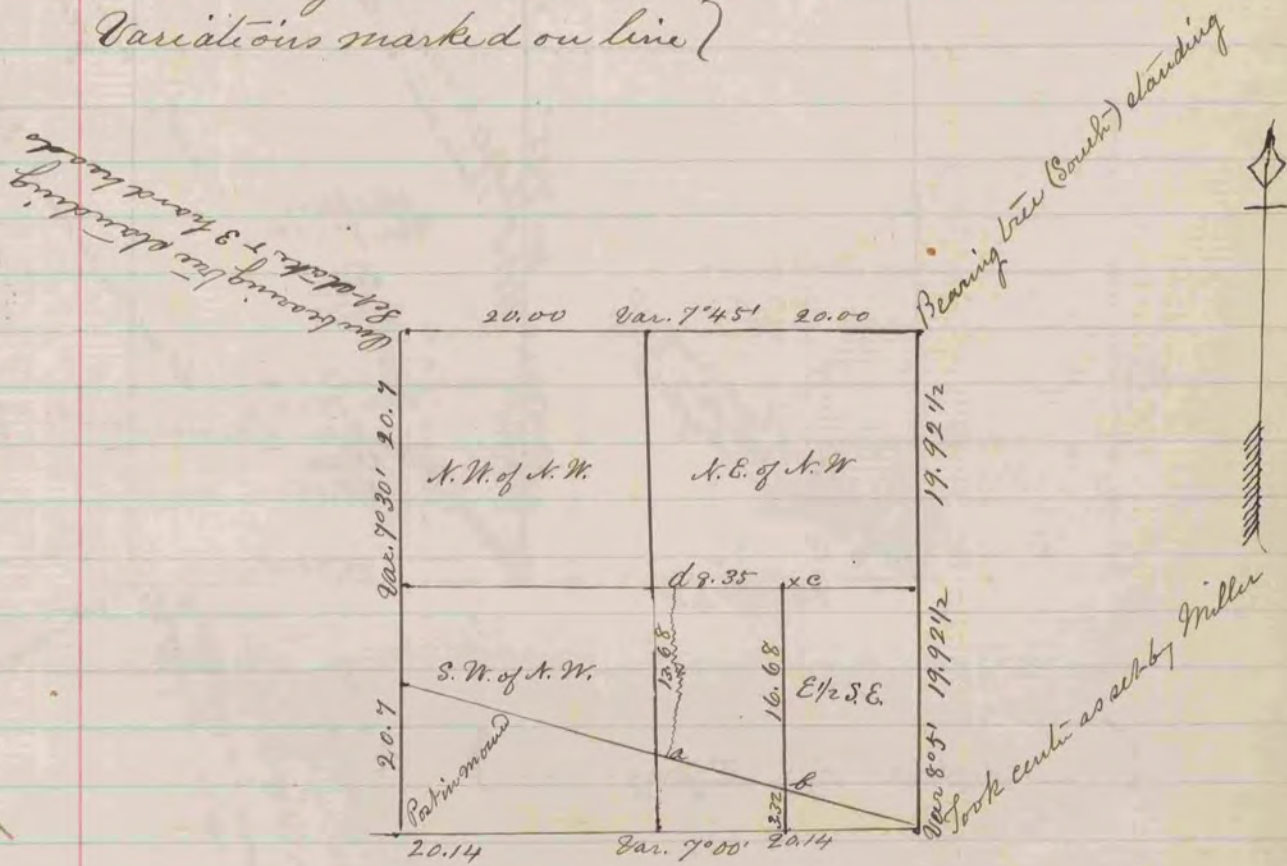


(Recorded in Vol I page 177)

Record and Plat of a Survey made on Sec. 26. T. 3.  
R. 12. E. by Sylvanus H. Locke  
County Surveyor for Rock Co. Mis.

Distances given in chains }  
Variations marked on line }



At 'a' set stake & 3 stones

- " 'b' " " "
- " 'c' " " "
- " 'd' " " "

COUNTY SURVEYOR  
RECORD 1859-1906