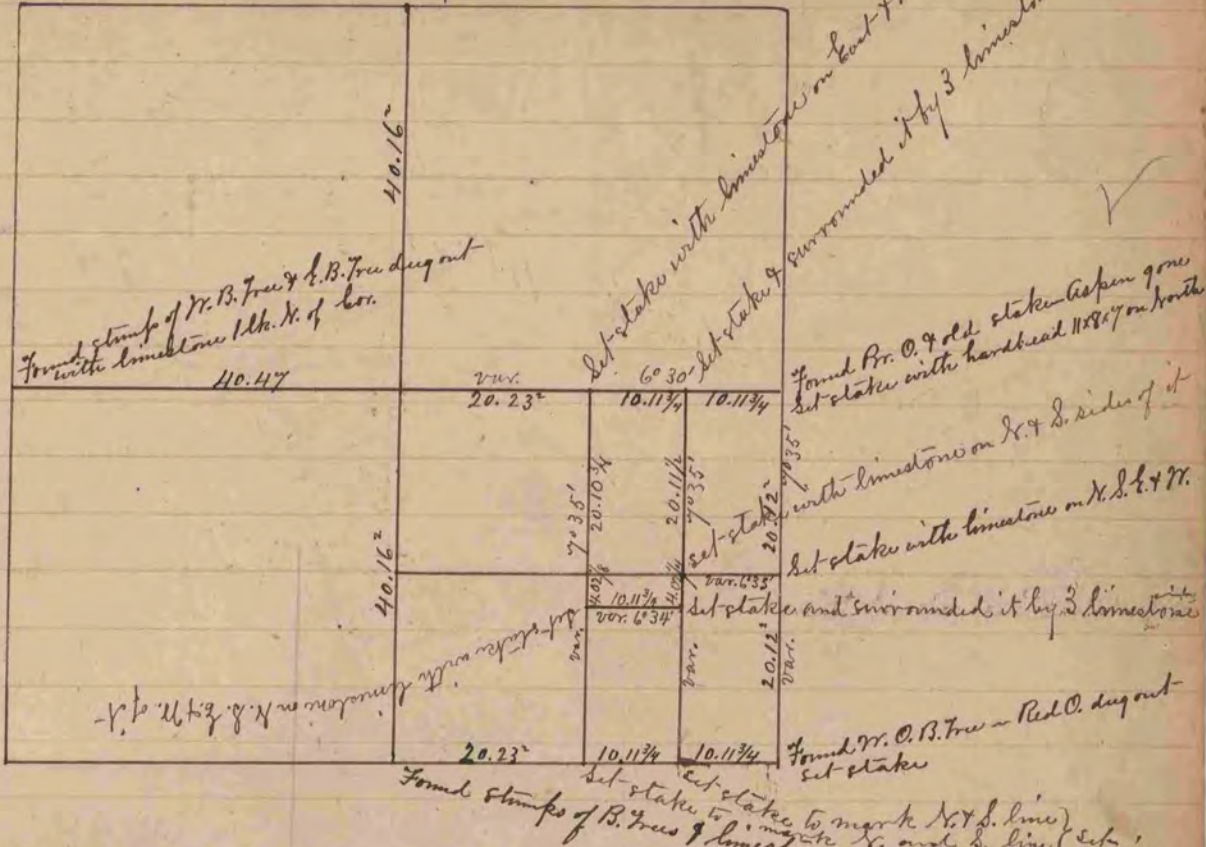
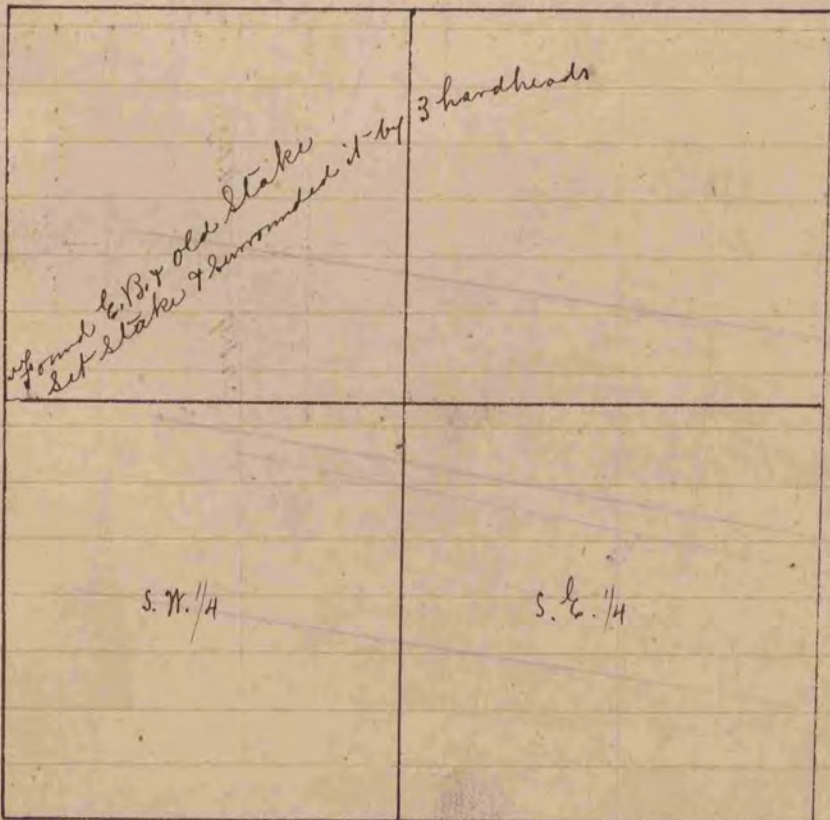


Found stumps of B. trees
Dist. bet. B. trees & lks. too much - Divided across 9 set stakes



The above is a correct Record & Plat of a Survey made
by me Dec. 8 & 9 - 1865 on Sec. 26, Plymouth -
S. D. Locke Co. Survs. Rock Co. Mo.



The above is a correct Record & Plat of a Survey
made by me April - 1866, on Sec. 4, Harmony
S. D. Locke
Co. Survs. Rock Co. Mo.