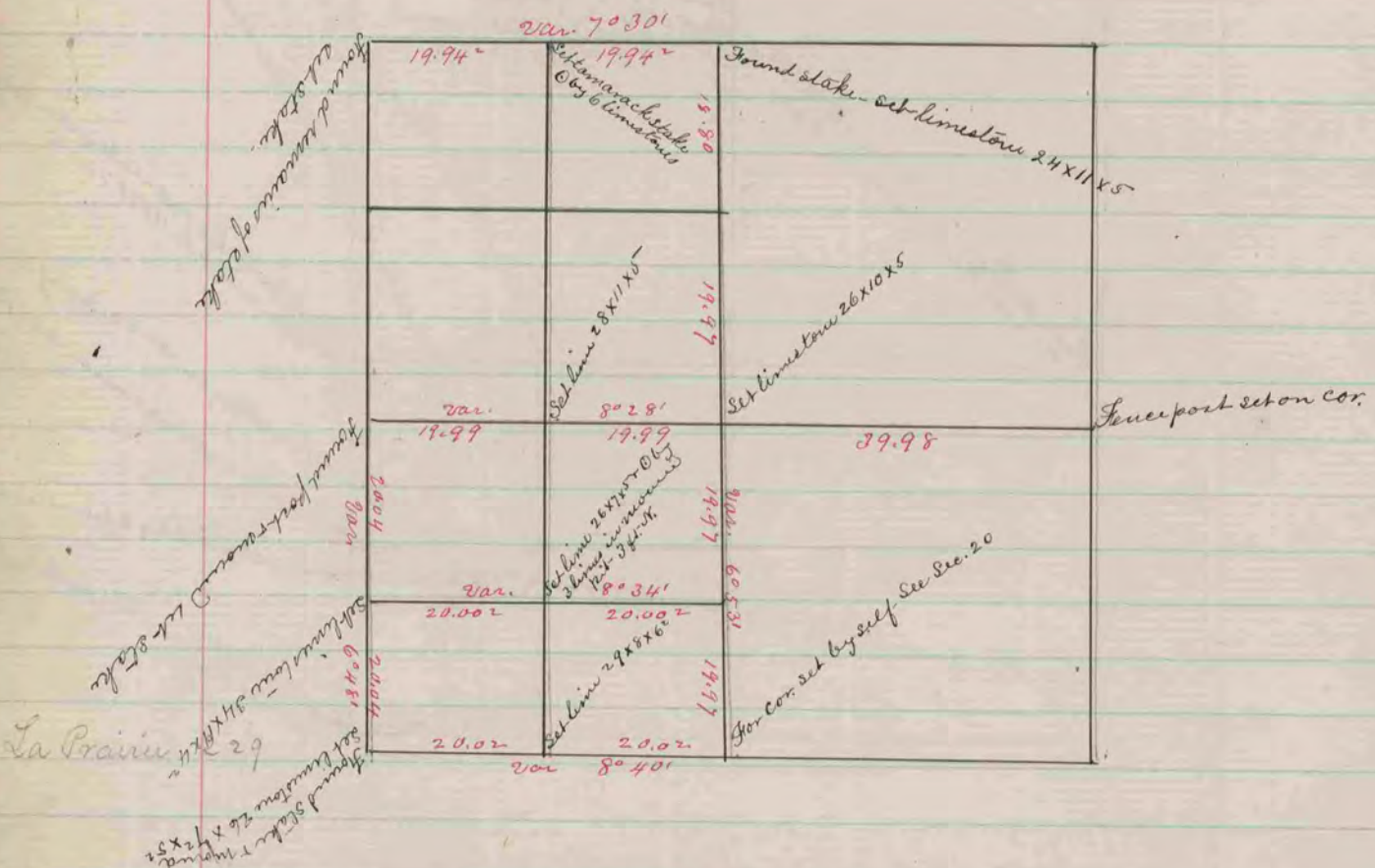


Harmany 226

The above is a correct Record & Plat of a survey made by me April 1866 on Sec. 4 Harmany
S. W. Locke Co. Surveyor



The above is a correct Record & Plat of a survey made by me May 12 - 1866 on Sec. 19 La Prairie
S. W. Locke Co. Surveyor

RECORD FOR FILE
COUNTY SURVEYOR
HARMONY 226