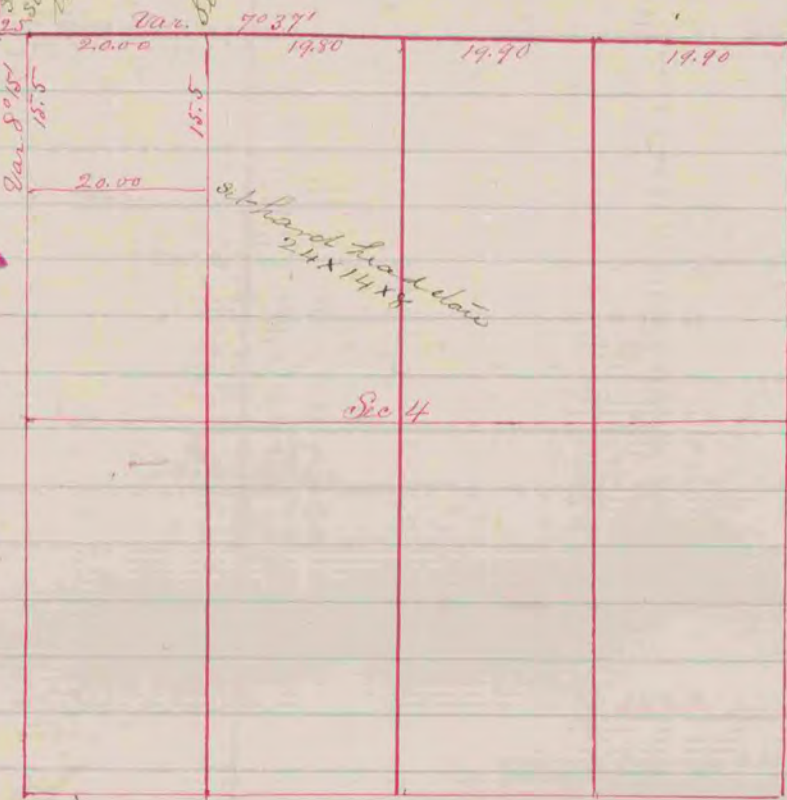


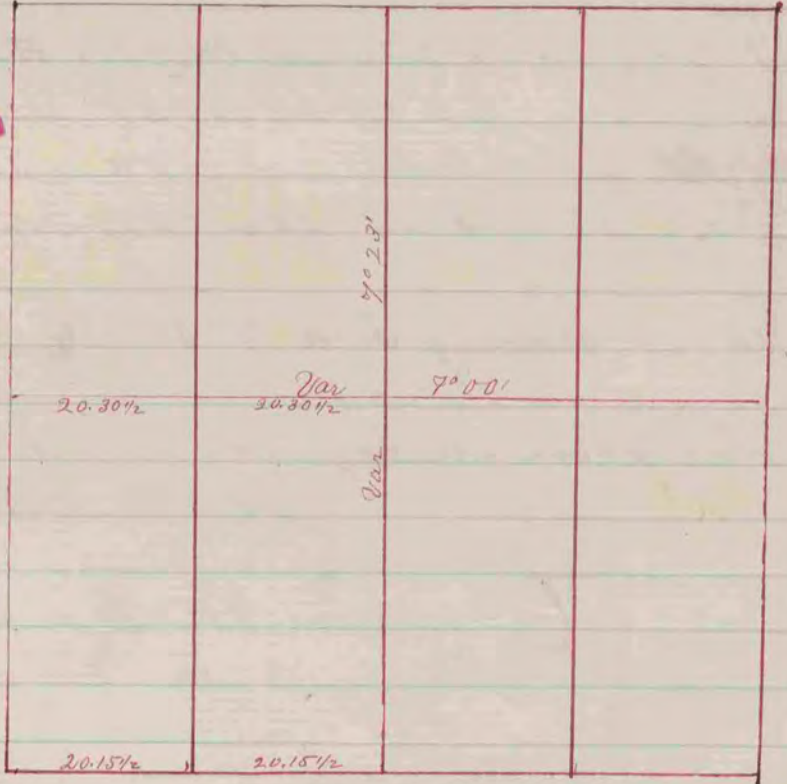
Surround d post with 3 lines
Jones post bearing stones
line stone S 24° 45' 48" W 111' 11"
" " N 7° 2' 1" W 50'



(Recorded in Vol I page 126)

The above is a Record & Plat of a survey made on Sec. 4 T. 2 N Range 12 E. Rock by Edward Rugee Co. Surveyor

(Recorded in Vol I page 128)



A Record & Plat of a Survey made on Sec. 17 T. 2 N. R. 12 March 24 1860. by Edward Rugee Co Surveyor Rock