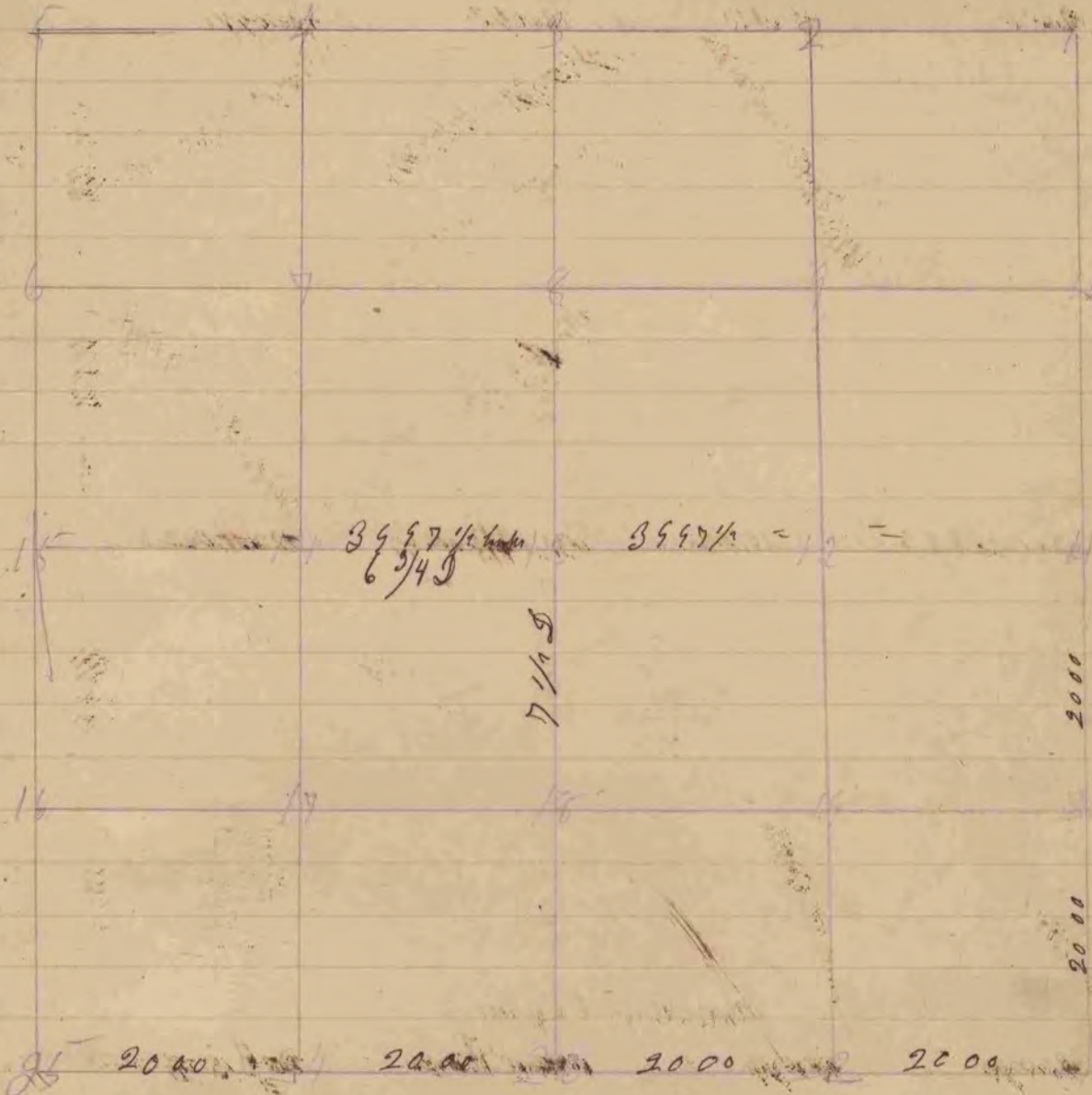


A Record and plat made ~~of~~ <sup>three</sup> town two Range Eleven  
East

Plymouth



- 22 - Sap wood four inches N 66 E 15 links
- Black Walnut four inches N 20 E 81
- = 20 Stone 20 by 4 inches thick
- 11 Stone 18 inch long 4 inch thick Locust 4 S 5 W 90 5/8 links
- Yellow Oak 16 N 13 W 5 4/3

The above survey was made on the 29th Day of May  
1855 Joseph Church County Surveyor