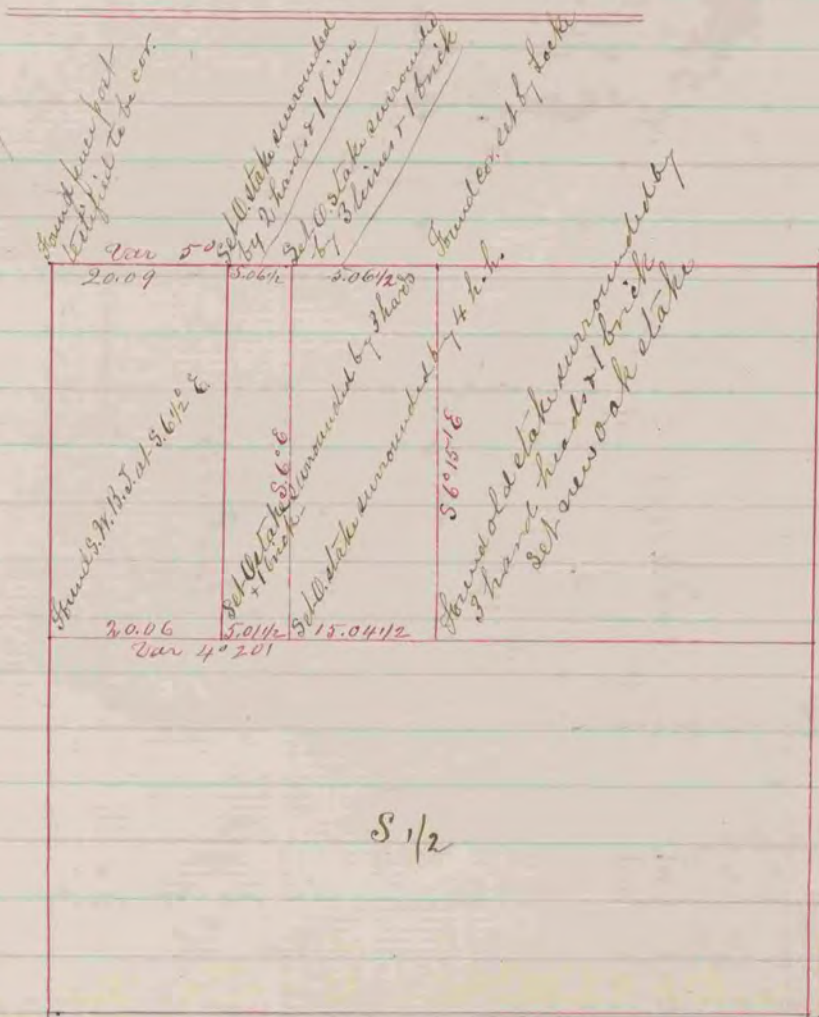


Survey on Sec. 29, T. 1, N. R. 13, E. Turtle
 June 10 1859 by E. J. Hobart Dep. Co. Surveyor
 Var 5° 30'



Above is a correct Record & Plat of a survey made by me, Sep. 3, 1865
 on Sec. 15, T. 1, R. 13, Turtle
 R. H. Lee Dep. Co. Surveyor