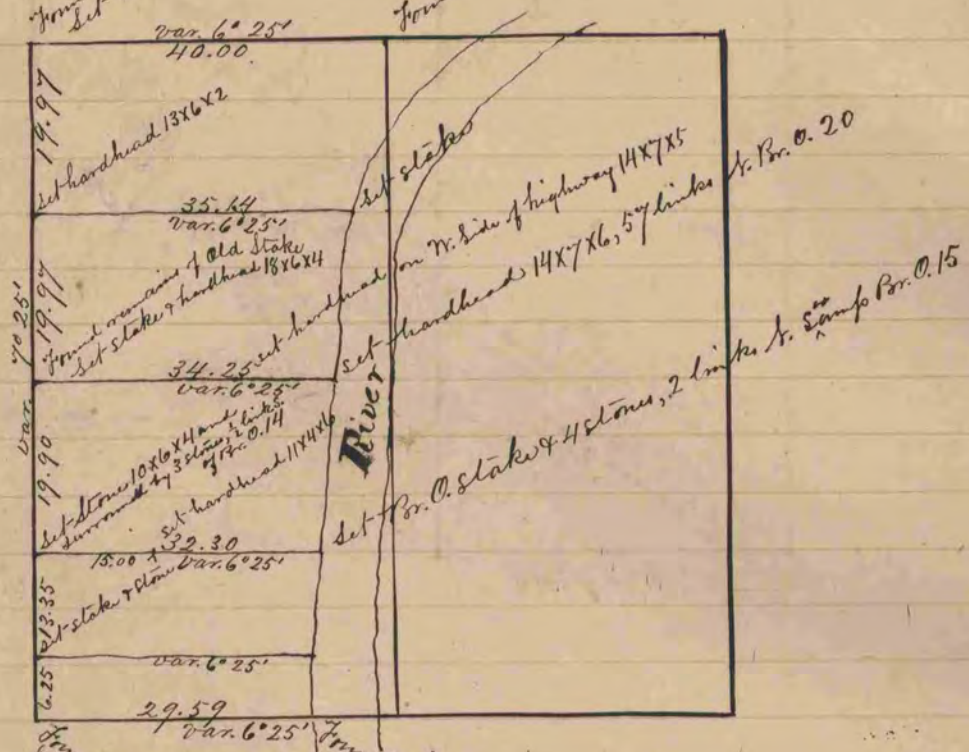


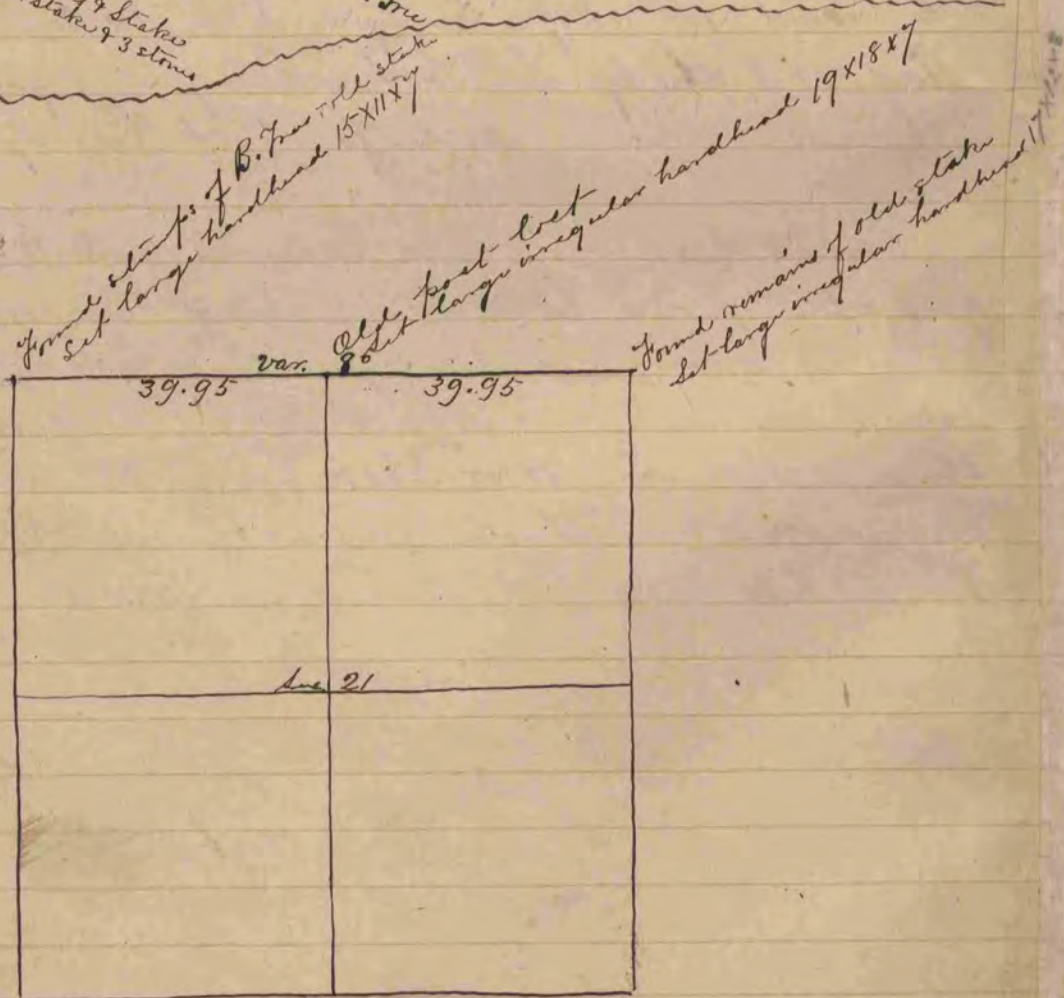
195

A record & Plat of a Survey made 1863 on Sec. 10 & 2
N. R. 12 E.
S. D. Locke County Surveyor

Rock



COUNTY SURVEYOR
RECORD 1 1851-1869



Record & Plat of a Survey made Nov. 6, 1863, on Secs 21
& 4 N. R. 11 E.
by S. D. Locke County Surveyor.