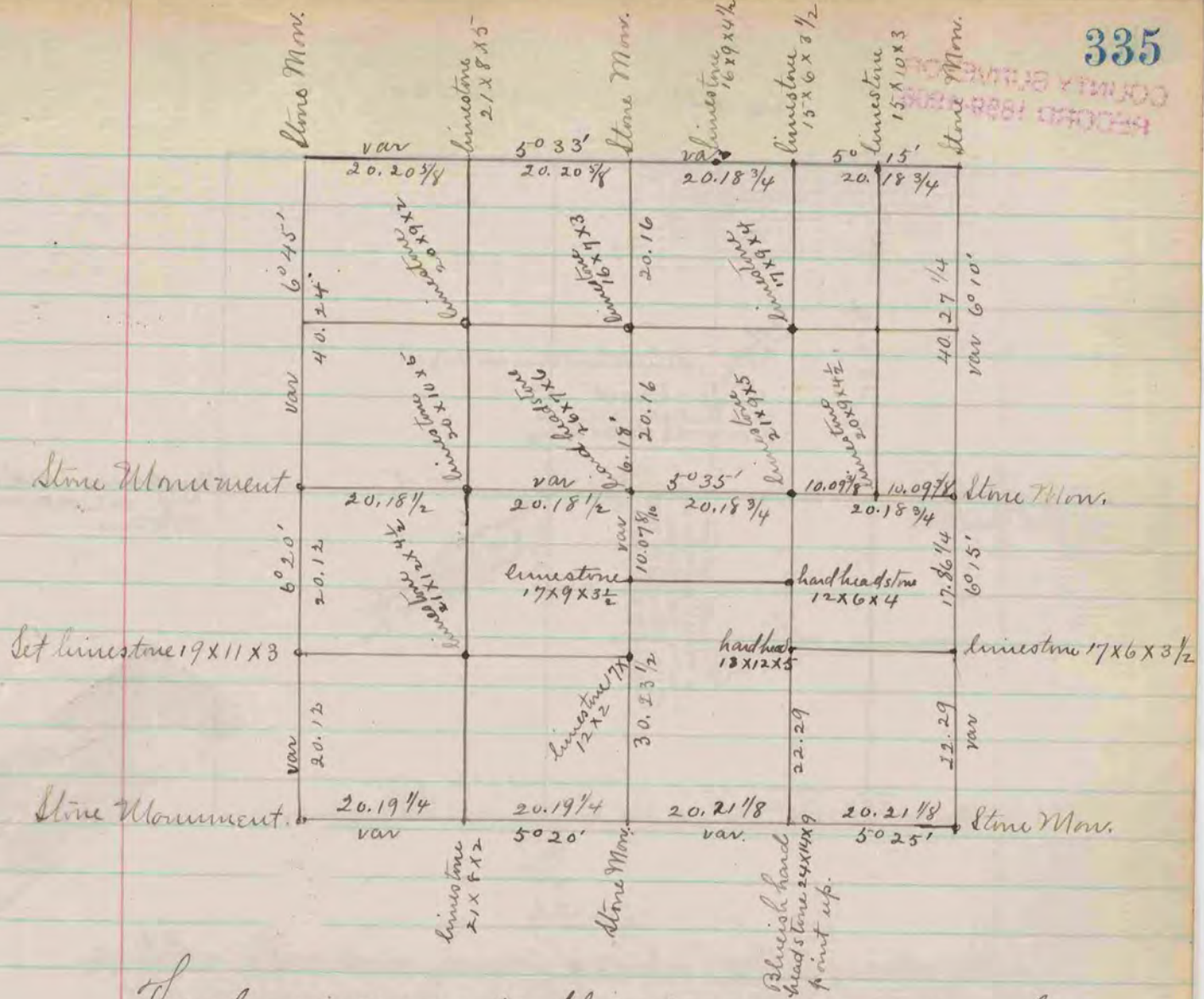


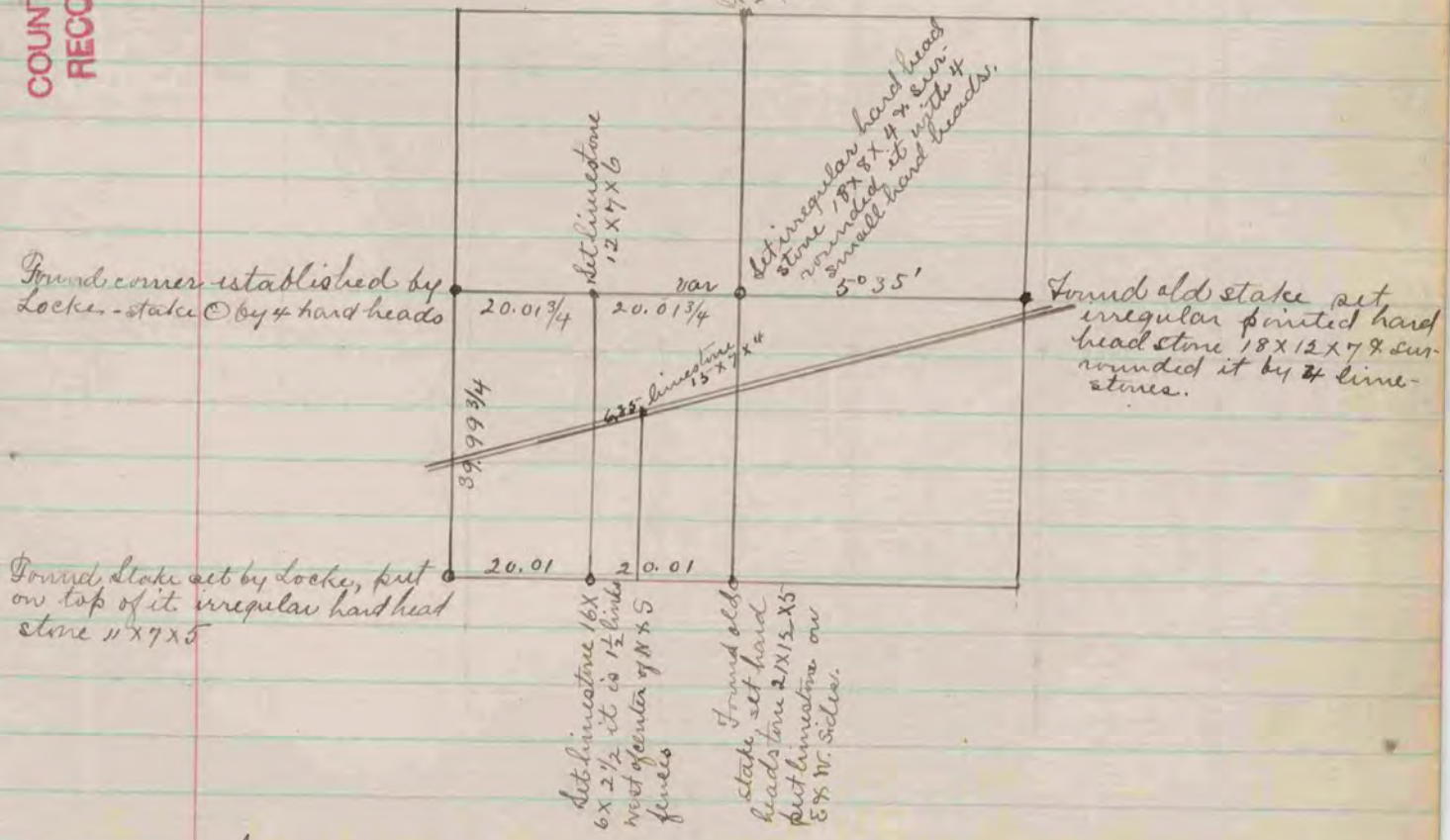
PLYMOUTH COUNTY SURVEYOR  
RECORD 1859-1906



The above is a record & plat of a survey made on Sec. 33  
Plymouth, Oct 9, 10, & 11-1871 by Edward Ruggs, Co Surveyor.

COUNTY SURVEYOR  
RECORD 1859-1906

Found corner established  
ed by self stake sur-  
rounded by stones  
See Sec 35 Bradford  
Book "A"



The above is a record & plat of a survey in Sec. 2 Clinton  
made October 12-1871. by Edward Ruggs  
County Surveyor.