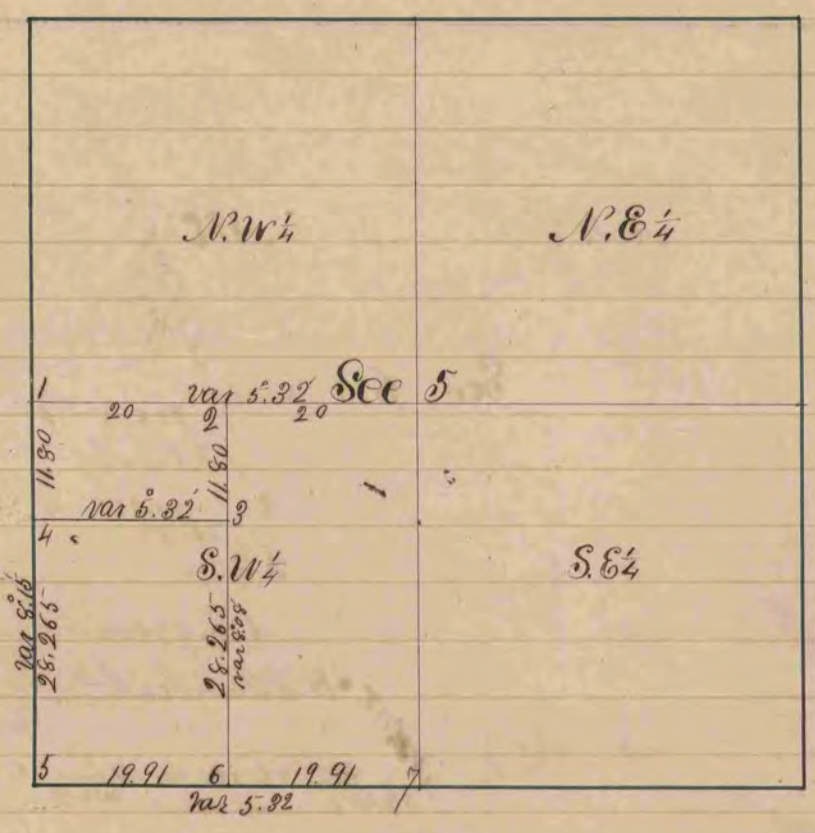


A Record + Plat of a Survey of Sec No 5. Township N^o 3 Range N^o 18
 for J. B. Crosby + H. Dillenbeck - Surveyed Feb 3rd 1859 by
 Edward Ruger

Distances given in chains }
 Variations marked on the lines }

County Surveyor of
 Rock County
 Harmony Wis



- Fig 1 too new witness trees
 " " Burr Oak 14 S 13^o 20' E 29¹/₂
 " " " " 8 S 45^o 45' W 62
 " 2 " " 13 S 15^o E 75
 " " " " 16 S 14^o 40' W 77
 " 3 " " Stump 14 feet high 16 S 6^o 7' W 139
 " " " " 15 S 42^o 30' E 212 var 808
 " 4 White Oak 14 N 23^o 35' E 43
 " " " " 14 S 60^o 15' E 85¹/₂
 " 5 Burr Oak 14 N 50 E 4
 " " " " 10 N 40 W 14
 " 6 " " 10 N 3^o 25' E 32¹/₂
 " " White Oak 9 N 70^o 50' W 64¹/₂
 " 7 Old witness trees gone took new ones
 " " Black Oak 12 S 84^o 10' W 25
 " " " " 15 S 29^o 40' W 50