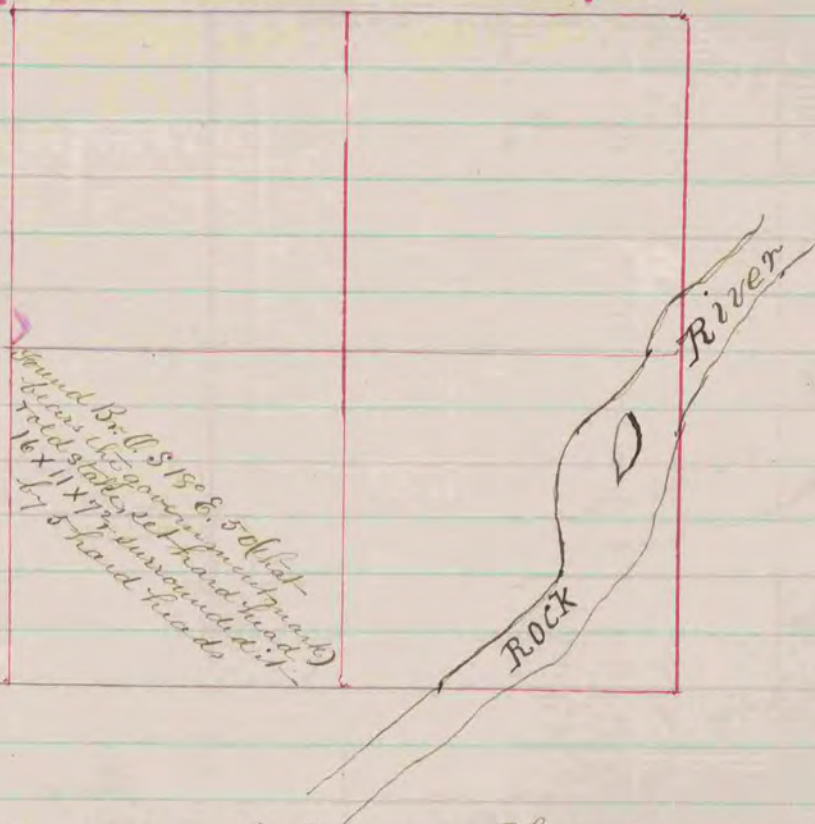


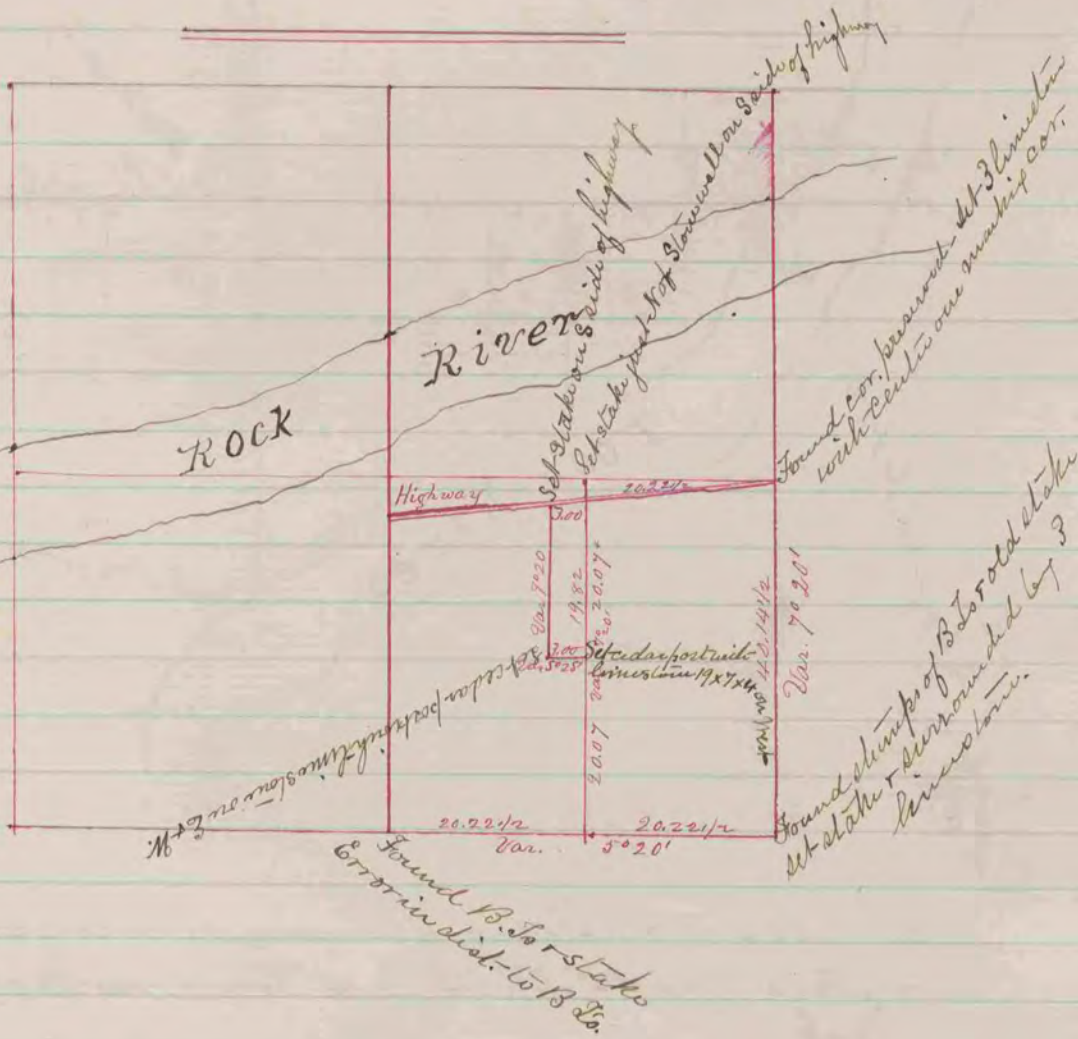
(Recorded in Vol I page 241)



The above is a correct Record & Plat of a survey made by me in September 1865 on Sec. 3 in the Town of Rock

S. D. Locke Co Surveyor

(Recorded in Vol I page 246)



The above is a correct Record & Plat of a survey made by me Oct. 27, 1865 Sec. 2 Town of Rock

S. D. Locke Co. Surveyor

NOT RECORDED
COUNTY SURVEYOR
RECORD 1859-1906