

A Record & Plat of a Survey made on Sec. 20, T. 12, R. 12, for
 Dexter Farr & J. Chaubelain - Surveyed March 7 & 8 by Edward
 Ruge, County Surveyor. Distances given in chs.
 Var: marked or lines

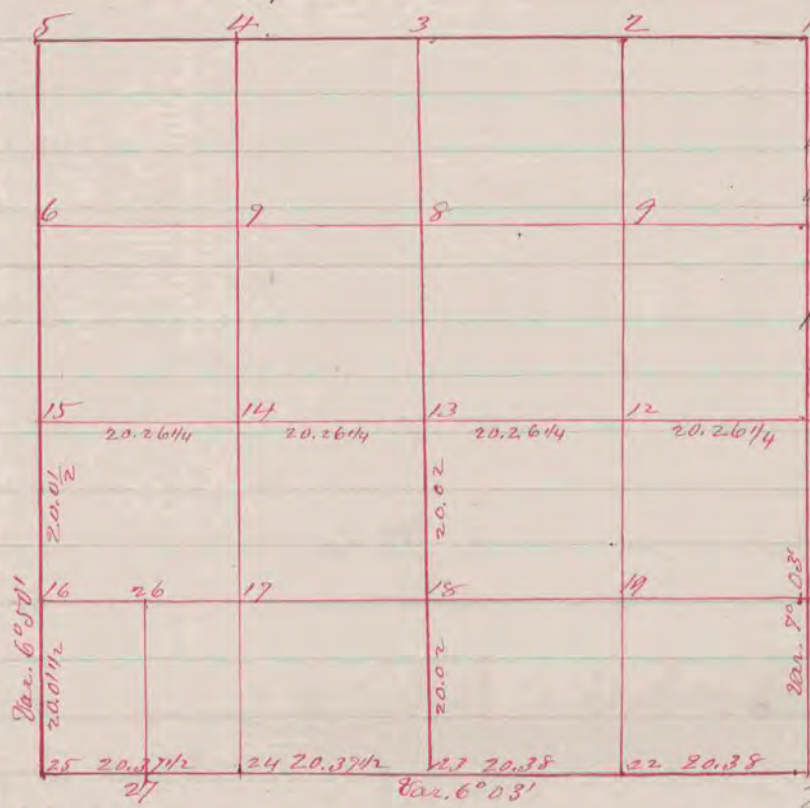


Fig. 23 continued
 B.C. 7 S 62° 05' W 97
 B.C. 2 N. 37° 55' W 62
 At Fig. 25 surrounded
 post by 4 hard heads
 Bl. O. 6 N 12° 58' W 114 1/2
 Burr O 1 1/2 N 76° 07' W 58 1/4
 " " 5 N 89° 45' W 145 2/3
 Fig. 27 took witness trees
 20 surrounded post by
 4 hard heads
 Aspen 4 N. 13° 30' E 74 1/3
 Bl. O. 2 N. 38° 32' E 71 2/4
 Fig. 26 surrounded post
 by 3 hard head stones, took
 W. J. Burr Oak 3 S 82° 02' E 15 1/2
 Wild cherry 6 N. 57° 45' W 43 1/4

(Recorded in Vol I page 95)

- At Fig. 3 surrounded 1/4 post by 3 hard head stones
- " " 11 " " " 4 lime stones
- " " 13 " " " 3 hard heads & 1 lime stone
- " " 15 " " " 3 " "
- " " " took new witness trees
- " " " Burr Oak 9 N. 35° 26' E 170
- " " " " " 6 N. 60° 04' W 174 1/4
- " " " Black " 9 S. 1° 57' W 151
- " " 18 surrounded 1/8 post by 4 hard heads
- " " " Burr Oak 6 N. 6° 52' E 173 1/2
- " " " " " 8 S 28° 05' E. 154
- " " " " " 8 S. 10° 37' E 173 1/2
- " " 20 surrounded post by 3 hard heads
- " " " Burr Oak 2 S 7° 03' W 54 1/2
- " " " " " 8 N 2° 18' W 144 2/3
- " " 21 surrounded post by 4 lime stones
- " " " Burr Oak 10 S 35° 50' E 196
- " " " Black " 5 S 50° 43' W 155 1/3
- " " " Hickory 2 N 64° 31' W 171 1/3
- " " 23 surrounded post by 3 hard heads
- " " " Black Oak 6 S 49° 50' W 55 1/4 Var 6° 55'

COUNTY SURVEYOR
 RECORD 1859-1906