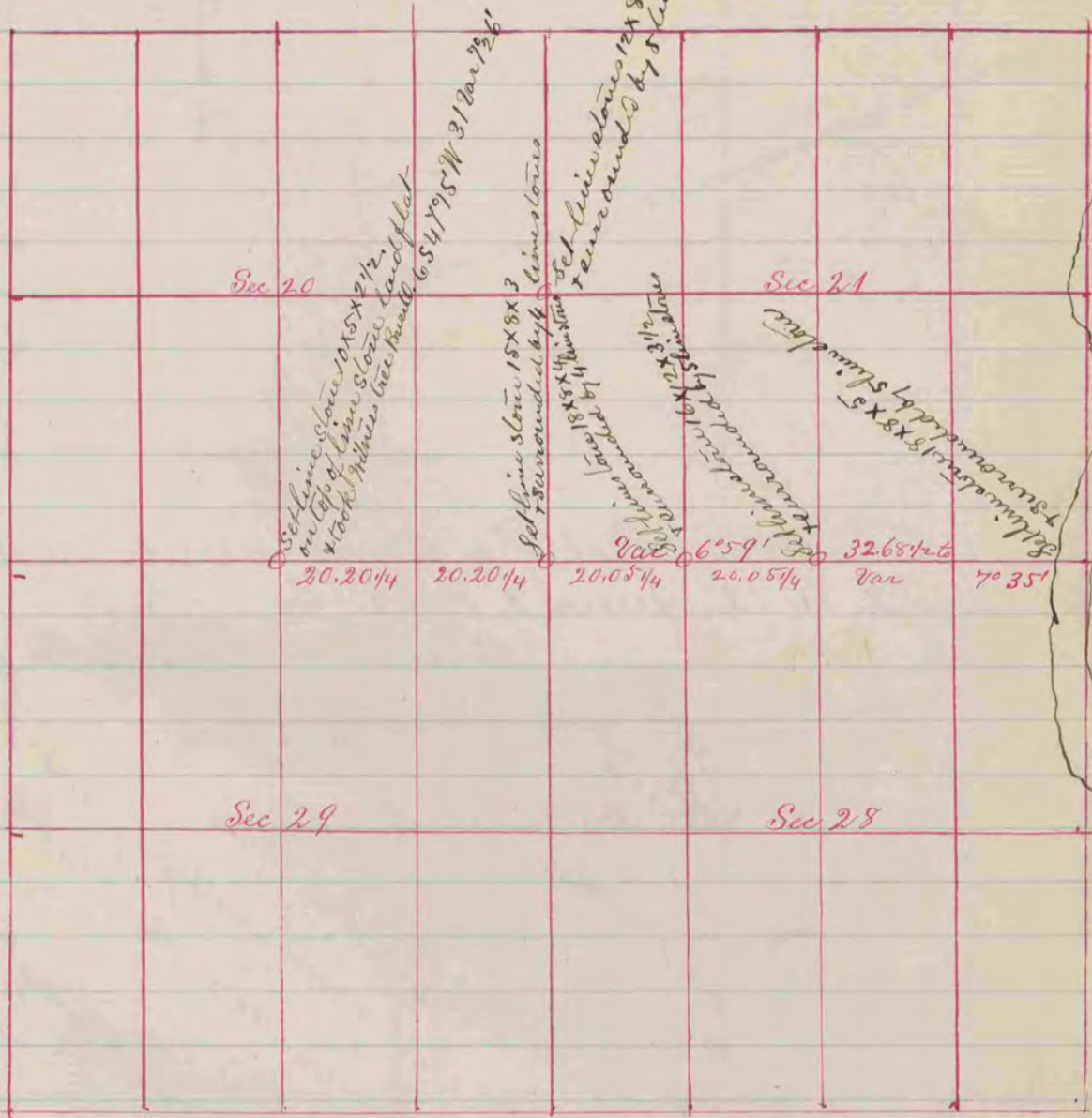


COUNTY SURVEYOR  
RECORD 1859-1906

(Recorded in Vol I page 137)



A Record & Plat of a Survey on Secs. 20-21-28-29  
T2, R12, Sep. 14-1860

The cor. of Secs. 20-21-28 & 29 being gone it  
was put in from the four adjacent  
quarter posts

Edward Huger Co. Surveyor

Rock