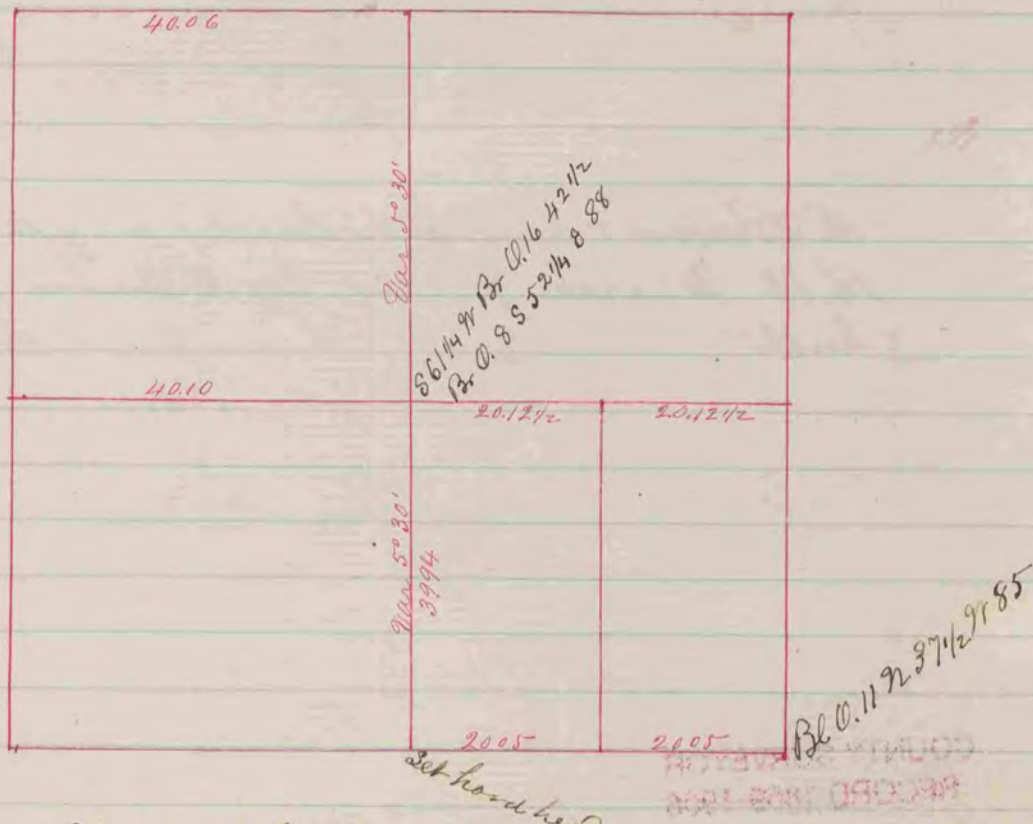


A Record & Plat of a survey made on Sec. 3, T.1, R.13 March 17 1861 by
 Tuttle Edward Rogers Co. Surveyor



Record & Plat of a Survey made on Sec 36, T.1, R.13 Tuttle
 March 25 - 1861 by
 Tuttle E. J. Hobart def. Co. Surveyor