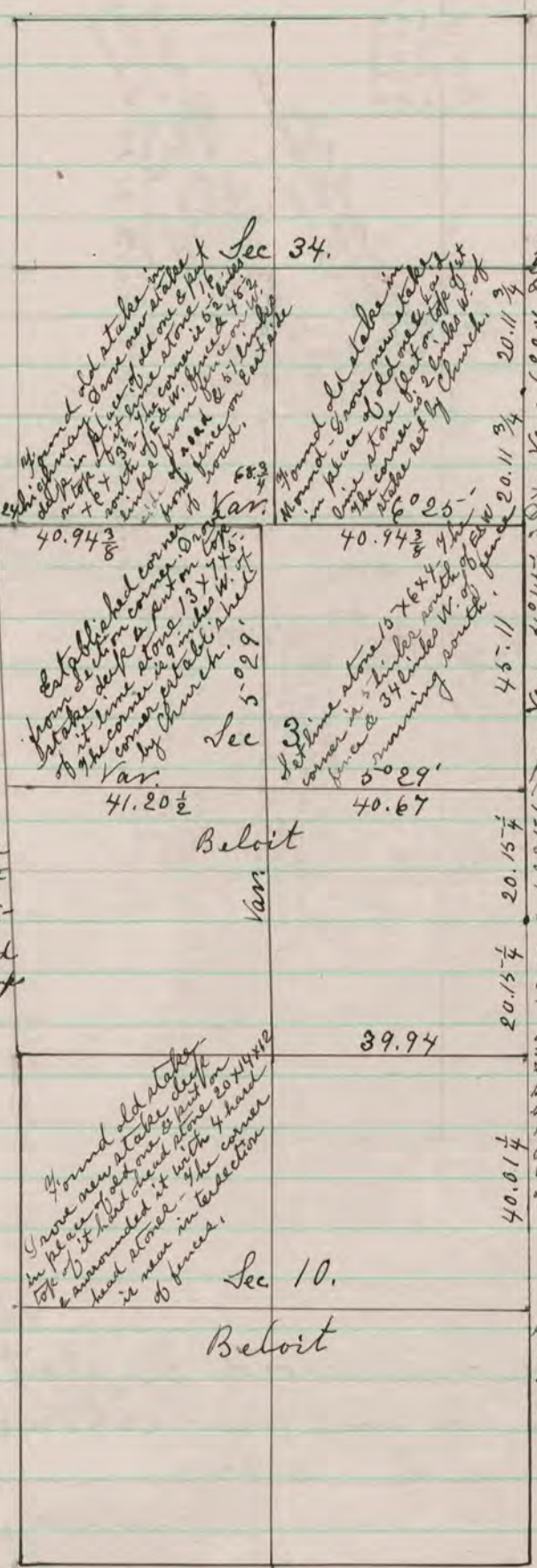


Rock River 26



Found old stake -
Grove new stake in
place of old one & put
on top of it lime stone
10x6x 1/2 - The corner is
10 1/2 links south of
E. & W. fence & 4 1/2 links
south of corner at
S. W. corner of Sec
34 Rock.

Found old stake &
where stumps of B. Y.
had been dug up -
Grove new stake
deep in place of old
one & put on top of it
lime stone 20x6x1 1/2
also put hard head
stones in the ground
where the B. Y. stumps
had been dug up.

Found old stake in
place of old one & put
on top of it lime stone
10x6x 1/2 - The corner is
10 1/2 links south of
E. & W. fence & 4 1/2 links
south of corner at
S. W. corner of Sec
34 Rock.

Found old stake in
place of old one & put
on top of it lime stone
10x6x 1/2 - The corner is
10 1/2 links south of
E. & W. fence & 4 1/2 links
south of corner at
S. W. corner of Sec
34 Rock.

Found old stake in
place of old one & put
on top of it lime stone
10x6x 1/2 - The corner is
10 1/2 links south of
E. & W. fence & 4 1/2 links
south of corner at
S. W. corner of Sec
34 Rock.

Found old stake in
place of old one & put
on top of it lime stone
10x6x 1/2 - The corner is
10 1/2 links south of
E. & W. fence & 4 1/2 links
south of corner at
S. W. corner of Sec
34 Rock.

Found lime stone at corner. The corner is
50 links from fence on west side of road
& in line with fence running west.

Found stake set by church correct.

Found old stake & lime stone at corner.
Grove new stake in place of old one & put
on top of it lime stone 22x7 1/2 x6. The corner
is 43 links south of row of soft maple
trees on North side of road running East
& 47 links North of fence on South side
of road running East & 41 1/2 links West
of fence on East side of N. & S. road & 61
links East of row of poplar trees on West
side of N. & S. road.

Found lime & old stake - Grove new stake in
place of old one & put on top of it lime stone
17x8x2 1/2 - Also set lime stone 50 links west
from the corner it is 43 1/2 links to fence
on East side of road & 56 1/2 links to fence on
West side of road - The corner is nearly
in line of fence running west.

Set lime stone 15x6x2 1/2 at corner, also set
lime stone 50 links west - From the corner
it is 47 1/2 links to fence on East of road &
& 50 links to fence on West of road - The
corner is in line of fence running East.

Found old stake - Grove new stake deep
in place of old one & put on top of it lime
stone 16x11x1 1/2 - laid flat on top of stake - also
set lime stone 50 links West for West line of
road - From the corner it is 39 links to fence
on East side of road & 63 1/2 links to fence on
West side of road - The corner is in line
of E. & W. fences.

Found fence post on corner - Also found
stumps of B. Y. N. W. B. Y. I should read
39 instead of 29 links - Set lime stone
18x10x2 1/2 close to post on East side
The corner is in line of fence running
East.

The above is a plat & record of a Survey made
by me on Sections 3 & 10 Beloit & Section 34
Rock. June 18 & 19 - 1874
Edward Ruger
County Surveyor,