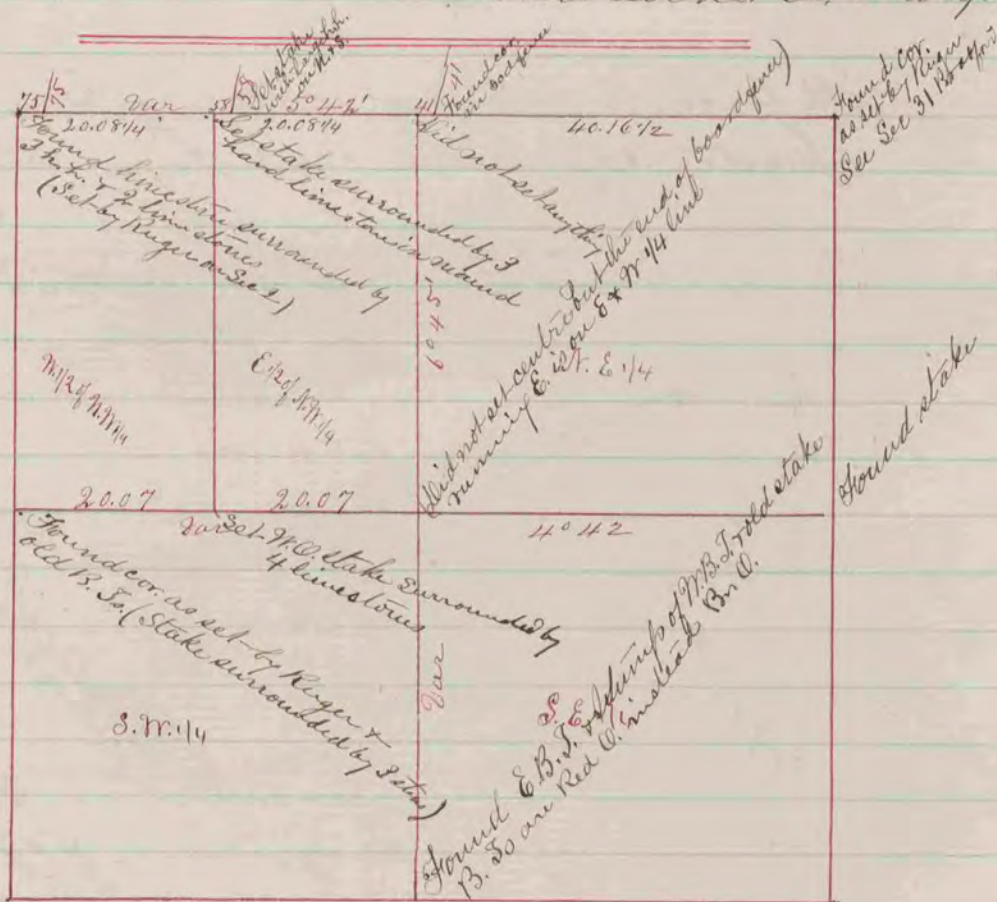


The above is a correct Record & Plat of a  
 Survey made by me April 11, 1867, on Sec. 24 Tenth  
 S. H. Locke, Co. Surveyor



The above is a correct Record & Plat of a  
 Survey made by me Oct. 10, 1867, on Sec. 1 Tenth  
 S. H. Locke, Co. Surveyor