

U.S. PUBLIC LAND SURVEY MONUMENT RECORD

For Public Land Survey Corners in:

WI ADMINISTRATIVE CODE A-E 7.08 REQUIREMENT

T. 9 N., R. 14 E

CORNER CODE INDEX

A	1	2	3	4	5	6	7	8	9	10	11	12	13	14	15	16	17	18	19	20	21	22	23	24	25
B																									
C	6																								
D																									
E																									
F																									
G	7																								
H		8																							
J																									
K																									
L	18																								
M		17																							
N																									
O																									
P	19																								
Q		20																							
R																									
S																									
T	30																								
U		29																							
V																									
W																									
X	31																								
Y		32																							
Z																									

KOSHKONONG TWP

ROCK COUNTY WI

IF AVAILABLE
ROCK COUNTY COORDINATES PREFERRED

North _____ Elev. _____

East _____

Hor. Datum _____ Vert. Datum _____

LATITUDE _____ ELLIPS. HT. _____

LONGITUDE _____

GPS (X) _____ TRAVERSE (X) _____

BASED ON THE FOLLOWING CONTROL:

PLACE MONUMENT SYMBOL \blacklozenge AT PROPER LOCATION ON ABOVE INDEX

\blacklozenge CORNER MONUMENT

\circ WITNESS MONUMENT

(a)

THOMAS WOLLIN, JEFFERSON COUNTY SURVEYOR,
PROVIDED THE STATE PLANE COORDINATES FOR
CORNER CODE #7101 COR S $\frac{1}{4}$ SEC 31 T 9 N R 14 E

STATE PLANE COORDINATES N/S 310,197.412
NAD 1983/91 OF RECORD E/W 2,267,385.448

I DONALD BARNES CONVERTED THE ABOVE
COORDINATES TO THE FOLLOWING:

LATITUDE 42-50-44.19116
LONGITUDE 88-53-07.77988
MERIDIAN CONV. 0-45-56.8
SCALE FACTOR 0.9999792565

ROCK COUNTY COORDINATES (NAD 1983/91)

N/S 328,485.194
E/W 530,080.442
SCALE 0.9999988651

CONVERGENCE: THE ANGULAR DIFFERENCE
BETWEEN THE GEODETIC NORTH & THE ROCK
COUNTY MERCATOR NORTH

\oplus - DEG 0 MIN 07 SEC 37.1

Donald Barnes
2-12-03

BEARINGS ARE BASED ON:

FIELD BOOK _____ PAGE # _____

SHEET 1 OF 1

SHOW A PLAN VIEW DRAWING DEPICTING THE CORNER MONUMENT AND SURROUNDING PHYSICAL FEATURES, INCLUDING THE EXCAVATION AREA AND DEPTH.

PLANNING & ZONING COMMITTEE ADOPTED THE ABOVE FORM ON 12/2/1982

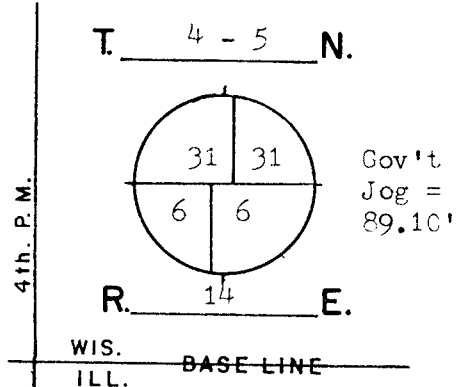
File in LIMA TWP
CORNER CODE A 3/4

GOVERNMENT LAND CORNER RECORD*

JEFFERSON COUNTY

CORNER NO. 7101

TYPE OF MONUMENT Aluminum Magnetized & Stone
 STATE PLANE COORDINATES N. 310197.412
 NAD 1983/91 E. 2267385.448 S $\frac{1}{4}$ -31
 ELEVATION M.S.L. DATUM: _____
 Grid-Ground 1.0000573844
 FIELD BOOK Koshkonong p. 45
 DRAWN BY TRW



BASIS FOR MONUMENTATION

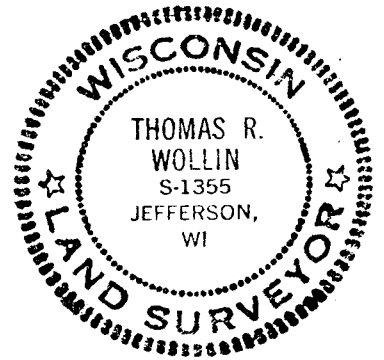
Original Survey, 1834-37, Wood Post & Bearing Trees Resurvey of Koshkonong Township, by Milo C. Jones, August-December, 1886. Field notes say that the wood stake was found and verified. From this evidence a Limestone monument, Approx. 6" by 36" long with a squared finished top, was set for the corner. Notes recorded in Register of Deeds, Miscellaneous Volume 1 pages 389-412.

1972, The stone monument was found about 3' below road surface. The top half of the stone was broken off and missing. Position of the stone was referenced with iron pipe and in 1974, an iron pipe was set over the stone.

1980, Removed the iron pipe and set an Aluminum Monument for the corner. The corner for N $\frac{1}{4}$ -6 was established by the Rock County Surveyor on a straight line between S $\frac{1}{4}$ -31 and SW-31.

3/12/2002, G.P.S. coordinates are assigned. A Topcon GP-SX1 single-frequency receiver was used.

SEAL:



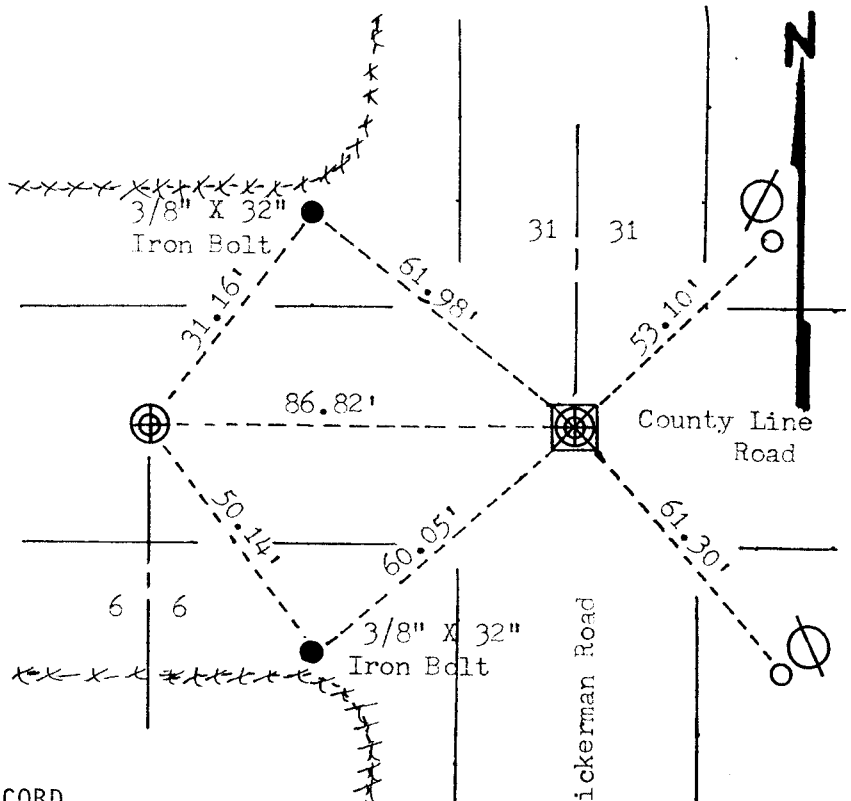
DATA SHOWN HERE ON CERTIFIED CORRECT:

Thomas R. Wollin
 REGISTERED LAND SURVEYOR

DATED 5/12/1982

LOCATION SKETCH

- SQUARE CUT LIMESTONE 6" by 18"
- CONCRETE / BRASS CAP
- ALUMINUM MAGNETIZED 4" by 30"
- IRON PIPE 1" by 24"
- RR SPIKE
- PK NAIL
- FENCE
- UTILITY POLE
- STEEL POST / SIGN



MAINTENANCE RECORD

DATE	INIT.	REMARKS

* U.S. PUBLIC LAND SURVEY MONUMENT RECORD