

# U.S. PUBLIC LAND SURVEY MONUMENT RECORD

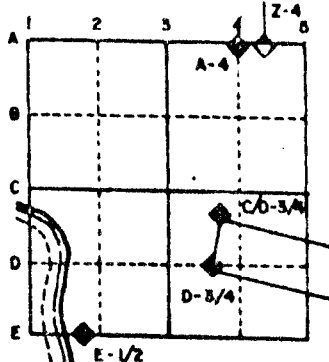
For Public Land Survey Corners in the  
T. 2 N., R. 12 E.

## CORNER CODE INDEX

	1	2	3	4	5	6	7	8	9	10	11	12	13	14	15	16	17	18	19	20	21	22	23	24	25
A																									
B																									
C	6																								
D		5																							
E			4																						
F				3																					
G					2																				
H																									
I																									
J	7																								
K		8																							
L			9																						
M				10																					
N					11																				
O						12																			
P	18																								
Q		17																							
R			16																						
S				15																					
T					14																				
U						13																			
V							12																		
W								11																	
X									10																
Y										9															
Z											8														

PLACE MONUMENT SYMBOL (◆) AT PROPER LOCATION ON ABOVE INDEX

### EXAMPLE



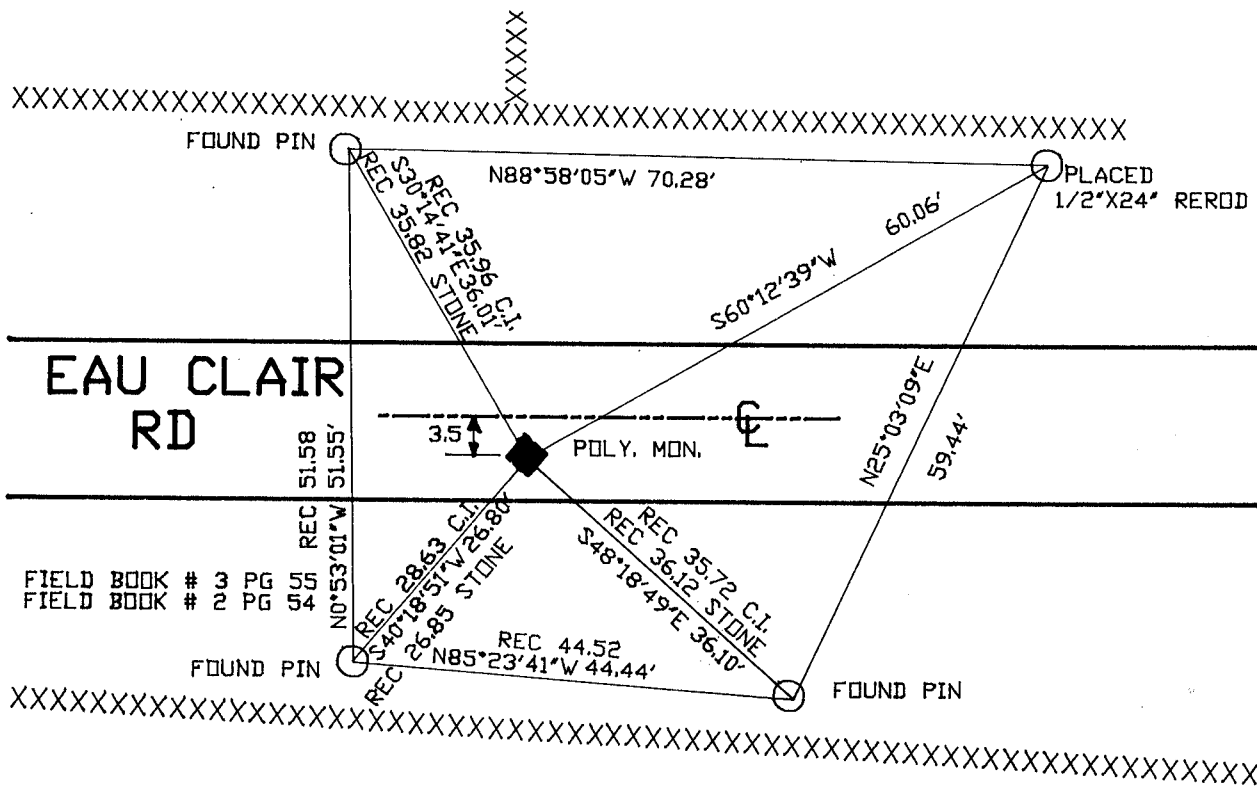
ROCK TWP  
ROCK COUNTY WI

IF AVAILABLE  
STATE PLANE COORDINATES

North (Y) \_\_\_\_\_ Eleve. (Z) \_\_\_\_\_  
 East (X) \_\_\_\_\_ Zone \_\_\_\_\_  
 Hor. Datum \_\_\_\_\_ Vert. Datum \_\_\_\_\_

◆ CORNER MONUMENT      ○ WITNESS MONUMENT

BEARINGS ARE BASED ON: ASSUMED



MICROFILMED  
SHEET \_\_\_ OF \_\_\_

CORNER CODE: R11

(B) Describe any record evidence, monument evidence, occupational evidence, testimonial evidence or any other material evidence you considered, and whether the monument was found or placed.

1834 HARRISON ORIGINAL GOVERNMENT SURVEYOR. FIELD NOTES - MEASURED 2656.5 TO SE AND SW CORNERS. SHOWS A DISTANCE OF 2161.5 TO THE MEANDER POST ON THE WEST SIDE OF THE RIVER.

1851 Mc VEAN VOL 1 PG 3 STATES NOTHING ABOUT CORNER. SHOWS THE FOLLOWING DISTANCES:

TO S 1/4 COR OF SEC 28 5278.02  
NE CORNER OF SEC 28 2679.60  
NW CORNER OF SEC 28 2645.94

1860 RUGER VOL 1 PG 137 PLACED LIMESTONE 16X12X3 1/2 & SURROUNDED BY 5 LIMESTONES. SHOWS A DISTANCE OF 2646.93 TO SW CORNER OF SECTION 21 AND 2169.09 TO MEANDER POST ON WEST SIDE OF RIVER ON SOUTH LINE OF SE 1/4 OF SECTION 21.

1973 LEE VOL 4 PG 592 PLACED CAST IRON MONUMENT AND REFERENCED WITH IRON PINS AFTER TRAVERSING SECTION TO ESTABLISH CORNER.

19?? SCHROEDER VOL 5 PG 64 SHOWS A DISTANCE OF 2179.55 TO MEANDER CORNER.

1978 BARNES VOL 5 PG 505. FOUND CARPENTERS NAIL, STONE OF RECORD, AND CAST IRON MONUMENT. SHOWS TIES TO BOTH. ALL THE FILED SURVEYS EXCEPT ONE USED THE CARPENTERS NAIL. REMOVED THE CAST IRON MONUMENT.

1986 BARNES VOL 5 PG 505 PLACED ALUMINUM MONUMENT ON TOP OF LIMESTONE.

FOUND BOTTOM OF ALUMINUM MONUMENT. PLACED POLY. MONUMENT ON TOP OF STONE OF RECORD AND REFERENCED SAME.

1) Was the corner restored through acceptance of (1) an obliterated evidence location, or, (2) a found perpetuated location?

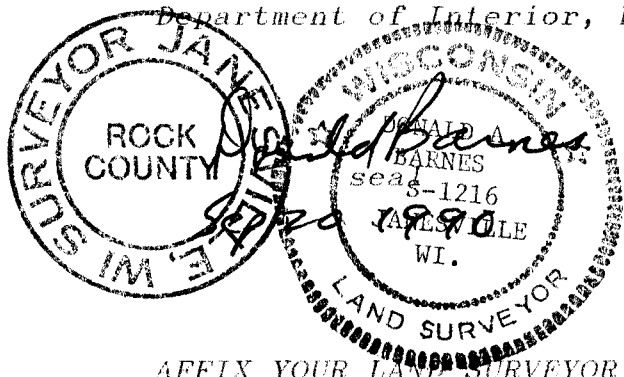
ACCEPTED FOUND PERPETUATED STONE MONUMENT THAT WAS PLACED BY RUGER.

D) Describe any material discrepancy between the location of the corner as restored or reestablished and the location of that corner as previously restored or reestablished by distance and direction. Show the discrepancy on the plan view drawing under (a), above. Show the distances between the corner as previously restored or reestablished and (1) the corner as restored or reestablished, and (2) to at least 4 of the witness monuments shown on the drawing in (a), above.

IN VOLUME 5 PAGE 505 THE MAP SHOWS THE LOCATION OF THE PREVIOUSLY RESTORED MONUMENTS WHICH ARE IN DISCREPANCY WITH EACH OTHER.

(E) Was the corner reestablished through lost corner proportionate methods? If so, show the method, including the directions and distances to other public land survey corners used as evidence or used for proportioning the corner location.

I, Donald Barnes, hereby certify that the corner points as identified by the corner code index were, in a field survey on, JULY 13, 1989, established, re-established, monumented, re-monumented, recovered or restored as expressed below and in conformance with the regulations and rules as required in the current manual of survey instructions of the United States Department of Interior, Bureau of Land Management.



COUNTY SURVEYOR FILING DATA

Date of computer entry \_\_\_\_\_

Date microfilmed \_\_\_\_\_

Number of included sheets \_\_\_\_\_

CORNER CODE

AFFIX YOUR LAND SURVEYOR SEAL

R11