

# U.S. PUBLIC LAND SURVEY MONUMENT RECORD

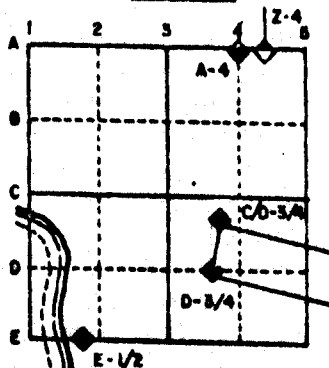
For Public Land Survey Corners in the  
T. 2 N., R. 12 E.

## CORNER CODE INDEX

	1	2	3	4	5	6	7	8	9	10	11	12	13	14	15	16	17	18	19	20	21	22	23	24	25
A																									
B																									
C	6	5	4	3	2																				
D																									
E																									
F																									
G	7	8	9	10	11	12																			
H																									
I																									
J																									
K																									
L	18	17	16	15	14	13																			
M																									
N																									
O																									
P	19	20	21	22	23	24																			
Q																									
R																									
S																									
T	30	29	28	27	26	25																			
U																									
V																									
W																									
X	31	32	33	34	35	36																			
Y																									
Z																									

PLACE MONUMENT SYMBOL (◆) AT PROPER  
LOCATION ON ABOVE INDEX

### EXAMPLE



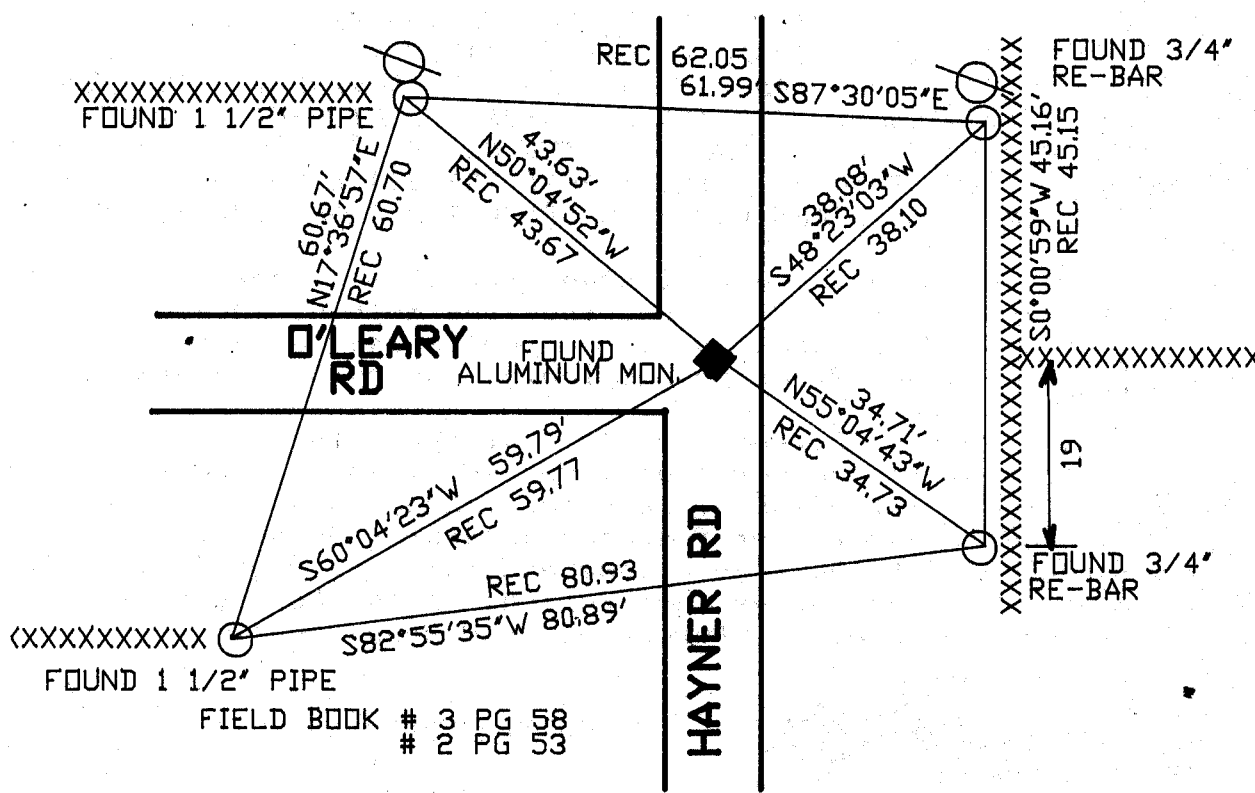
ROCK TWP  
ROCK COUNTY WI

IF AVAILABLE  
STATE PLANE COORDINATES

North (Y) \_\_\_\_\_ Eleve. (Z) \_\_\_\_\_  
 East (X) \_\_\_\_\_ Zone \_\_\_\_\_  
 Hor. Datum \_\_\_\_\_ Vert. Datum \_\_\_\_\_

e.) ◆ CORNER MONUMENT ○ WITNESS MONUMENT

BEARINGS ARE BASED ON: ASSUMED



MICROFILMED

SHEET \_\_\_ OF \_\_\_

CORNER CODE: J//

(B) Describe any record evidence, monument evidence, occupational evidence, testimonial evidence or any other material evidence you considered, and whether the monument was found or placed.

1853 McVEAN VOL 1 PG 17 STATES NOTHING ABOUT CORNER. SHOWS A DISTANCE OF 5250.63 TO NORTH QUARTER CORNER OF SECTION 9.  
1853 McVEAN VOL 1 PG 16 SHOWS DISTANCE OF 2637.36 TO SE CORNER OF SECTION 9 AND 5278.02 TO S 1/4 CORNER OF SECTION 16.  
1973 LEE VOL 4 PG 594. DUG AND FOUND 8"X8"X21" LIME STONE ON END 2 1/2' DEEP. REFERENCED SAME BUT DID NOT STATE THE TYPE OF MONUMENT THAT HE PLACED.  
1973 LEE VOL 5 PG 50 FOUND 8X8X21 LIMESTONE. SHOWS TIES.  
1977 BARNES VOL 5 PG 283 DUG AND FOUND WOOD STAKE 3' 10" DEEP. FOUND NE AND SE REFERENCE PIN AND SPIKE TO THE NORTH AND EAST.

THE FOLLOWING DISTANCES ARE TO THE STAKE.

TO	NE PIN	REC	35.96	MEASURED	38.10
	SE PIN	REC	36.62	MEASURED	34.73
	NORTH SPIKE	REC	9.00	MEASURED	9.15
	EAST SPIKE	REC	9.00	MEASURED	8.75

PLACED AN ALUMINUM MONUMENT AT THE LOCATION OF THE WOOD STAKE.

1986 BARNES VOL 6 PG 363. FOUND ALUMINUM MONUMENT. SHOWS A DISTANCE OF 5271.26 TO THE N 1/4 CORNER OF SECTION 9.

FOUND ALUMINUM MONUMENT 2" DEEP.

C) Was the corner restored through acceptance of (1) an obliterated evidence location, or, (2) a found perpetuated location?

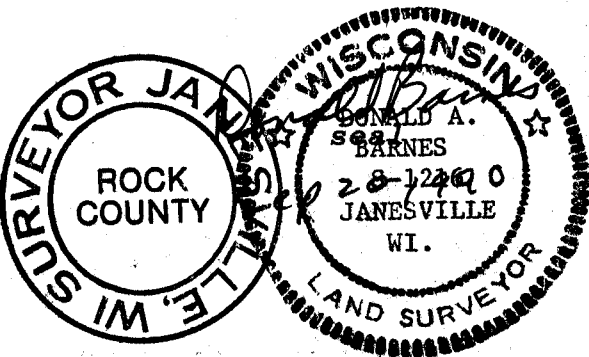
ACCEPTED FOUND PERPETUATED LOCATION.

D) Describe any material discrepancy between the location of the corner as restored or reestablished and the location of that corner as previously restored or reestablished by distance and direction. Show the discrepancy on the plan view drawing under (a), above. Show the distances between the corner as previously restored or reestablished and (1) the corner as restored or reestablished, and (2) to at least 4 of the witness monuments shown on the drawing in (a), above.

BOTH OF LEE'S 1973 DISTANCES TO THE NE AND SE REFERENCE PINS MUST BE IN ERROR. USING THOSE RECORD DISTANCE WOULD PLACE THE CORNER 3.25 NORTH AND .06' EAST OF THE ALUMINUM MONUMENT. THE FOUND STAKE IS IN HARMONY WITH THE DISTANCES TO HIS SPIKES THAT HE CALLED FOR IN HIS FIELD NOTES. THE DEPTH AT WHICH HE FOUND THE STONE AND THE DEPTH AT WHICH I FOND THE STAKE WOULD SUPPORT THE PREMISE THAT THE STAKE WAS JUST BELOW THE STONE THAT HE FOUND.

(E) Was the corner reestablished through lost corner proportionate methods? If so, show the method, including the directions and distances to other public land survey corners used as evidence or used for proportioning the corner location.

I, Donald Barnes, hereby certify that the corner points as identified by the corner code index were, in a field survey on, JULY 21, 1989, established, re-established, monumented, re-monumented, recovered or restored as expressed below and in conformance with the regulations and rules as required in the current manual of survey instructions of the United States Department of Interior, Bureau of Land Management.



COUNTY SURVEYOR FILING DATA

Date of computer entry \_\_\_\_\_

Date microfilmed \_\_\_\_\_

Number of included sheets \_\_\_\_\_

CORNER CODE

J11