

U.S. PUBLIC LAND SURVEY MONUMENT RECORD

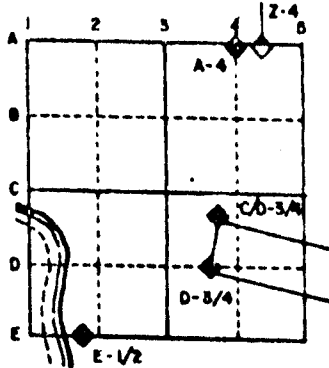
For Public Land Survey Corners in the
T. 2 N., R. 12 E.

CORNER CODE INDEX

	1	2	3	4	5	6	7	8	9	10	11	12	13	14	15	16	17	18	19	20	21	22	23	24	25
A																									
B																									
C	6																								
D		5																							
E			4																						
F				3																					
G					2																				
H																									
I																									
J	7																								
K		6																							
L			5																						
M				4																					
N					3																				
O						2																			
P							1																		
Q																									
R																									
S																									
T																									
U																									
V																									
W																									
X																									
Y																									
Z																									

PLACE MONUMENT SYMBOL (◆) AT PROPER
LOCATION ON ABOVE INDEX

EXAMPLE



ROCK TWP
ROCK COUNTY WI

IF AVAILABLE
STATE PLANE COORDINATES

North (Y) _____ Eleve. (Z) _____
 East (X) _____ Zone _____
 Hor. Datum _____ Vert. Datum _____

◆ CORNER MONUMENT

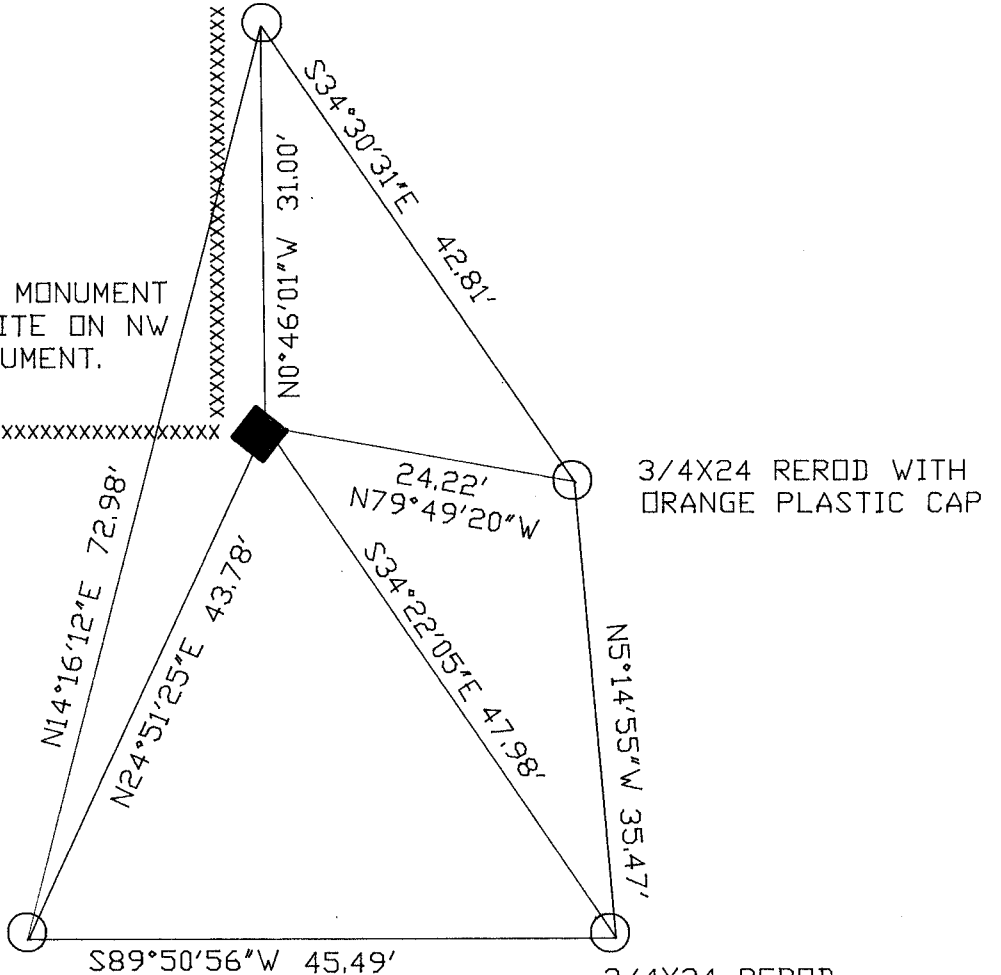
○ WITNESS MONUMENT

BEARINGS ARE BASED ON: ROCK TWP PROJECT

PLACED POLY MONUMENT
WITH CARSONITE ON NW
EDGE OF MONUMENT.

XXXXXXXXXXXXXXXXXXXXXXXXXXXX

3/4X24 REROD WITH
ORANGE PLASTIC CAP



3/4X24 REROD
22" DEEP
WITH MAGNET

3/4X24 REROD WITH
ORANGE PLASTIC CAP

3/4X24 REROD
22" DEEP
WITH MAGNET

FIELD BOOK #3 PG 38 & STATION
OBSERVATION SHEET #1566

MICROFILMED

(B) Describe any record evidence, monument evidence, occupational evidence, testimonial evidence or any other material evidence you considered, and whether the monument was found or placed.

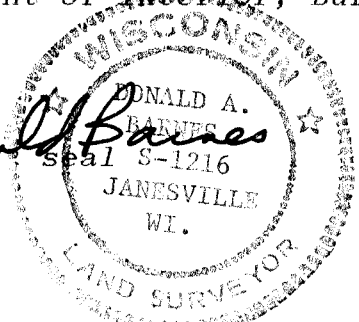
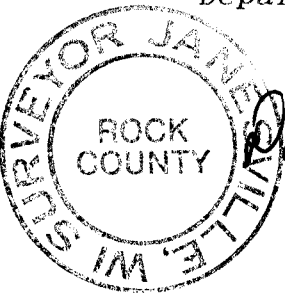
- 1834 HARRISON ORIGINAL GOVERNMENT SURVEYOR. FIELD NOTES- QUARTER SECTION CORNER BURR OAK 12 N51W 250 AND BURR OAK 6 S10E 72. MEASURED 2652.54 TO SE AND SW CORNERS OF SECTION 16.
- 1944 SUNNY PLAT OF SURVEY. SHOWS 1371.9 FROM A PROPERTY CORNER TO THE SOUTH TO THE FENCE INTERSECTION AT THE N 1/4 CORNER OF SECTION 21.
- 1958 CIRCUIT COURT JUDGEMENT #6317 & #6002 THE EAST AND WEST QUARTER SECTION LINE OF SECTION 21 IS LOCATED IN THE CENTER OF THE CEMETERY ROAD AS IT INTERSECTS COUNTY TRUNK D AND THAT A EXTENSION OF THE QUARTER SECTION LINE FROM THE CENTER OF THE CEMETERY ROAD EASTWARDLY TO ROCK RIVER CONSTITUTES THE NORTH BOUNDARY LINE OF SAID TWO-ROD HIGHWAY; THAT THE EAST AND WEST QUARTER SECTION LINE FROM COUNTY TRUNK D EASTERLY TO THE ROCK RIVER WAS LOCATED AND FIXED BY IRON PIPE MONUMENTS, BY B. SUNNY, IN 1955 BY SETTING AN IRON PIPE STAKE AT THE EAST SIDE OF CTH D, AN IRON STAKE AT THE MILWAUKEE RAILWAY RIGHT-OF-WAY, AN IRON STAKE AT THE CHICAGO & NORTHWESTERN RAILWAY R/W, AND AN IRON STAKE AT ROCK RIVER; THE LINE ESTABLISHED BY SAID IRON STAKES CONSTITUTES PART OF THE E/W QUARTER SECTION LINE OF SECTION 21.
- 1961 BATTERMAN PLAT OF SURVEY CALLS FOR A 10X6 RED HARD HEAD AT THE CORNER AND SHOWS 2643.64 TO THE CENTER OF SECTION 21. ALSO SHOWS A ANGLE OF 90-31 FROM THE N 1/4 CORNER-CENTER-POINT ON THE E/W CENTER LINE OF SECTION 21.
- 19?? BATTERMAN PLAT OF SURVEY. CALLS FOR A PIPE AT CENTER OF SECTION 21 AND A DISTANCE OF 2604.06 FROM THAT PIPE TO THE N 1/4 CORNER OF SECTION 21. SHOWS AN ANGLE OF 90-31 FROM THE N1/4 CORNER OF SECTION 21 AT THE CENTER ALONG THE E/W QUARTER LINE TO PROPERTY CORNERS. CALLS FOR A 10X6" RED HARD HEAD STONE AT THE N 1/4 CORNER OF SECTION 21.
- 1977 COMBS PLAT OF SURVEY. CALLS FOR 2604.08 FROM THE N 1/4 CORNER OF SECTION 21 TO THE CENTER OF SECTION 21.

DUG 2' RADIUS CIRCLE, 15 INCHES DEEP AT THE FENCE INTERSECTION. ABOUT 4 FEET TO THE EAST I FOUND A RED HARDHEAD 6 1/2X12X17 ON TOP OF THE GROUND. I PLACED A POLY MONUMENT AT RECORD DISTANCE (2643.64) FROM THE FOUND IRON PIPE AT THE CENTER OF SECTION 21. THE E/W LOCATION OF THE MONUMENT WAS PLACED SO THAT THE CENTER OF SECTION 21 AND 16 WOULD BE IN HARMONY WITH A STRAIGHT LINE BETWEEN THE NORTH AND SOUTH QUARTER CORNERS IN THOSE SECTIONS. THIS LOCATION IS IN HARMONY WITH OCCUPATION.

C) Was the corner restored through acceptance of (1) an obliterated evidence location, or, (2) a found perpetuated location?

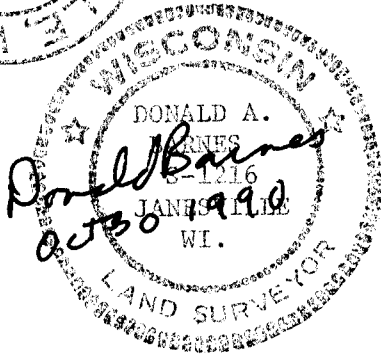
CORNER RESTORED THROUGH ACCEPTANCE OF OBLITERATED EVIDENCE LOCATION.

I, Donald Barnes, hereby certify that the corner points as identified by the corner code index were, in a field survey on, October 30, 1990, established, re-established, monumented, re-monumented, recovered or restored as expressed below and in conformance with the regulations and rules as required in the current manual of survey instructions of the United States Department of Interior, Bureau of Land Management.



COUNTY SURVEYOR FILING DATA
Date of computer entry _____
Date microfilmed _____
Number of included sheets 1
CORNER CODE

AFFIX YOUR LAND SURVEYOR SEAL



N 1/4
COR

S0-40-59E 2643.33

SEC 16

FOUND PIPE
OFF 0.13' FROM W 1/4 COR
TO E 1/4 CORNER
OFF 0.10' FROM N 1/4
COR TO S 1/4 COR.

W 1/4
COR

CENTER

S89-50-05E 2645.45

S89-50-25E 2652.53

E 1/4
COR

S0-41-13E 2642.88

SW CORNER

ORIG 2652.54
S89-54-06E 2660.55

N 1/4
CORNER

ORIG 2652.54
S89-55-36E 2651.10

SE CORNER

S0-25-11E 2643.80

S89-52-09E 2661.43
S89-58-11E 5364.00

N89-55-52E 2702.58

W 1/4
COR

MEANDER POST
EAST SIDE
OF ROCK RIVER

S0-23-15E 2646.52

SEC 21

OFF 39.46' W 1/4&MP
OFF 4.66 N/S 1/4 CORNERS
FD NAIL
CENTER OF PVMT

FD 1' PIPE
@ SOUTH EDGE PVMT
OFF 26.94' W 1/4 & MP
OFF 0.18 N/S 1/4 CORNERS

S1-25-17E 31.62
REC 33

FD PK
S0-26-18E 32.96

FD 1' PIPE
OFF 0.74 N/S 1/4 CORNERS
OFF 4.67 W 1/4 & MP
N88-19-46E 884.07
REC 884.29

S 1/4
COR

● PIPE USED FOR ESTABLISHING
N 1/4 CORNER OF SECTION 21

N //