

# U.S. PUBLIC LAND SURVEY MONUMENT RECORD

For Public Land Survey Corners In:

WI ADMINISTRATIVE CODE A-E 7.08 REQUIREMENT

T. 1 N. R. 10 E.

CORNER CODE INDEX

1	2	3	4	5	6	7	8	9	10	11	12	13	14	15	16	17	18	19	20	21	22	23	24	25	
A																									A
B																									B
C	6																								C
D																									D
E																									E
F																									F
G	7																								G
H																									H
J																									J
K																									K
L	18																								L
M																									M
N																									N
O																									O
P	19																								P
Q																									Q
R																									R
S																									S
T	30																								T
U																									U
V																									V
W																									W
X	31																								X
Y																									Y
Z																									Z
	1	2	3	4	5	6	7	8	9	10	11	12	13	14	15	16	17	18	19	20	21	22	23	24	25

AJON TWP  
ROCK COUNTY WI

IF AVAILABLE  
ROCK COUNTY COORDINATES PREFERRED

North \_\_\_\_\_ Elev. \_\_\_\_\_

East \_\_\_\_\_

Hor. Datum \_\_\_\_\_ Vert. Datum \_\_\_\_\_

LATITUDE \_\_\_\_\_ ELLIPS. HT. \_\_\_\_\_

LONGITUDE \_\_\_\_\_

GPS (X) \_\_\_\_\_ TRAVERSE (X) \_\_\_\_\_

BASED ON THE FOLLOWING CONTROL:  
\_\_\_\_\_

PLACE MONUMENT SYMBOL  AT PROPER LOCATION ON ABOVE INDEX

CORNER MONUMENT

WITNESS MONUMENT

(a)

BEARINGS ARE BASED ON: \_\_\_\_\_

FIELD BOOK \_\_\_\_\_ PAGE # \_\_\_\_\_

SHEET 1 OF 3

SHOW A PLAN VIEW DRAWING DEPICTING THE CORNER MONUMENT AND SURROUNDING PHYSICAL FEATURES, INCLUDING THE EXCAVATION AREA AND DEPTH.

PLANNING & ZONING COMMITTEE ADOPTED THE ABOVE FORM ON 12/2/1982

CORNER CODE R-11

AV586

(B) Describe any record evidence, monument evidence, occupational evidence, testimonial evidence or any other material evidence you considered, and whether the monument was found or placed.

1833 HARRISON EAST ON RAND. BET. SECS 21 & 28

198.0 INT. SUGAR CRK CRS SOUTH SET A MEANDERING  
POST & RAISED MOUND. LAND & SAME

1833 ORIG PLAT 198' FROM SW COR TO MP

1834 HARRISON EAST ON RAND. BET. 21 & 28 CONT.

392.7 LEAVE RIVER SET ? P AND ENTER ELM & MAPLE  
BOTTOM

1980 LEAVE IT & ENTER W & RED O. TIM

2640 TEMPY ¼ P

2970 ENTER WET MARSH

5263.5 INT. E BDY 19.8' N OF P LAND LEVEL & WET 3<sup>RD</sup> RATE  
TIM ELM MAPLE W & R O

COR WEST

2631.09 QUARTER SEC COR. RED O 10 S35E 17.82' RED O  
12 N26W 13.2'

4870.8 SET M P ON LEFT BANK SUGAR CREEK WILLOW 10  
N12E 13.86' ELM 12 N18W 49.5'

5263.5 SEC COR.

1834 ORIG PLAT 2640 FROM SE COR TO S ¼ COR. 2239.38 FROM  
S ¼ COR TO M.P. ON EAST BANK OF SUGAR CREEK

BEACHED & FOUND NOTHING. PLACED 3/4X24 REROD WITH CAP &  
CARBONITE POST.

C) Was the corner restored through acceptance of (1) an obliterated evidence location, or, (2) a found  
perpetuated location?

NO. OCCUPATION LINES SEEMED TO RUN RANDOMLY NEAR THIS  
LOCATION.

D) Describe any material discrepancy between the location of the corner as restored or reestablished  
and the location of that corner as previously restored or reestablished by distance and direction. Show  
the discrepancy on the plan view drawing under (a), above. Show the distances between the corner as  
previously restored or reestablished and (1) the corner as restored or reestablished, and (2) to at least  
4 of the witness monuments shown on the drawing in (a), above.

SEE SKETCH FOR DISCREPANCY BETWEEN ORIGINAL PLAT & FIELD  
NOTES. THE FIELD NOTES CALL FOR THE DISTANCE FROM THE NW  
COR SEC 28 TO THE N ¼ COR SEC 28 AS 2632.41' AND THE  
DISTANCE FROM THE NE COR SEC 28 TO THE N ¼ COR SEC 28 AS  
2631.09'.

(E) Was the corner reestablished through lost corner proportionate methods? If so, show the method,  
including the directions and distances to other public land survey corners used as evidence or used for  
proportioning the corner location.

YES. THE CORNER WAS PLACED AT SINGLE PROPORTIONATE  
DISTANCE BY USING THE FIELD NOTE DISTANCES.

I, Donald Barnes, hereby certify that the corner location as identified by the corner code index  
was determined by me under my direction and control and that this U.S. Public Land Survey  
Monument Record is correct and complete to the best of my knowledge and belief.

Seal

Donald Barnes

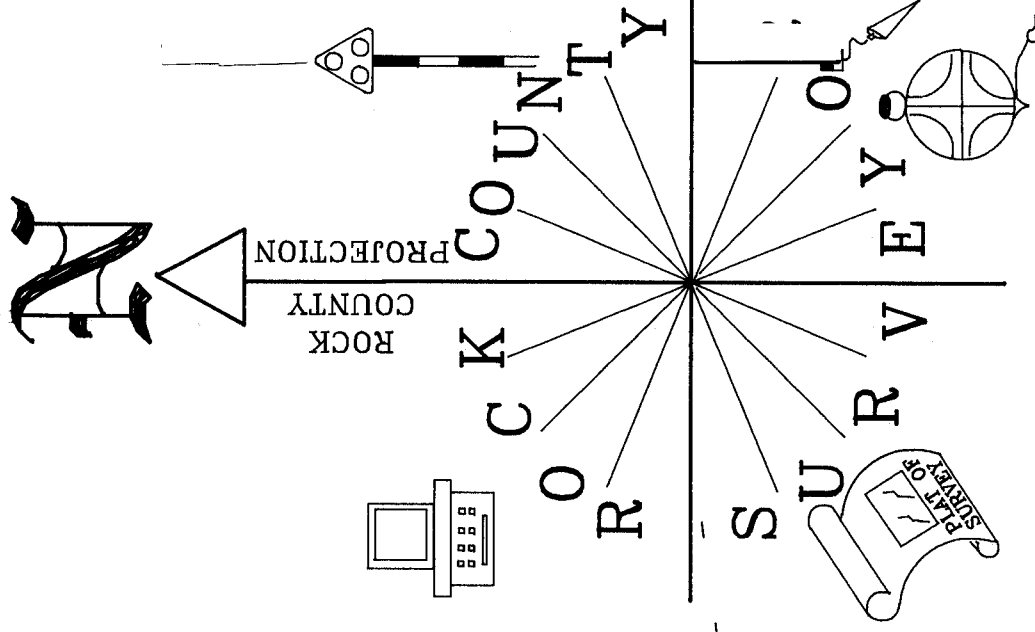
Emboss

12/30/01

SHEET 1 OF 3

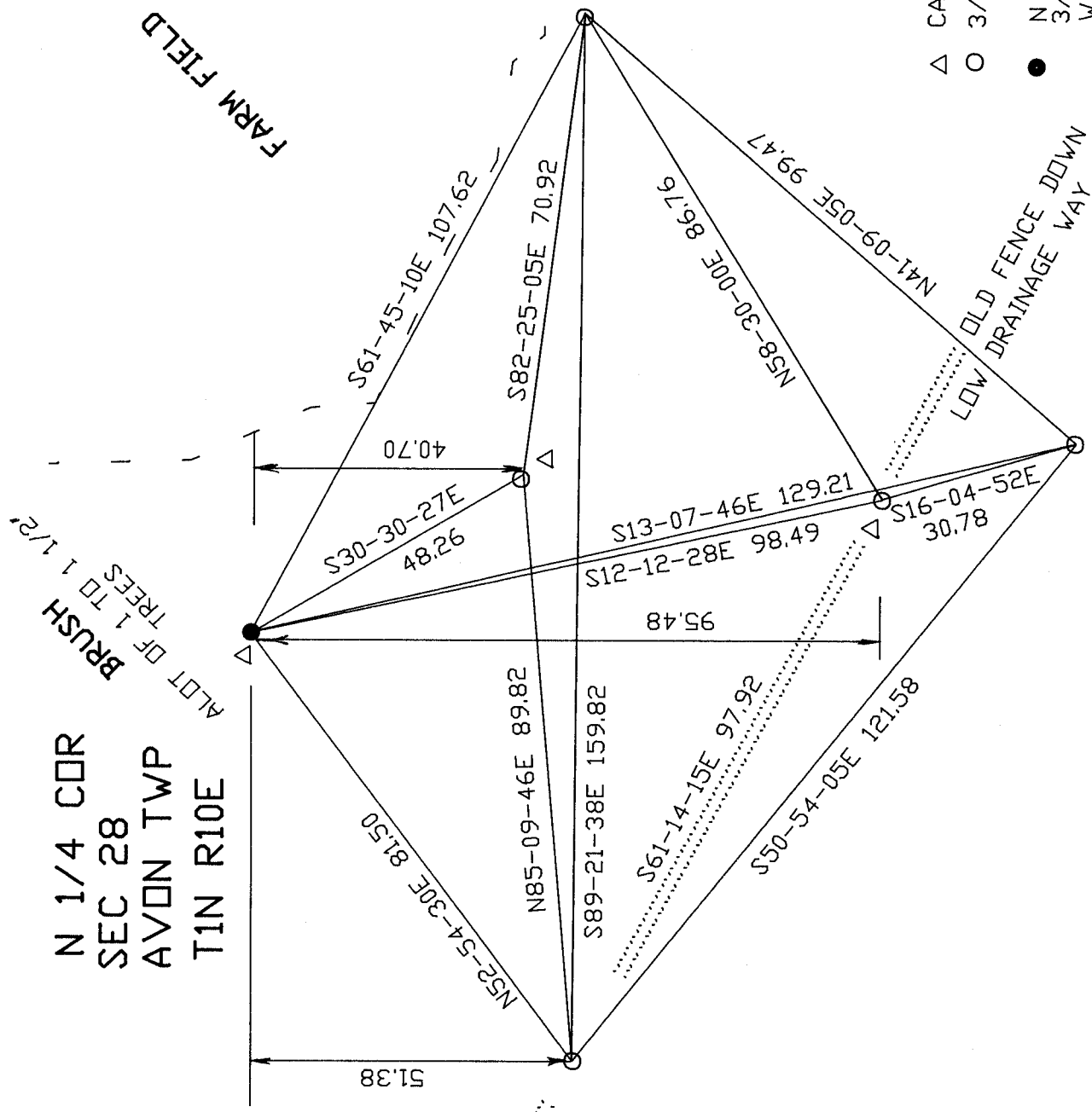
CORNER CODE **R-11**

A.E. 7.08 REQUIREMENT



NOT TO SCALE

OBSERVATION SHEET #312



- △ CARSONITE POST
- 3/4X24 CAPPED REROD
- N 1/4 COR SEC 28  
3/4X24 CAPPED REROD  
WITH CARSONITE POST

OLD FENCE DOWN

*Danell Baines*  
12/30 /01

EMOSSED SEAL

