

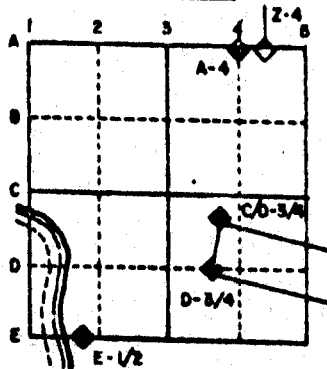
U.S. PUBLIC LAND SURVEY MONUMENT RECORD

For Public Land Survey Corners in the
T. 2 N., R. 12 E.

CORNER CODE INDEX

| | | | | | | | | | | | | | | | | | | | | | | | | | |
|---|----|----|----|----|----|----|---|---|---|----|----|----|----|----|----|----|----|----|----|----|----|----|----|----|----|
| | 1 | 2 | 3 | 4 | 5 | 6 | 7 | 8 | 9 | 10 | 11 | 12 | 13 | 14 | 15 | 16 | 17 | 18 | 19 | 20 | 21 | 22 | 23 | 24 | 25 |
| A | | | | | | | | | | | | | | | | | | | | | | | | | |
| B | | | | | | | | | | | | | | | | | | | | | | | | | |
| C | 6 | 5 | 4 | 3 | 2 | | | | | | | | | | | | | | | | | | | | |
| D | | | | | | | | | | | | | | | | | | | | | | | | | |
| E | | | | | | | | | | | | | | | | | | | | | | | | | |
| F | | | | | | | | | | | | | | | | | | | | | | | | | |
| G | 7 | 6 | 5 | 4 | 3 | 2 | | | | | | | | | | | | | | | | | | | |
| H | | | | | | | | | | | | | | | | | | | | | | | | | |
| I | | | | | | | | | | | | | | | | | | | | | | | | | |
| J | | | | | | | | | | | | | | | | | | | | | | | | | |
| K | | | | | | | | | | | | | | | | | | | | | | | | | |
| L | 18 | 17 | 16 | 15 | 14 | 13 | | | | | | | | | | | | | | | | | | | |
| M | | | | | | | | | | | | | | | | | | | | | | | | | |
| N | | | | | | | | | | | | | | | | | | | | | | | | | |
| O | | | | | | | | | | | | | | | | | | | | | | | | | |
| P | 19 | 20 | 21 | 22 | 23 | 24 | | | | | | | | | | | | | | | | | | | |
| Q | | | | | | | | | | | | | | | | | | | | | | | | | |
| R | | | | | | | | | | | | | | | | | | | | | | | | | |
| S | | | | | | | | | | | | | | | | | | | | | | | | | |
| T | 30 | 29 | 28 | 27 | 26 | 25 | | | | | | | | | | | | | | | | | | | |
| U | | | | | | | | | | | | | | | | | | | | | | | | | |
| V | | | | | | | | | | | | | | | | | | | | | | | | | |
| W | | | | | | | | | | | | | | | | | | | | | | | | | |
| X | 31 | 32 | 33 | 34 | 35 | 36 | | | | | | | | | | | | | | | | | | | |
| Y | | | | | | | | | | | | | | | | | | | | | | | | | |
| Z | | | | | | | | | | | | | | | | | | | | | | | | | |

EXAMPLE



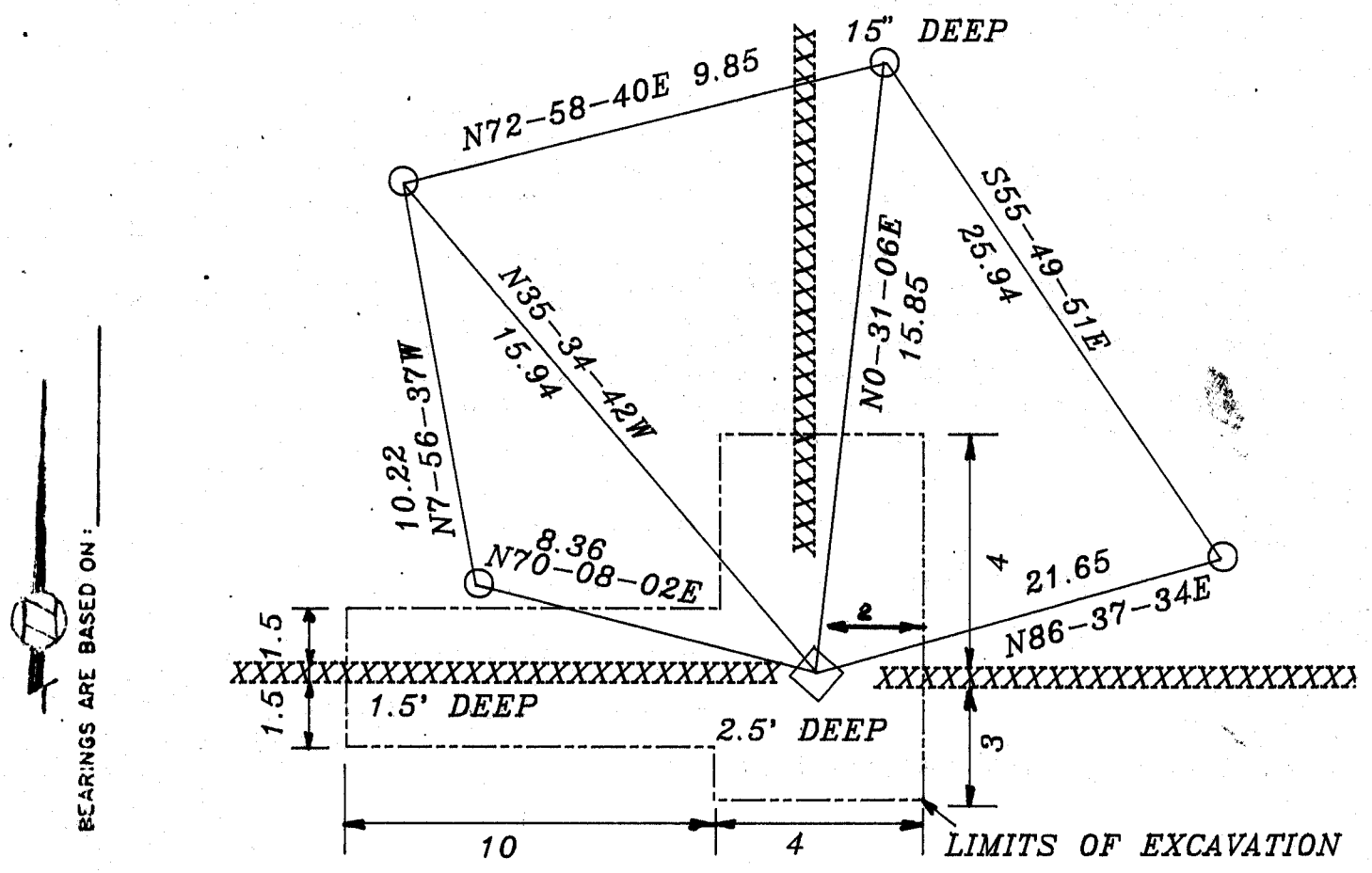
ROCK TWP
ROCK COUNTY WI

IF AVAILABLE STATE PLANE COORDINATES

NAD 27 North (Y) 238,210.18 Elev. (Z) _____
 East (X) 2,250,001.31 Zone _____
 Hor. Datum _____ Vert. Datum _____
 HURD 238,210.73
2,250,001.50

PLACE MONUMENT SYMBOL (◆) AT PROPER LOCATION ON ABOVE INDEX

e.) ◆ CORNER MONUMENT ○ WITNESS MONUMENT



BEARINGS ARE BASED ON:

- 3/4X24 REROD
- POLY MONUMENT
- ◆ PLACED CARSONITE POST NEXT TO MONUMENT

FIELD BOOK #2 PG 20

MICROFILMED

SHEET ___ OF ___

CORNER CODE: G/13

(B) Describe any record evidence, monument evidence, occupational evidence, testimonial evidence or any other material evidence you considered, and whether the monument was found or placed.

1853 McVEAN VOL 1 PG 17. SHOWS A DISTANCE OF 2628.78 TO THE CENTER OF SECTION 9.

1863 LOCKE VOL 1 PG 189 FOUND REMAINS OF OLD STAKE. SET STAKE AND HARD HEAD 18X6X4. SHOWS A DISTANCE OF 2636.04 TO THE NW CORNER OF SECTION 10, 2607.00 TO THE SW CORNER OF SECTION 10, AND 2260.5 TO THE WEST BANK OF ROCK RIVER.

19?? BARNES VOL 5 PG 517 SHOWS COORDINATES OF N/S 238,210.73; E/W 2,250,001.50

1986 BARNES VOL 6 PG 363 PLACED POLY MONUMENT. SHOWS THE FOLLOWING DISTANCES:

| | | | |
|----|---------------|-----------|---------|
| TO | NW COR SEC 10 | N1-24-40W | 2640.89 |
| | HURD | N1-24-35E | 2640.83 |
| | SW COR SEC 10 | S1-39-03E | 2636.13 |

FOUND POLY MONUMENT.

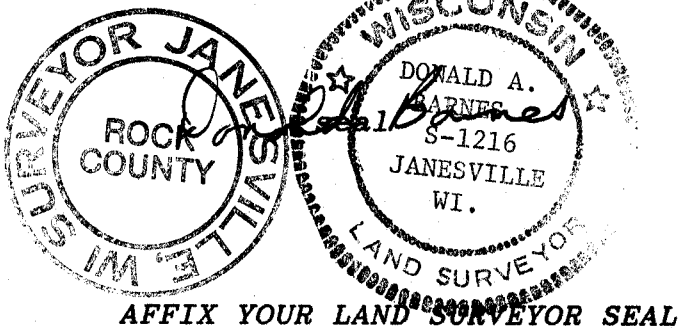
C) Was the corner restored through acceptance of (1) an obliterated evidence location, or, (2) a found perpetuated location?

ACCEPTED FOUND POLY MONUMENT.

D) Describe any material discrepancy between the location of the corner as restored or reestablished and the location of that corner as previously restored or reestablished by distance and direction. Show the discrepancy on the plan view drawing under (a), above. Show the distances between the corner as previously restored or reestablished and (1) the corner as restored or reestablished, and (2) to at least 4 of the witness monuments shown on the drawing in (a), above.

(E) Was the corner reestablished through lost corner proportionate methods? If so, show the method, including the directions and distances to other public land survey corners used as evidence or used for proportioning the corner location.

I, Donald Barnes, hereby certify that the corner points as identified by the corner code index were, in a field survey on, July 19, 1990, established, re-established, monumented, re-monumented, recovered or restored as expressed below and in conformance with the regulations and rules as required in the current manual of survey instructions of the United States Department of Interior, Bureau of Land Management.



COUNTY SURVEYOR FILING DATA

Date of computer entry _____

Date microfilmed _____

Number of included sheets _____
CORNER CODE