

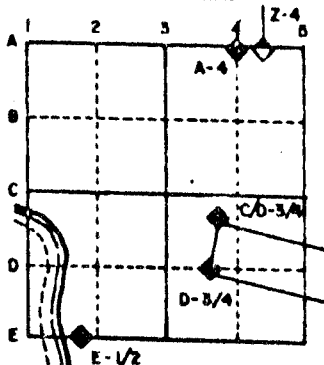
U.S. PUBLIC LAND SURVEY MONUMENT RECORD

For Public Land Survey Corners in the
T. 2 N., R. 12 E.

CORNER CODE INDEX

	1	2	3	4	5	6	7	8	9	10	11	12	13	14	15	16	17	18	19	20	21	22	23	24	25
A																									
B																									
C	6																								
D		5																							
E			4																						
F				3																					
G					2																				
H	7																								
I		8																							
J			9																						
K				10																					
L					11																				
M	18																								
N		17																							
O			16																						
P				15																					
Q					14																				
R						13																			
S							12																		
T								11																	
U									10																
V										9															
W											8														
X												7													
Y													6												
Z														5											

EXAMPLE



ROCK TWP
ROCK COUNTY WI

IF AVAILABLE
STATE PLANE COORDINATES

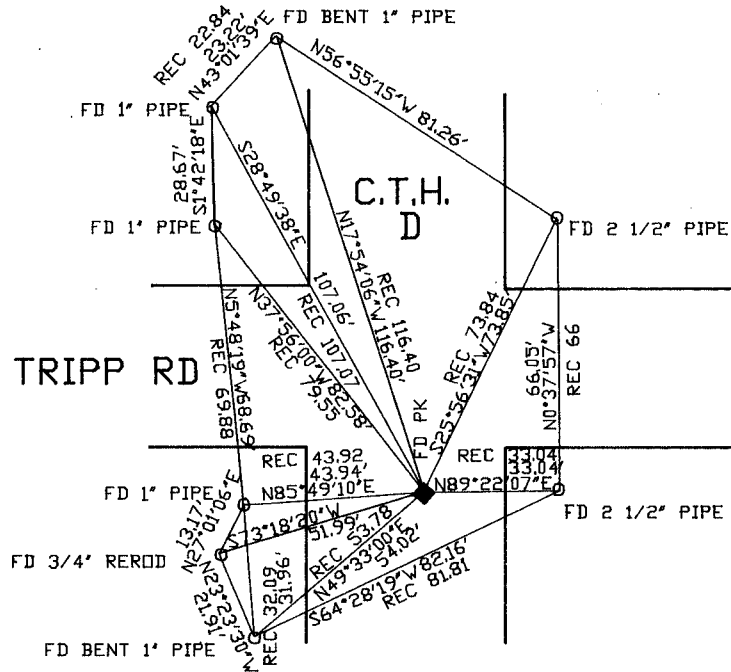
NAD
27 North (Y) 232,935.80 Elev. (Z) _____
East (X) 2,250,137.32 Zone _____
Hor. Datum _____ Vert. Datum _____
HURD 232,936.04
2,250,137.52

PLACE MONUMENT SYMBOL (◆) AT PROPER
LOCATION ON ABOVE INDEX

◆ CORNER MONUMENT
ALUM MON.

○ WITNESS MONUMENT

BEARINGS ARE BASED ON: TOWNSHIP PRO SECT



◆ OBSERVATIONS AT STA 3557
FD PK. 3.5 SOUTH OF SOUTH
CURB PROJECTED FROM WEST & 1.5
EAST OF CENTER OF PAVEMENT.

SHEET ___ OF ___

CORNER CODE: L 13

(B) Describe any record evidence, monument evidence, occupational evidence, testimonial evidence or any other material evidence you considered, and whether the monument was found or placed.

1853 Mc VEAN VOL 1 PG 16. STATES NOTHING ABOUT THE CORNER. SHOWS A DISTANCE OF 2605.68' TO THE W 1/4 CORNER OF SECTION 16 AND 2616.90 TO THE SE CORNER OF SECTION 16.

1958 BATTERMAN VOL 3 PG 563 JR. 3/4" PIN AT CORNER. REFERENCED SAME.

19?? HURD VOL 5 PG 517 N/S 232,936.04 E/W 2,250,137.52

FOUND PK AND OLD REFERENCE TIES. *REPLACED WITH ALUM MON*

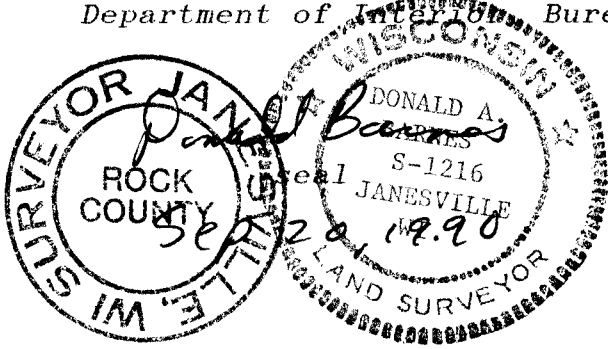
C) Was the corner restored through acceptance of (1) an obliterated evidence location, or, (2) a found perpetuated location?

ACCEPTED FOUND MONUMENT.

D) Describe any material discrepancy between the location of the corner as restored or reestablished and the location of that corner as previously restored or reestablished by distance and direction. Show the discrepancy on the plan view drawing under (a), above. Show the distances between the corner as previously restored or reestablished and (1) the corner as restored or reestablished, and (2) to at least 4 of the witness monuments shown on the drawing in (a), above.

(E) Was the corner reestablished through lost corner proportionate methods? If so, show the method, including the directions and distances to other public land survey corners used as evidence or used for proportioning the corner location.

I, Donald Barnes, hereby certify that the corner points as identified by the corner code index were, in a field survey on, July 20, 1990, established, re-established, monumented, re-monumented, recovered or restored as expressed below and in conformance with the regulations and rules as required in the current manual of survey instructions of the United States Department of Interior, Bureau of Land Management.



AFFIX YOUR LAND SURVEYOR SEAL

COUNTY SURVEYOR FILING DATA

Date of computer entry _____

Date microfilmed _____

Number of included sheets _____
CORNER CODE

413