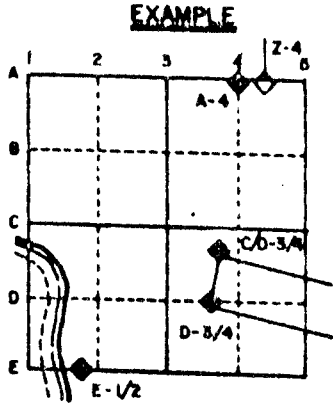


U.S. PUBLIC LAND SURVEY MONUMENT RECORD

For Public Land Survey Corners in the
T. 2 N., R. 12 E.

CORNER CODE INDEX

	1	2	3	4	5	6	7	8	9	10	11	12	13	14	15	16	17	18	19	20	21	22	23	24	25
A																									
B																									
C	6																								
D		5																							
E			4																						
F				3																					
G	7																								
H		6																							
J			9																						
K				10																					
L	18																								
M		17																							
N			16																						
O				15																					
P	19																								
Q		20																							
R			21																						
S				22																					
T	30																								
U		29																							
V			28																						
W				27																					
X	31																								
Y		32																							
Z			33																						
				34																					
					35																				
						36																			



ROCK TWP
ROCK COUNTY WI

IF AVAILABLE
STATE PLANE COORDINATES

NAD North (Y) 230,297.65 Eleve. (Z) _____
 27 East (X) 2,250,197.11 Zone _____
 Hor. Datum _____ Vert. Datum _____
230,297.85
2,250,197.35

PLACE MONUMENT SYMBOL (◆) AT PROPER HURD
LOCATION ON ABOVE INDEX

◆ CORNER MONUMENT

○ WITNESS MONUMENT

SEE SHEET 2

BEARINGS ARE BASED ON:

MICROFILMED

SHEET 1 OF 2

CORNER CODE: N13

(B) Describe any record evidence, monument evidence, occupational evidence, testimonial evidence or any other material evidence you considered, and whether the monument was found or placed.

1834 HARRISON ORIGINAL GOVERNMENT SURVEYOR. FIELD NOTES. CORNER TO SECTIONS 15,16,21,22. BUR OAK 18 N54 E 150, BURR OAK 12 S75E 200, BURR OAK 10 S15W 3.05, AND BURR OAK 10 N74W 2.80

1853 McVEAN VOL 1 PG 16. SHOWS 2616.90 TO E 1/4 CORNER OF SECTION 16.

1958 BATTERMAN JR. VOL 3 PG 561. STATES NOTHING ABOUT CORNER BUT REFERENCED CORNER.

1978 BARNES VOL 5 PG 455 DUG AND FOUND OLD ASPHALT ROAD AND R/R SPIKE 5' DEEP. PLACED ALUMINUM MONUMENT.

19?? HURD VOL 5 PG 517 N/S 230,297.85; E/W 2,250,197.35

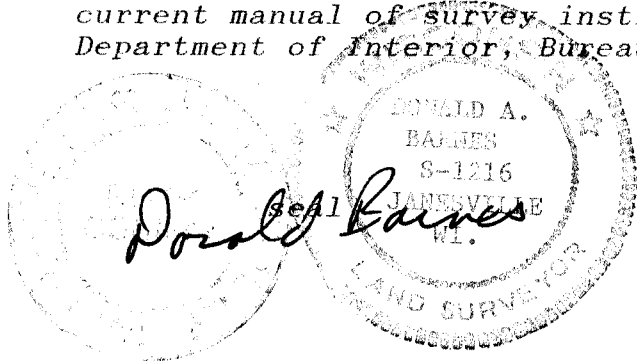
C) Was the corner restored through acceptance of (1) an obliterated evidence location, or, (2) a found perpetuated location?

ACCEPTED FOUND PERPETUATED LOCATION

D) Describe any material discrepancy between the location of the corner as restored or reestablished and the location of that corner as previously restored or reestablished by distance and direction. Show the discrepancy on the plan view drawing under (a), above. Show the distances between the corner as previously restored or reestablished and (1) the corner as restored or reestablished, and (2) to at least 4 of the witness monuments shown on the drawing in (a), above.

(E) Was the corner reestablished through lost corner proportionate methods? If so, show the method, including the directions and distances to other public land survey corners used as evidence or used for proportioning the corner location.

I, Donald Barnes, hereby certify that the corner points as identified by the corner code index were, in a field survey on, October 31, 1990, established, re-established, monumented, re-monumented, recovered or restored as expressed below and in conformance with the regulations and rules as required in the current manual of survey instructions of the United States Department of Interior, Bureau of Land Management.



COUNTY SURVEYOR FILING DATA

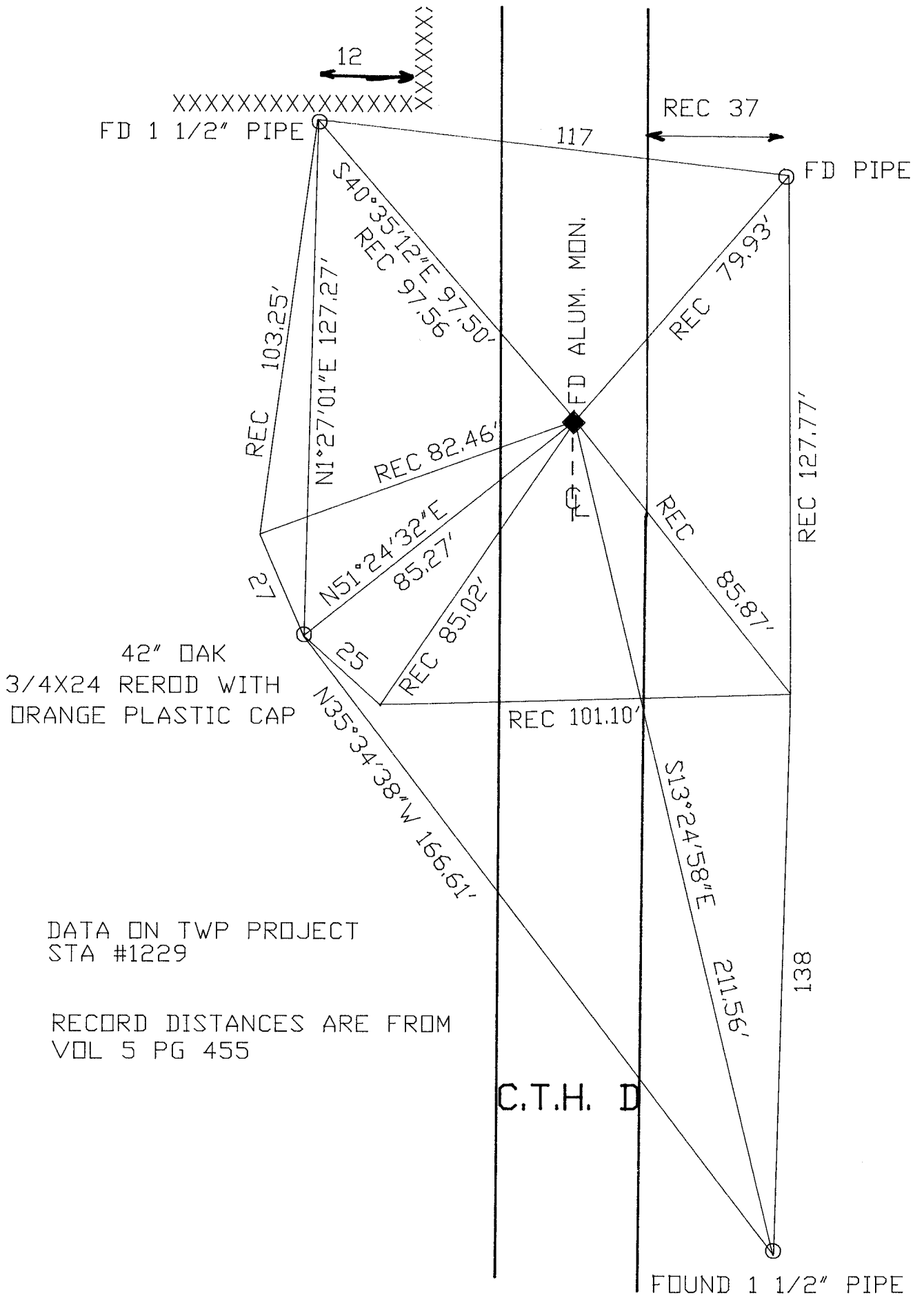
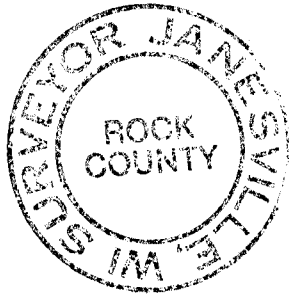
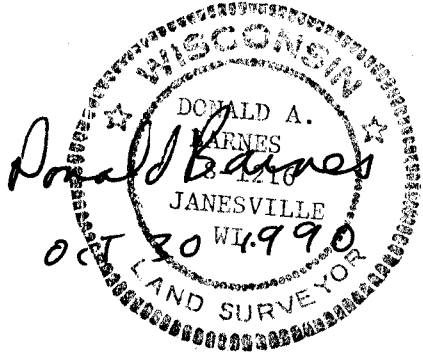
Date of computer entry _____

Date microfilmed _____

Number of included sheets _____

CORNER CODE

AFFIX YOUR LAND SURVEYOR SEAL



DATA ON TWP PROJECT
STA #1229

RECORD DISTANCES ARE FROM
VOL 5 PG 455