

Paper weight-110# (minimum)

Black nonfading ink required

U.S. PUBLIC LAND SURVEY MONUMENT RECORD

For Public Land Survey Corners In:
T. 4 N. R. 10 E. 4th P.M.
CORNER CODE INDEX

WI ADMINISTRATIVE CODE A-E 7.08 REQUIREMENT
REV 10/23/2004 USMONREC.DWG

UNION TWP
ROCK COUNTY WI

IF AVAILABLE
ROCK COUNTY COORDINATES PREFERRED

A	1	2	3	4	5	6	7	8	9	10	11	12	13	14	15	16	17	18	19	20	21	22	23	24	25	A
B		6				5				4				3				2				1				B
C																										C
D																										D
E																										E
F																										F
G																										G
H																										H
I																										I
J																										J
K																										K
L																										L
M																										M
N																										N
O																										O
P																										P
Q																										Q
R																										R
S																										S
T																										T
U																										U
V																										V
W																										W
X																										X
Y																										Y
Z																										Z

North _____ Elev. _____

East _____

Hor. Datum _____ Vert. Datum _____

LATITUDE _____ ELLIPS. HT. _____

LONGITUDE _____

NAD83(91) _____ NETWORK ADJ. YR 2010 _____

GPS (X) _____ TRAVERSE (X) X

BASED ON THE FOLLOWING CONTROL:

PLACE MONUMENT SYMBOL AT PROPER LOCATION ON ABOVE INDEX

CORNER MONUMENT WITNESS MONUMENT

BEARINGS ARE BASED ON: ROCK COUNTY PROJECTION

FIELD BOOK _____ PAGE # _____
OR OBSERVATION SHEET _____

SHEET 1 OF 3

SHOW A PLAN VIEW DRAWING DEPICTING THE CORNER MONUMENT AND SURROUNDING PHYSICAL FEATURES, INCLUDING THE EXCAVATION AREA AND DEPTH.

PLANNING & ZONING COMMITTEE ADOPTED THIS FORM ON 12/2/1982

CORNER CODE A-11

UN506 N1/4CORSEC4

(B) Describe any record evidence, monument evidence, occupational evidence, testimonial evidence or any other material evidence you considered, and whether the monument was found or placed.

1833 BRINK SOUTH BOUNDARY OF T5N R10E WEST ON SOUTH SIDE SECTION 33

208.56 BURR OAK 14

2408.34 BURR OAK 12

2640.00 SET QUARTER SECTION POST BURR OAK 9 N1E 29.70'; BUR OAK 10 N59 1/2E 58.74'

5280.00 SET POST CORNER TO SECTIONS 32 & 33 BURR OAK 12 N2? 4E 84.48'; BURR OAK 12 N63 1/2W 112.70' LAND & C SAME

1870 RUGER AUG REMON-115 WEST ON NORTH LINE OF NE 1/4 SEC 4 ON A VAR 7-13; OFFSET SOUTH 12.54' INTERSECTED QUARTER LINE OF SECTION 33. T5N R10 13.86' SOUTH OF QUARTER CORNER. COR VAR 7-11 CONTINUED WEST ON NORTH LINE OF NW QUARTER ON A VAR 7-13; OFFSET SOUTH 14.52' OFFSET NORTH 37.62' AT

5324.22 INTERSECTED WEST BOUNDARY LINE 3.96' SOUTH OF CORNER. FOUND CORNER ESTABLISHED BY CHURCH FROM BEARING TREES. ALSO FOUND STUMP OF WEST BEARING TREE AND REMAINS OF STUMP OF EAST BEARING TREE. CORNER ESTABLISHED BY CHURCH CORRECT. COR VAR 6-37' ESTABLISHED NORTH QUARTER CORNER OF SECTION 4 ON THE TOWN LINE AND EQUI-DISTANT FROM THE NE AND NW CORNERS OF SAID SECTION. IT BEING 2662.11 DISTANT FROM EACH AND 63.52' WEST OF THE SOUTH QUARTER CORNER OF SECTION 33 T5 R10

1904 KERCH VOL 3 PG 22 MONUMENT

1978 LEE CSM VOL 7 PG 248 CONG. MON FD.

1978 LEE #5073 CUT STONE. WEST 2673.18 TO CUT STONE @ NW COR SEC 4, SO-07-41E 2545.03 TO CENTER OF SEC 4, SO-07-41W 5193.91 TO CI @ S 1/4 COR SEC 4

1975 WILHELM #5074 & 40034 FD 6X6 LIMESTONE MON. 65.25 WESTERLY 65.25 FROM PIPE @ S 1/4 COR SEC 33. S 1/4 COR SEC 33 TO PIPE @ SE COR SEC 33 IS N89-55-48E 2628.22 & FROM S 1/4 COR SEC 33 TO SW COR SEC 33 IS N89-51-47W 2645.60

1980 FED #5075 6X6 LIMESTONE MON @ FENCE INT. 65.25 S89-51-47E 65.25 TO 1' PIPE @ S 1/4 COR SEC 33. S 1/4 COR SEC 33 IS 1.8' SOUTH OF FENCE INT. N89-51-47W 2580.36 TO PIPE @ SW COR SEC 33. SO-04-19E 2543.166 TO FD 1/2 REBAR @ GEN OF SEC 4.

FD CUT LIMESTONE SPLIT LENGTH WISE. 0.1' BELOW GRADE. FD PIPE @ S 1/4 COR SEC 33.

C) Was the corner restored through acceptance of (1) an obliterated evidence location, or, (2) a found perpetuated location?

ACCEPTED FD CUT LIMESTONE. DID NOT ACCEPT S 1/4 COR SEC 33. THE DISTANCE IS NOT IN HARMONY WITH RUGER'S RECORD DISTANCE OF 63.52' AND RECORDS IN THIS COURT HOUSE DOES NOT SHOW HOW OR WHO PLACED THE PIPE.

J. D. Smith
Seal
Barnes
Nov 9, 2011

SHEET 1 OF 3

CORNER CODE **A-11**

UN506

N1/4CORSEC4

D) Describe any material discrepancy between the location of the corner as restored or reestablished and the location of that corner as previously restored or reestablished by distance and direction. Show the discrepancy on the plan view drawing under (a), above. Show the distances between the corner as previously restored or reestablished and (1) the corner as restored or reestablished, and (2) to at least 4 of the witness monuments shown on the drawing in (a), above.

NONE

(E) Was the corner reestablished through lost corner proportionate methods? If so, show the method, including the directions and distances to other public land survey corners used as evidence or used for proportioning the corner location.

NO. THE CORNER WAS NOT ESTABLISHED BY THE ORIGINAL GOVERNMENT SURVEYOR. RUGER ESTABLISHED THE CORNER MIDWAY BETWEEN THE NW & NE CORNERS OF SEC 4.

I, **Donald Barnes**, hereby certify that the corner location as identified by the corner code index was determined by me under my direction and control and that this U.S. Public Land Survey Monument Record is correct and complete to the best of my knowledge and belief.

Donald Barnes
NW 9, 2011

SHEET 2 OF 3

CORNER CODE A-1 1

A.E. 7.08 REQUIREMENT

SEC 33
T5N R10E

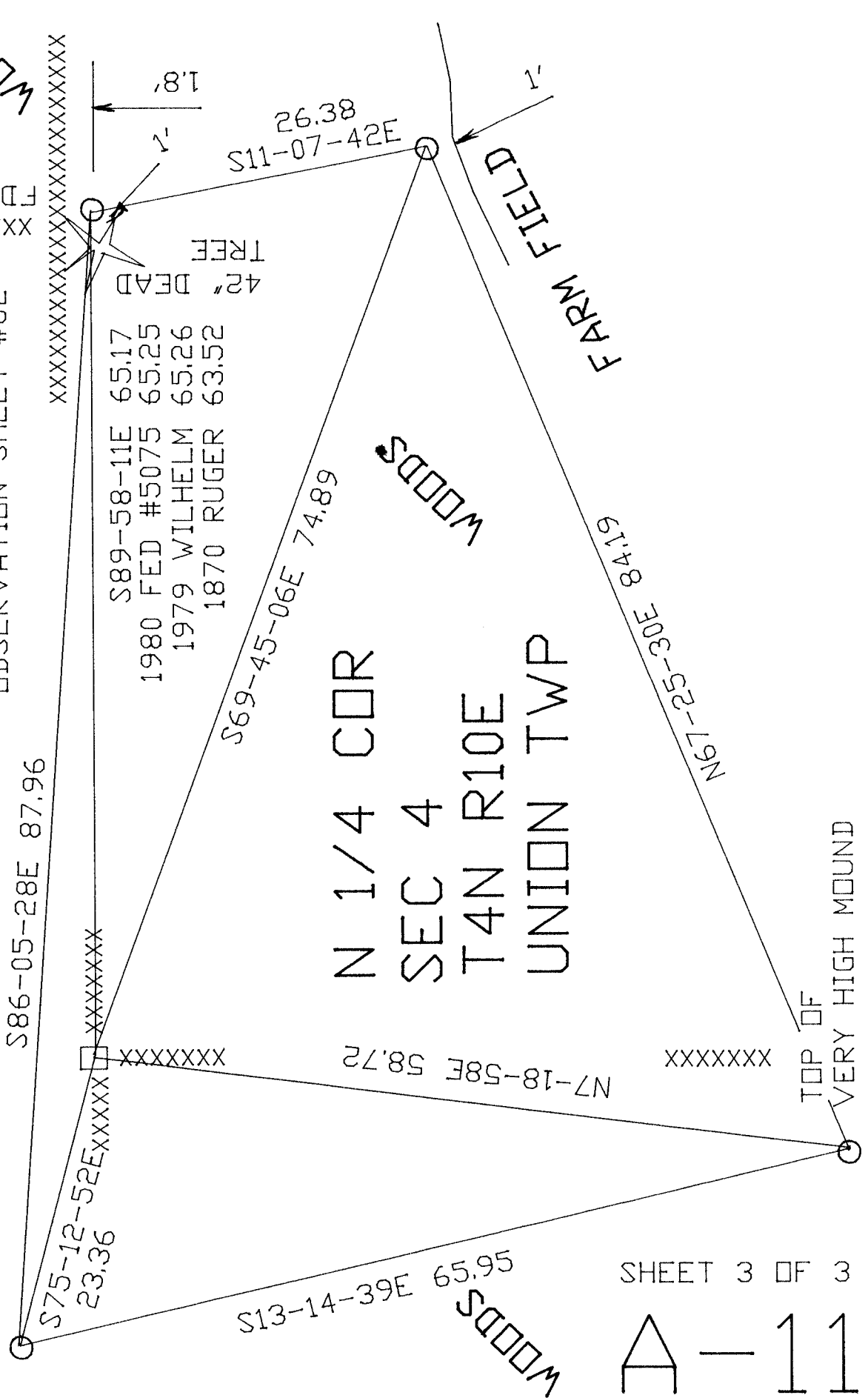
N 1/4 COR
FD CUT LIMESTONE
SPLIT LENGTHWISE

O 1/2X24 REROD

OBSERVATION SHEET #62

EMBOSSED SEAL

Barne
NOV 9, 2011



SHEET 3 OF 3

A-11