

U.S. PUBLIC LAND SURVEY MONUMENT RECORD

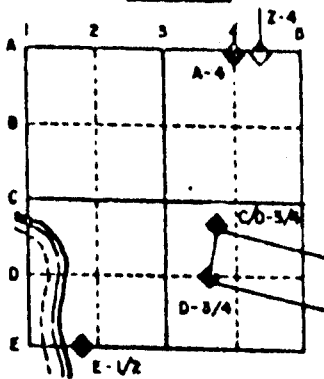
For Public Land Survey Corners in the
T. A. N., R. 10. E.

CORNER CODE INDEX

	1	2	3	4	5	6	7	8	9	10	11	12	13	14	15	16	17	18	19	20	21	22	23	24	25
A																									
B																									
C	6																								
D		5																							
E			4																						
F				3																					
G					2																				
H																									
I	7																								
J		8																							
K			9																						
L				10																					
M					11																				
N						12																			
O							13																		
P								14																	
Q									15																
R										16															
S											17														
T												18													
U													19												
V														20											
W															21										
X																22									
Y																	23								
Z																		24							
																			25						
																				26					
																					27				
																						28			
																							29		
																								30	
																									31
																									32
																									33
																									34
																									35
																									36

PLACE MONUMENT SYMBOL (◆) AT PROPER LOCATION ON ABOVE INDEX

EXAMPLE



UNION TWP
ROCK COUNTY WI

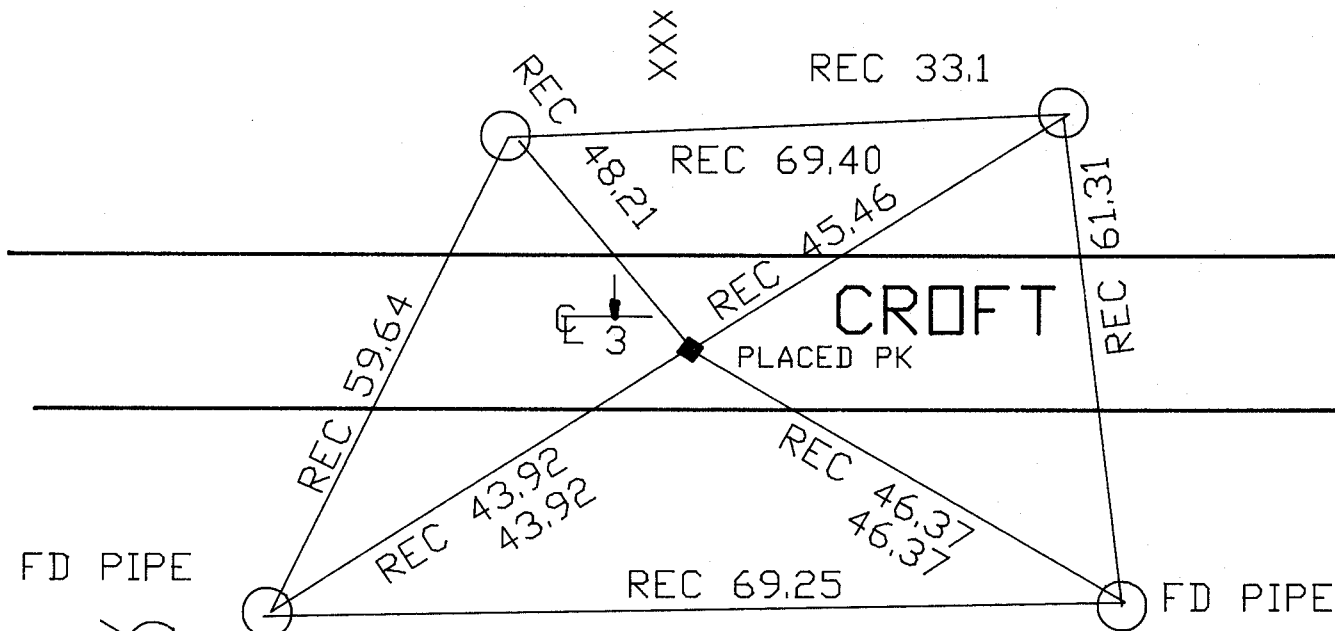
IF AVAILABLE
STATE PLANE COORDINATES

North (Y) _____ Eleve. (Z) _____
 East (X) _____ Zone _____
 Hor. Datum _____ Vert. Datum _____

◆ CORNER MONUMENT

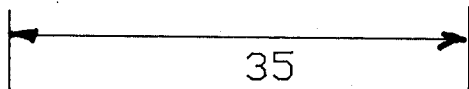
○ WITNESS MONUMENT

BEARINGS ARE BASED ON: ASSUMED



<XX>

FIELD BOOK #2 PG 29
OLD TIES VOL 4 PG 150



MICROFILMED

SHEET _____ OF _____

CORNER CODE: X 11

(B) Describe any record evidence, monument evidence, occupational evidence, testimonial evidence or any other material evidence you considered, and whether the monument was found or placed.

1906 KERCH VOL 3 PG 36 DROVE GAS PIPE 1 1/2X24" AT CENTER OF SECTION 33. SHOWS 2615.5 TO WEST QUARTER CORNER OF SECTION 33.

1963 BATTERMAN JR. VOL 4 PG 150 PLACED CENTER ON LINE BETWEEN THE 1/4 CORNERS AND REFERENCED SAME. METAL CULVERT ACROSS THE ROAD AT THE CENTER PREVENTED THE SETTING OF A MONUMENT.

FOUND SE AND SW REFERENCE PIPES. PLACED PK. PK IS OVER METAL CULVERT AND 3' SOUTH OF THE CENTER OF THE PAVEMENT.

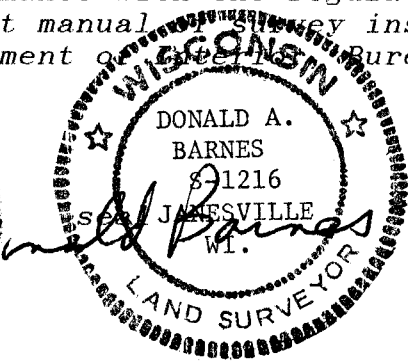
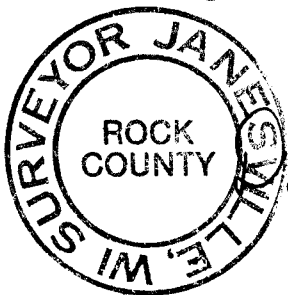
C) Was the corner restored through acceptance of (1) an obliterated evidence location, or, (2) a found perpetuated location?

DID NOT ACCEPT NOR REJECT CORNER AS ESTABLISHED BY BATTERMAN JR. JUST PLACING INFORMATION ON RECORD TO PRESERVE THE LOCATION THAT BATTERMAN JR. ESTABLISHED.

D) Describe any material discrepancy between the location of the corner as restored or reestablished and the location of that corner as previously restored or reestablished by distance and direction. Show the discrepancy on the plan view drawing under (a), above. Show the distances between the corner as previously restored or reestablished and (1) the corner as restored or reestablished, and (2) to at least 4 of the witness monuments shown on the drawing in (a), above.

(E) Was the corner reestablished through lost corner proportionate methods? If so, show the method, including the directions and distances to other public land survey corners used as evidence or used for proportioning the corner location.

I, Donald Barnes, hereby certify that the corner points as identified by the corner code index were, in a field survey on, JULY 30 1991, established, re-established, monumented, re-monumented, recovered or restored as expressed below and in conformance with the regulations and rules as required in the current manual survey instructions of the United States Department of the Interior Bureau of Land Management.



COUNTY SURVEYOR FILING DATA

Date of computer entry _____

Date microfilmed _____

Number of included sheets _____
CORNER CODE

AFFIX YOUR LAND SURVEYOR SEAL

X 11