

Paper weight-110# (minimum)

ack nonfading ink required

U.S. PUBLIC LAND SURVEY MONUMENT RECORD

For Public Land Survey Corners In:

WI ADMINISTRATIVE CODE A-E 7.08 REQUIREMENT

T. 4 N. R. 10 E. 4th P.M.

REV 10/23/2004

USMONREC.DWG

CORNER CODE INDEX

UNION TWP

ROCK COUNTY WI

IF AVAILABLE

ROCK COUNTY COORDINATES PREFERRED

	1	2	3	4	5	6	7	8	9	10	11	12	13	14	15	16	17	18	19	20	21	22	23	24	25		
A																											A
B																											B
C																											C
D																											D
E																											E
F																											F
G																											G
H																											H
J																											J
K																											K
L																											L
M																											M
N																											N
O																											O
P																											P
Q																											Q
R																											R
S																											S
T																											T
U																											U
V																											V
W																											W
X																											X
Y																											Y
Z																											Z

North _____ Elev. _____

East _____

Hor. Datum _____ Vert. Datum _____

LATITUDE _____ ELLIPS. HT. _____

LONGITUDE _____

NAD83(91) _____ NETWORK ADJ. YR 2010

GPS (X) _____ TRAVERSE (X) X

BASED ON THE FOLLOWING CONTROL:

1 2 3 4 5 6 7 8 9 10 11 12 13 14 15 16 17 18 19 20 21 22 23 24 25
PLACE MONUMENT SYMBOL AT PROPER LOCATION ON ABOVE INDEX

CORNER MONUMENT

WITNESS MONUMENT

(a)

BEARINGS ARE BASED ON: ROCK COUNTY PROJECTION

FIELD BOOK _____ PAGE # _____

OR OBSERVATION SHEET _____

SHEET 1 OF 3

SHOW A PLAN VIEW DRAWING DEPICTING THE CORNER MONUMENT AND SURROUNDING PHYSICAL FEATURES, INCLUDING THE EXCAVATION AREA AND DEPTH.

PLANNING & ZONING COMMITTEE ADOPTED THIS FORM ON 12/2/1982

CORNER CODE V-11

UN606 S1/4CORSEC28

(B) Describe any record evidence, monument evidence, occupational evidence, testimonial evidence or any other material evidence you considered, and whether the monument was found or placed.

- 1833 HARRISON T4N R10E 4TH MER EAST BET. SECS 28 & 33
2640.00 TEMPY 1/4 SEC COR
5256.24 INT E BDY 11.22 N OF P
LAND ROLLING 2ND RATE TIMBER ALL BURR
O
WEST COR WEST BET SECS 28 & 33
2614.92 QUARTER SEC COR {BURR O 12 S63W 40.92';
BURR O 18 N61E 33.66' BURR O 12 & BURR O
18} MARKED
5256.24 SEC COR
- 1870 RUGER AUG REMON-77 EAST ON SOUTH LINE OF SW 1/4
SEC 28 ON A VAR 6-50 OFFSET NORTH 12.54'
AT
2623.67 INTERSECTED QUARTER LINE 15.18' NORTH OF
QUARTER CORNER. FD OLD STAKE IN CORNER.
ALSO FD STUMP OF EAST BEARING TREE. COR
VAR 6-46
EAST ON SOUTH LINE OF SE 1/4 SEC 28 ON A
VAR 7-40 OFFSET NORTH 7.26'; OFFSET SOUTH
36.08' OFFSET NORTH 27.88' AT
2666.40 INTERSECTED EAST BOUNDARY LINE 24.42'
NORTH OF CORNER. COR VAR 7-10
- 1906 KERCH VOL 3 PG 36 FD MON. USED TO SUBDIVIDE SEC 33.
2628.8X TO NW COR SEC 33
- 1960 BATTERMAN VOL 4 PG 42 FD CUT STONE MON. 1335.28 TO
SW COR OF THE E 1/2 OF THE SE 1/4 SEC 28 & 2670.56 TO
CUT STONE @ SE COR SEC 28
- 1960 BATTERMAN #6391 FD CUT STONE MON. S89-38-00E
2670.56 TO FD CUT STONE @ SE COR SEC 28, S89-38-00E
1335.28 TO SET 1" PIPE @ 1/16TH COR IN FIFTH ST.
- 1960 BATTERMAN MC EWEN & PULLEN'S ADDITION TO EVANSVILLE"
#8280, #2196, & 10024 FD CUT STONE MON S89-38-00E
2670.56 TO CUT LS @ SE COR SEC 28
- 1963 BATTERMAN VOL 4 PG 150 & #6982 FD BROKEN CUT STONE
& WEST OF N/S FENCE & ON LINE WITH E/W FENCE TO THE
EAST.
- 1966 BATTERMAN VOL 4 PG 289 STATES NOTHING ABOUT MON.
2670.56 TO SE COR SEC 28.
- 1966 THOM BK 23 PG 19 "DARWOOD ADD" FD CUT STONE.
EASTERLY 1335.28 TO SET PIPE. 2670.56 TO CUT STONE @
SE COR SEC 28
- 1969 JENSEN ASSESSORS PLAT SHEET 6 SUB #2183 STONE @ N
1/4 COR SEC 28. EASTERLY 1321.00 TO FD PIPE (2.08 W &
0.27N) THENCE EASTERLY 1321.12 TO STONE @ NE COR
SEC 28. FROM N 1/4 COR SEC 28 SOUTHERLY 1336.05 TO
SET PIPE (4' N & 12' E OF FD COR.) THENCE SO-28E 1336.05
TO CONC. MON. @ CENTER OF SEC 28; THENCE SOUTHERLY
139.53 TO PIPE. USED STONE @ S 1/4 COR SEC 28 FOR
LINE.
- 1967 BATTERMAN VOL 4 PG 325 FD CUT STONE & PIPES ALONG
SEC LINE TO SE COR SEC 28. 2670.56 TO SE COR SEC 28
- 1974 LEE BK 27 PG 4 MAY SOUTH ADDITION. CUT LS. 2670.82 TO
CUT LS @ SE COR SEC 28
- 1974 LEE BK 26 PG 27 MAY NORTH ADDITION. FD CUT STONE @ S
1/4 COR SEC 28 N89-49-30E 1335.28 TO 1/16TH COR;
THENCE N0-32W 1334.87 TO 1/16TH COR.
- 1977 LEE CSM VOL 7 PG 72 BROKEN CUT LS. S0-31-40E 2660.04
TO PK @ CENTER OF SEC 33.
- 1979 KIENBAUM VOL 5 PG 523 FD BROKEN STONE.
- 1979 BARNES VOL 5 PG 535 FD BROKEN CUT LIMESTONE.
REPLACED WITH ALUM. MON. @ FENCE INT.

SHEET 1 OF 3

CORNER CODE V-11

Ronald Barnes
4/09/2012

UN606 S1/4CORSEC28

1986 COMBS CSM VOL 12 PG 351 STONE S89-37-15E 1335.28 TOWARDS A STONE @ NE COR SEC 33. FROM 1/16TH COR SO-16-25W 659.94

1986 COMBS CSM VOL 12 PG 353 STONE @ N 1/4 COR SEC 33 & NE COR SEC 33

1987 COMBS CSM VOL 13 PG 56 LS USED FOR LINE FROM NE COR SEC 33

1987 COMBS BK 32 PG 45 JUDD ESTATES REPLAT" FD LS @ S 1/4 & SE COR SEC 28 N89-49-30E 2670.82 TO SE COR SEC 28. N89-49-30E 1335.28 TO 1/16TH COR; THENCE FROM 1/16TH COR NO-32W 1334.87

1988 COMBS CSM VOL 13 PG 382 FD LS @ S 1/4 & SE COR SEC 28.

1990 COMBS BK 32 PG 75 THE GROVE" FD LS 271.16 TO LS @ SE COR SEC 28.

1992 COMBS BK 32 PG 125 ABEY ACRES LS. L.S. SO-02W TO PK @ CENTER OF SEC 33. CENTER OF 33 TO E 1/4 COR SEC 33 IS S89-27-20E

1993 COMBS BK 32 PG 154 THE GROVE FIRST ADDITION. FD LS 2671.16 TO LS @ SE COR SEC 28

1996 DALSING BK 32 PG 309 ABEY-KOTH SUBDIVISION. STONE. SO-01-51E 2659.36 TO FD PK @ CENTER OF SEC 33 & S89-40-32E 1329.23 TO 1/16TH COR. STONE IS LOT COR. S89-40-32E 186.65 TO LOT COR & SO-01-51W 187.96 TO LOT COR. NEAR SUNSET CT

2003 COMBS BK 32 PG 587 BERG WOODWORTH & PETERSON SUBDIVISION" ALUM. NO-28-25W 1335.83 TO 1/16TH COR. & N89-48-15W 2628.83 TO LS @ SW COR SEC 28

2003 DALSING CSM VOL 26 PG 81 STONE MON 2659.36 TO FD PK @ CENTER OF SEC 33.

2004 COMBS CSM VOL 27 PG 266 ALUM. MON. NO-28-25W 1335.83 TO 1/16TH COR. & N89-48-15W 2628.83 TO LS @ SW COR SEC 28

2004 COMBS BK 32 PG 666 BERG WOODWORTH & PETERSON SUB. FIRST ADD." ALUM. N89-48-15W 2628.83 TO LS @ SW COR SEC 28 & NO-51-24E 2151.05

2006 COMBS BK 32 PG 778 WESTFIELD MEADOWS" STATES NOTHING ABOUT MON. S89-48-15W 2628.83 TO LS @ NW COR SEC 33

2007 COMBS #15728 FD ALUM. MON. NO-25-25W 1335.83 TO 1/16TH COR.

FD ALUM. MON WITH CARSONITE 1.5' TO THE EAST. THE FD LOT CORNER MONUMENTS DO NOT CHECK WITH PLATTED DISTANCES.

C) Was the corner restored through acceptance of (1) an obliterated evidence location, or, (2) a found perpetuated location?
ACCEPTED THE FD ALUM. WHICH PERPETUATED THE CUT LIMESTONE.

D) Describe any material discrepancy between the location of the corner as restored or reestablished and the location of that corner as previously restored or reestablished by distance and direction. Show the discrepancy on the plan view drawing under (a), above. Show the distances between the corner as previously restored or reestablished and (1) the corner as restored or reestablished, and (2) to at least 4 of the witness monuments shown on the drawing in (a), above.

(E) Was the corner reestablished through lost corner proportionate methods? If so, show the method, including the directions and distances to other public land survey corners used as evidence or used for proportioning the corner location.

I, Donald Barnes, hereby certify that the corner location as identified by the corner code index was determined by me under my direction and control and that this U.S. Public Land Survey Monument Record is correct and complete to the best of my knowledge and belief.

SHEET 2 OF 3

CORNER CODE V-11

Donald Barnes

A.E. 7.08 REQUIREMENT

4/09/2012

Donald Barnes
4-09/2012

N19-01-54E
OLD BLUE STAND PIPE
4,494'

OBSERVATION SHEET #606

NOT TO SCALE

○ FD 3/4 PIN

⊙ 1 1/4 PIN FD

N 1/4 COR
SEC 33
UNION TWP
T4N R10E

REC S89-52-18E 382.60
S89-40-32E 382.36

REC S89-5218E 292.74
S89-40-32E 293.36

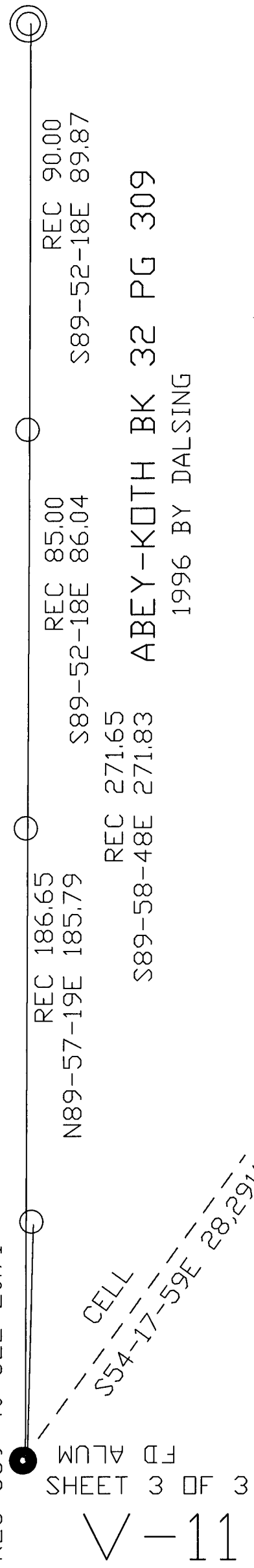
REC S89-52-18E 206.70
S89-40-32E 207.36

REC S88-23-49E 20.92
S89-40-32E 20.71

SHEET 3 OF 3
ALCM
FD

CELL

S54-17-59E 28,291'



REC 186.65
N89-57-19E 185.79

REC 271.65
S89-58-48E 271.83

REC 85.00
S89-52-18E 86.04

ABEY-KOTH BK 32 PG 309
1996 BY DALISING

REC 90.00
S89-52-18E 89.87

SUNSET COURT

SIXTH ST