

Paper weight-110# (minimum)

Black nonfading ink required

# U.S. PUBLIC LAND SURVEY MONUMENT RECORD

For Public Land Survey Corners In:  
T. 4 N. R. 10 E. 4th P.M.  
CORNER CODE INDEX

WI ADMINISTRATIVE CODE A-E 7.08 REQUIREMENT  
REV 10/23/2004 USMONREC.DWG

UNION TWP

ROCK COUNTY WI

IF AVAILABLE  
ROCK COUNTY COORDINATES PREFERRED

A	1	2	3	4	5	6	7	8	9	10	11	12	13	14	15	16	17	18	19	20	21	22	23	24	25	A
B			6				5					4				3				2				1		B
C																										C
D																										D
E																										E
F																										F
G																										G
H																										H
J																										J
K																										K
L																										L
M																										M
N																										N
O																										O
P																										P
Q																										Q
R																										R
S																										S
T																										T
U																										U
V																										V
W																										W
X																										X
Y																										Y
Z																										Z

PLACE MONUMENT SYMBOL  AT PROPER LOCATION ON ABOVE INDEX

North \_\_\_\_\_ Elev. \_\_\_\_\_

East \_\_\_\_\_

Hor. Datum \_\_\_\_\_ Vert. Datum \_\_\_\_\_

LATITUDE \_\_\_\_\_ ELLIPS. HT. \_\_\_\_\_

LONGITUDE \_\_\_\_\_

NAD83(91) \_\_\_\_\_ NETWORK ADJ. YR 2010 \_\_\_\_\_

GPS (X) \_\_\_\_\_ TRAVERSE (X)

BASED ON THE FOLLOWING CONTROL:

CORNER MONUMENT

WITNESS MONUMENT

(a)

ROCK COUNTY PROJECTION  
BEARINGS ARE BASED ON: \_\_\_\_\_

FIELD BOOK \_\_\_\_\_ PAGE # \_\_\_\_\_  
OR OBSERVATION SHEET \_\_\_\_\_

SHEET 1 OF 3

SHOW A PLAN VIEW DRAWING DEPICTING THE CORNER MONUMENT AND SURROUNDING PHYSICAL FEATURES, INCLUDING THE EXCAVATION AREA AND DEPTH.

PLANNING & ZONING COMMITTEE ADOPTED THIS FORM ON 12/2/1982

CORNER CODE z-23

UN632 S1/4CORSEC36

(B) Describe any record evidence, monument evidence, occupational evidence, testimonial evidence or any other material evidence you considered, and whether the monument was found or placed.

1833 (SEP 5-12?) BRINK & MULLETT T4N R10E VAR 8-15E  
WEST PM ON SOUTH SIDE OF SECTION 36  
(PG 107)

2640.00 SET QUARTER SECTION POST IN PRAIRIE AND  
MADE A MOUND

4554.0 LEAVE PRAIRIE

5280.0 SET POST FOR CORNER TO SECTIONS 35 & 36  
BUR OAK 16 N44W 145.2'; BUR OAK 12 N37  
12E 25.08'

LAND LEVEL SECOND RATE PRAIRIE LOW  
WILLOW GRASS G? & @ WEST OF PRAIRIE BURR  
OAK & RED ROOT GRASS

1855 CHURCH VOL 1 PG 47 STATES NOTHING ABOUT MON.  
1311.75 TO N 1/16TH COR OF NE 1/4 OF SEC 1 MAGNOLIA  
TWP, 2557.50 TO N 1/4 COR SEC 1, 1209.12 TO E 1/16TH  
COR OF NE 1/4 SEC 1, 2529.12 TO E 1/4 COR SEC 1. @ N  
1/4 COR SEC 1 FD POST IN MOUND.

1867 LOCKE VOL 1 PG 301 & #5277 SE COR SEC 36 UNION TWP  
FD STAKE IN END OF DITCH RUNNING EAST. SET BR. OAK  
STAKE IN MOUND. VAR 7-55' 2650.56 TO E 1/4 COR SEC 36,  
VAR 6-55 2621.19 TO S 1/4 COR SEC 36. S 1/4 COR SEC  
36 DECLARED LOST SET IT FROM SEC CORNERS SET BR.  
OAK STAKE WITH SMALL HARDHEAD ON N & S IN MOUND  
(MID POINT & ON LINE). VAR 7-35 2648.58 TO CENTER OF  
SEC 36 & VAR 7-35 5295.18 TO N 1/4 COR SEC 36

1870 RUGER AUG REMON-61 EAST ON SOUTH LINE OF SW 1/4 SEC  
36 ON A VAR 6-50 OFFSET NORTH 7.92' AT  
2626.8 INTERSECTED QUARTER LINE 16.5' NORTH OF  
QUARTER CORNER, FOUND STAKE SET BY  
LOCKE AT COR.  
COR VAR 6-39

EAST ON SOUTH LINE OF SE 1/4 SEC 36  
ON A VAR 6-10 OFFSET SOUTH 1.98' AT

2625.15 INTERSECTED EAST BOUNDARY LINE 6.6'  
SOUTH OF CORNER. FOUND STAKE SET BY  
LOCKE AT CORNER. COR. VAR 6-16

1980 BARNES VOL 6 PG 27 277,303.7X; 2,198,858.9X. N89-  
36-39W 2626.51 TO CUT LS @ SW COR SEC 36, NO-12-  
35W 5313.79 TO N 1/4 COR SEC 36

1980 BARNES VOL 6 PG 34 DUG 3' DEEP FD AREA DISTURBED  
BY DITCHING. FD 2 LARGE PIECES OF LIMESTONE LAYING  
HORIZONTALLY. COULD BE PART OF CUT LIMESTONE.  
ALSO FD OLD FENCE INTERSECTION 2' DEEP. SET ALUM  
MON. THERE. THIS IN HARMONY WITH OCCUPATION LINES  
AND RUGER'S REMONUMENTATION NOTES. REF. SAME.  
MON. IS ON WEST SIDE OF WEARY RD.

1993 SCHROEDER CSM 16 PG 269 USED N 1/4 COR SEC 1  
MAGNOLIA TWP BUT STATES NOTHING ABOUT MON. SURVEY  
IN SEC 1.

1994 BARNES VOL 6 PG 440 FD ALUM. S89-51-41E 2627.19 TO  
SE COR SEC 36, N89-36-51W 2626.51 TO SW COR SEC  
36, NO-12-30W 2661.50 TO CEN OF SEC 36, NO-12-30W  
5313.77 TO N 1/4 COR SEC 36, SO-01-38W 2413.68 TO  
CENTER OF SEC 1, & 5062.62 TO S 1/4 COR SEC 1

1994 KARNS CSM VOL 17 PG 242 ALUM 5316.80 TO LS @ N  
1/4 COR SEC 36

1997 COMBS CSM VOL 20 PG 88 ALUM 5314.27 TO LS @ N 1/4  
COR SEC 36

1998 KNUDSON #8178 FD SQUARE STONE. NO-18-48W  
5313.73 TO SQUARE STONE @ S 1/4 COR SEC 25

SHEET 1 OF 3

Seal  
Barnes

CORNER CODE Z-23

OCT 26, 2011

UN632 S1/4CORSEC36

1999 KNUDSON #7227 REPEAT OF 1998 #8178  
2004 COMBS CSM VOL 27 PG 217 ALUM. 5313.74 TO LS @  
N 1/4 COR SEC 36

ACCEPTED MY 1980 MONUMENTS & TIES. USED MY RECORD  
OBSERVATIONS.

C) Was the corner restored through acceptance of (1) an obliterated evidence location, or, (2) a found  
perpetuated location?

ACCEPTED MY RECORD MONUMENTS.

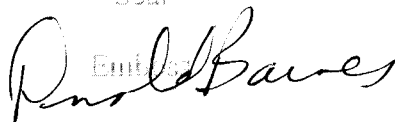
D) Describe any material discrepancy between the location of the corner as restored or reestablished  
and the location of that corner as previously restored or reestablished by distance and direction. Show  
the discrepancy on the plan view drawing under (a), above. Show the distances between the corner as  
previously restored or reestablished and (1) the corner as restored or reestablished, and (2) to at least 4  
of the witness monuments shown on the drawing in (a), above.

NONE

(E) Was the corner reestablished through lost corner proportionate methods? If so, show the method,  
including the directions and distances to other public land survey corners used as evidence or used for  
proportioning the corner location.

IN 1867 LOCKE (VOL 1 PG 301) DECLARED THE CORNER LOST &  
ESTABLISHED IT ON LINE WITH SW & SE CORNERS OF SEC 36 AT MID  
POINT.

I, **Donald Barnes**, hereby certify that the corner location as identified by the corner code index  
was determined by me under my direction and control and that this U.S. Public Land Survey  
Monument Record is correct and complete to the best of my knowledge and belief.

Seal  
Emilio  
  
OCT 20, 2011

SHEET 2 OF 3

CORNER CODE **Z-23**

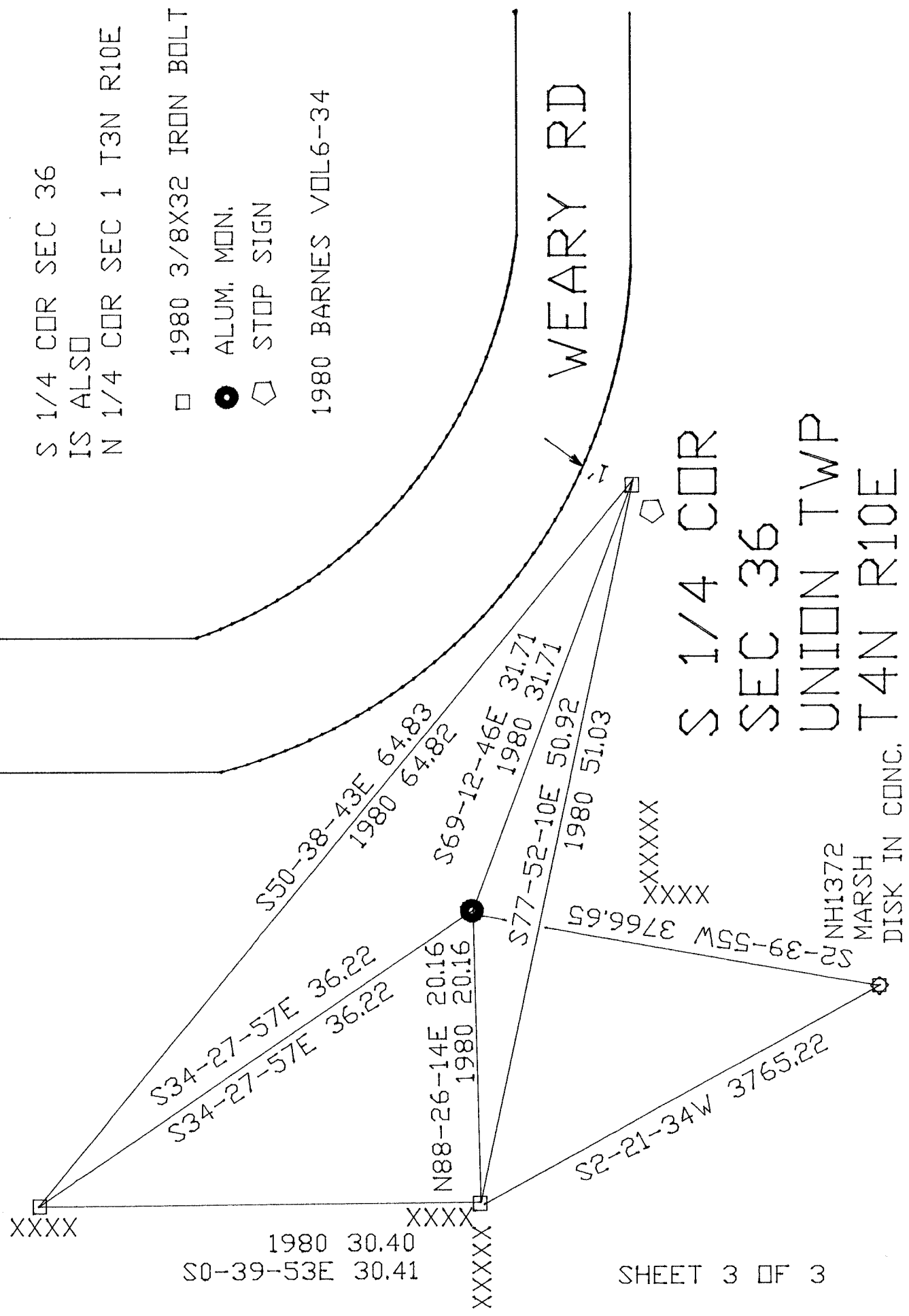
A.E. 7.08 REQUIREMENT

S 1/4 COR SEC 36  
 IS ALSO  
 N 1/4 COR SEC 1 T3N R10E

- 1980 3/8X32 IRON BOLT
  - ALUM. MON.
  - ◇ STOP SIGN
- 1980 BARNES VOL6-34

WEARY RD

S 1/4 COR  
 SEC 36  
 UNION TWP  
 T4N R10E



1980 30.40  
 S0-39-53E 30.41

SHEET 3 OF 3

EMBOSSED  
 SEAL  
*Donald Barnes*  
 OCT 20, 2011

Z-23