

Paper weight-110# (minimum)

Black nonfading ink required

U.S. PUBLIC LAND SURVEY MONUMENT RECORD

For Public Land Survey Corners In:
T. 4 N. R. 10 E. 4th P.M.
CORNER CODE INDEX

WI ADMINISTRATIVE CODE A-E 7.08 REQUIREMENT
REV 10/23/2004 USMONREC.DWG

UNION TWP
ROCK COUNTY WI

IF AVAILABLE
ROCK COUNTY COORDINATES PREFERRED

A	1	2	3	4	5	6	7	8	9	10	11	12	13	14	15	16	17	18	19	20	21	22	23	24	25	A
B		6					5					4					3				2				1	B
C																										C
D																										D
E																										E
F																										F
G																										G
H																										H
J																										J
K																										K
L																										L
M																										M
N																										N
O																										O
P																										P
Q																										Q
R																										R
S																										S
T																										T
U																										U
V																										V
W																										W
X																										X
Y																										Y
Z																										Z

North _____ Elev. _____

East _____

Hor. Datum _____ Vert. Datum _____

LATITUDE _____ ELLIPS. HT. _____

LONGITUDE _____

NAD83(91) _____ NETWORK ADJ. YR 2010

GPS (X) _____ TRAVERSE (X) X

BASED ON THE FOLLOWING CONTROL:

PLACE MONUMENT SYMBOL AT PROPER LOCATION ON ABOVE INDEX

CORNER MONUMENT

WITNESS MONUMENT

BEARINGS ARE BASED ON: ROCK COUNTY PROJECTION

FIELD BOOK _____ PAGE # _____
OR OBSERVATION SHEET _____

SHEET 1 OF 3

SHOW A PLAN VIEW DRAWING DEPICTING THE CORNER MONUMENT AND SURROUNDING PHYSICAL FEATURES, INCLUDING THE EXCAVATION AREA AND DEPTH.

PLANNING & ZONING COMMITTEE ADOPTED THIS FORM ON 12/2/1982

CORNER CODE V-23

UN612 N1/4CORSEC36

(B) Describe any record evidence, monument evidence, occupational evidence, testimonial evidence or any other material evidence you considered, and whether the monument was found or placed.

- 1833 HARRISON NOV 5 EAST ON A RAND. BET 25 &
36 T4N R10E
2640.0 LEAVE PRAIRIE & SET TEMPY 1/4 COR POST
5204.10 INT. EAST BNDY 49.5' NORTH OF POST 1ST 1/2
LEVEL 1ST RATE PRAIRIE 2ND 1/2 LEVEL 1ST RATE
WOOD LAND WITH BURR OAK TIMBER NO
UNDERGROWTH
WEST COR. WEST
2602.05 QUARTER SEC COR
{BURR OAK 18 S41E 66.0'; BUR OAK 12 N4E
63.36'} {BURR OAK 18; BURR OAK 12} MARKED
5204.10 SEC COR
- 1865 LOCKE VOL 1 PG 233 8 TREES ENTIRELY GONE. USED TO
SUBDIVIDE SEC 25.
- 1867 LOCKE VOL 1 PG 301 & #5277 COR LOST. SET STAKE (FROM
CORNERS OF SEC) WITH HH ON N,S,E, & W IN MOUND. VAR
7-00 2612.28 TO NE & NW CORNERS OF SEC 36, VAR 7-35
2646.60 TO CENTER OF SEC 36, VAR 7-35 5295.18 TO S
1/4 COR SEC 36.
- 1870 RUGER AUG RENON-59 WEST ON NORTH LINE OF NE 1/4 OF
SEC 36 ON A VAR 6-15 OFFSET SOUTH 21.95' AT
2619.54 FELL 3.3' SOUTH OF QUARTER CORNER
ESTABLISHED BY LOCKE. HIS RECORD OF SAID
SURVEY IN COUNTY SURVEYOR'S RECORD
BOOK. SHOWS THAT HE ESTABLISHED SAID
QUARTER COR. AT A POINT IN A TRUE LINE
BETWEEN AND EQUI-DISTANT FROM THE NE AND
NW CORNERS OF SAID SECTION. THE QUARTER
COR. ESTABLISHED BY THE UNITED STATES
SURVEYOR HAVING BEEN DESTROYED. I
SEARCHED FOR THE QUARTER CORNER. AS
ESTABLISHED IN THE UNITED STATES SURVEY,
BUT COULD FIND NO TRACE OF IT OR OF THE
BEARING TREES, AND I WAS INFORMED BY
CREDIBLE PARTIES CONVERSANT WITH THE
FACTS, THAT THE ORIGINAL QUARTER CORNER
HAD BY MISTAKE BEEN LOCATED CONSIDRABLY
TOO FAR TO THE EAST, AND THAT IT AND THE
BEARING TREES HAD BEEN PURPOSILY
REMOVED AND ALL TRACES OF THEM
DESTROYED SEVERAL YEARS BEFORE.
CONTINUED WEST ON A VAR 6-39 OFFSET
SOUTH 12.54' AT
5239.08 INTERSECTED WEST BOUNDARY LINE 12.54'
SOUTH OF COR. FOUND OLD STAKE AND
STUMPS OF NW BEARING TREE AND REMAINS OF
STUMP OF SW BEARING TREE.
ESTABLISHED THE NORTH QUARTER CORNER OF
SECTION 36 IN A TRUE LINE BETWEEN AND AT A
POINT EQUI-DISTANT FROM THE NE & NW
CORNERS OF SAID SECTION. IT BEING DISTANT
FROM EACH 2619.54 AND IN THE SAME PLACE
AS ESTABLISHED BY LOCKE. CORRECTED
VARIATION ON NORTH LINE OF SECTION 36 6-39
- 1967 BATTERMAN VOL 4 PG 297 RESET MON. 15" BELOW
SURFACE AS FIELD FENCE HAS BEEN MOVED. REF SAME.
WEST OF WEARY RD.

Seal

Engr
Arnold Barnes

Dec 23, 2011

SHEET 1 OF 3

CORNER CODE V-23

UN612 N1/4CORSEC36

- 1980 SCHROEDER CSM VOL 9 PG 315 STATES NOTHING ABOUT MON. FROM N/S 1/4 LINE OF SEC 36 ANGLE LEFT 90-50 47.0 TO PK
- 1980 BARNES VOL 6 PG 27 & FB#1 PG 57. FD CUT LIMESTONE 1' DEEP. 282,617.4X; 2,198,783.6X, S89-46-15E 2618.53 TO FD CUT L.S. @ NE COR SEC 36, N89-47-34W 2619.50 TO FD CUT L.S. @ NW COR SEC 36, S0-12-35E 5313.79 TO S 1/4 COR SEC 36. @ N 1/4 COR SEC 36 PLACED 2X24 PIPE HORIZONTALLY ON NORTH SIDE OF CUT LIMESTONE.
- 1980 BARNES VOL 6 PG 34 FD CUT STONE 47' WEST OF PVMT CENTER. REFERENCED SAME. LAT 42-46-22 LONG 89-15-35
- 1998 KNUDSON #8178 FD SQUARE STONE MON. N89-53-34W 2619.33 TO SQUARE STONE @ SW COR SEC 25, S0-18-48E 5313.73 TO SQUARE STONE @ S 1/4 COR SEC 36, N0-07-59W 5317.26 TO SQUARE STONE @ N 1/4 COR SEC 25
- 1994 BARNES VOL 6 PG 440 S89-46-10E 2618.53 TO NE COR SEC 36, N89-47-28W 2619.51 TO NW COR SEC 36, S0-12-30E 2652.27 TO CEN OF SEC 36, S0-12-30E 5313.77 TO S 1/4 COR SEC 36
- 1994 KARNS CSM VOL 17 PG 242 LS. 5316.80 TO ALUM @ S 1/4 COR SEC 36
- 1997 COMBS CSM VOL 20 PG 88 LS 5314.27 TO ALUM @ S 1/4 COR SEC 36.
- 1999 KNUDSON #7227 REPEAT OF 1998 #8178
- 2004 COMBS CSM VOL 27 PG 217 LS 5313.74 TO ALUM @ S 1/4 COR SEC 36
- 2005 COMBS BK 32 PG 698 GLACIER VALLEY ESTATES SECOND ADD. LS 2618.39 TO LS @ SE COR SEC 25

FD CUT L.S. 1.0' DEEP. PLACED 2 MAGNETS 0.2' BELOW TOP OF LS. ON THE EAST SIDE.

C) Was the corner restored through acceptance of (1) an obliterated evidence location, or, (2) a found perpetuated location?

ACCEPTED FD CUT LIMESTONE.

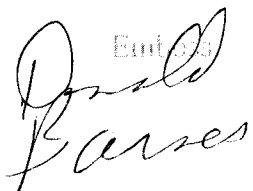
D) Describe any material discrepancy between the location of the corner as restored or reestablished and the location of that corner as previously restored or reestablished by distance and direction. Show the discrepancy on the plan view drawing under (a), above. Show the distances between the corner as previously restored or reestablished and (1) the corner as restored or reestablished, and (2) to at least 4 of the witness monuments shown on the drawing in (a), above. NONE

(E) Was the corner reestablished through lost corner proportionate methods? If so, show the method, including the directions and distances to other public land survey corners used as evidence or used for proportioning the corner location. YES BY RUGER.

I, **Donald Barnes**, hereby certify that the corner location as identified by the corner code index was determined by me under my direction and control and that this U.S. Public Land Survey Monument Record is correct and complete to the best of my knowledge and belief.

Soul

SHEET 2 OF 3


Donald Barnes

CORNER CODE V-23

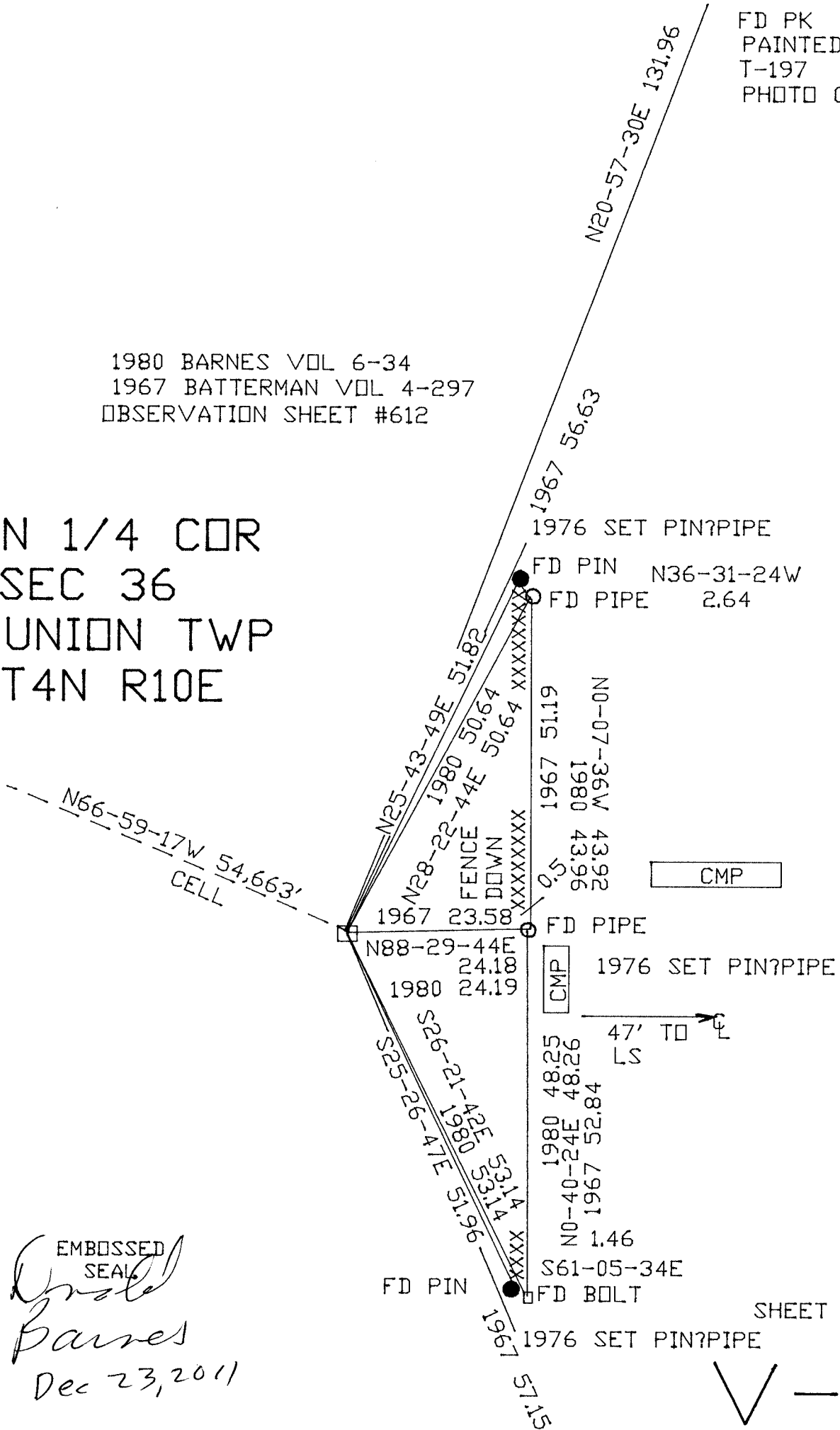
A.E. 7.08 REQUIREMENT

Dec 23, 2011

1980 BARNES VOL 6-34
1967 BATTERMAN VOL 4-297
OBSERVATION SHEET #612

N 1/4 COR
SEC 36
UNION TWP
T4N R10E

FD PK
PAINTED
T-197
PHOTO CP



EMBOSSSED SEAL
Dynal Barnes
Dec 23, 2011