

U.S. PUBLIC LAND SURVEY MONUMENT RECORD

For Public Land Survey Corners in the

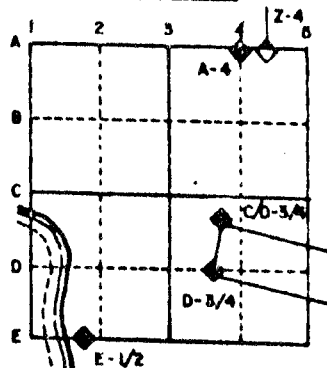
T. 4 N., R. 10 E.

CORNER CODE INDEX

| | | | | | | | | | | | | | | | | | | | | | | | | | |
|---|---|---|---|---|---|---|---|---|---|----|----|----|----|----|----|----|----|----|----|----|----|----|----|----|----|
| | 1 | 2 | 3 | 4 | 5 | 6 | 7 | 8 | 9 | 10 | 11 | 12 | 13 | 14 | 15 | 16 | 17 | 18 | 19 | 20 | 21 | 22 | 23 | 24 | 25 |
| A | | | | | | | | | | | | | | | | | | | | | | | | | |
| B | | | | | | | | | | | | | | | | | | | | | | | | | |
| C | | 6 | | | | | | | | | | | | | | | | | | | | | | | |
| D | | | 5 | | | | | | | | | | | | | | | | | | | | | | |
| E | | | | 4 | | | | | | | | | | | | | | | | | | | | | |
| F | | | | | 3 | | | | | | | | | | | | | | | | | | | | |
| G | | | | | | 2 | | | | | | | | | | | | | | | | | | | |
| H | | | | | | | | | | | | | | | | | | | | | | | | | |
| I | | | | | | | | | | | | | | | | | | | | | | | | | |
| J | | | | | | | | | | | | | | | | | | | | | | | | | |
| K | | | | | | | | | | | | | | | | | | | | | | | | | |
| L | | | | | | | | | | | | | | | | | | | | | | | | | |
| M | | | | | | | | | | | | | | | | | | | | | | | | | |
| N | | | | | | | | | | | | | | | | | | | | | | | | | |
| O | | | | | | | | | | | | | | | | | | | | | | | | | |
| P | | | | | | | | | | | | | | | | | | | | | | | | | |
| Q | | | | | | | | | | | | | | | | | | | | | | | | | |
| R | | | | | | | | | | | | | | | | | | | | | | | | | |
| S | | | | | | | | | | | | | | | | | | | | | | | | | |
| T | | | | | | | | | | | | | | | | | | | | | | | | | |
| U | | | | | | | | | | | | | | | | | | | | | | | | | |
| V | | | | | | | | | | | | | | | | | | | | | | | | | |
| W | | | | | | | | | | | | | | | | | | | | | | | | | |
| X | | | | | | | | | | | | | | | | | | | | | | | | | |
| Y | | | | | | | | | | | | | | | | | | | | | | | | | |
| Z | | | | | | | | | | | | | | | | | | | | | | | | | |

PLACE MONUMENT SYMBOL (◆) AT PROPER LOCATION ON ABOVE INDEX

EXAMPLE



UNION TWP
ROCK COUNTY WI

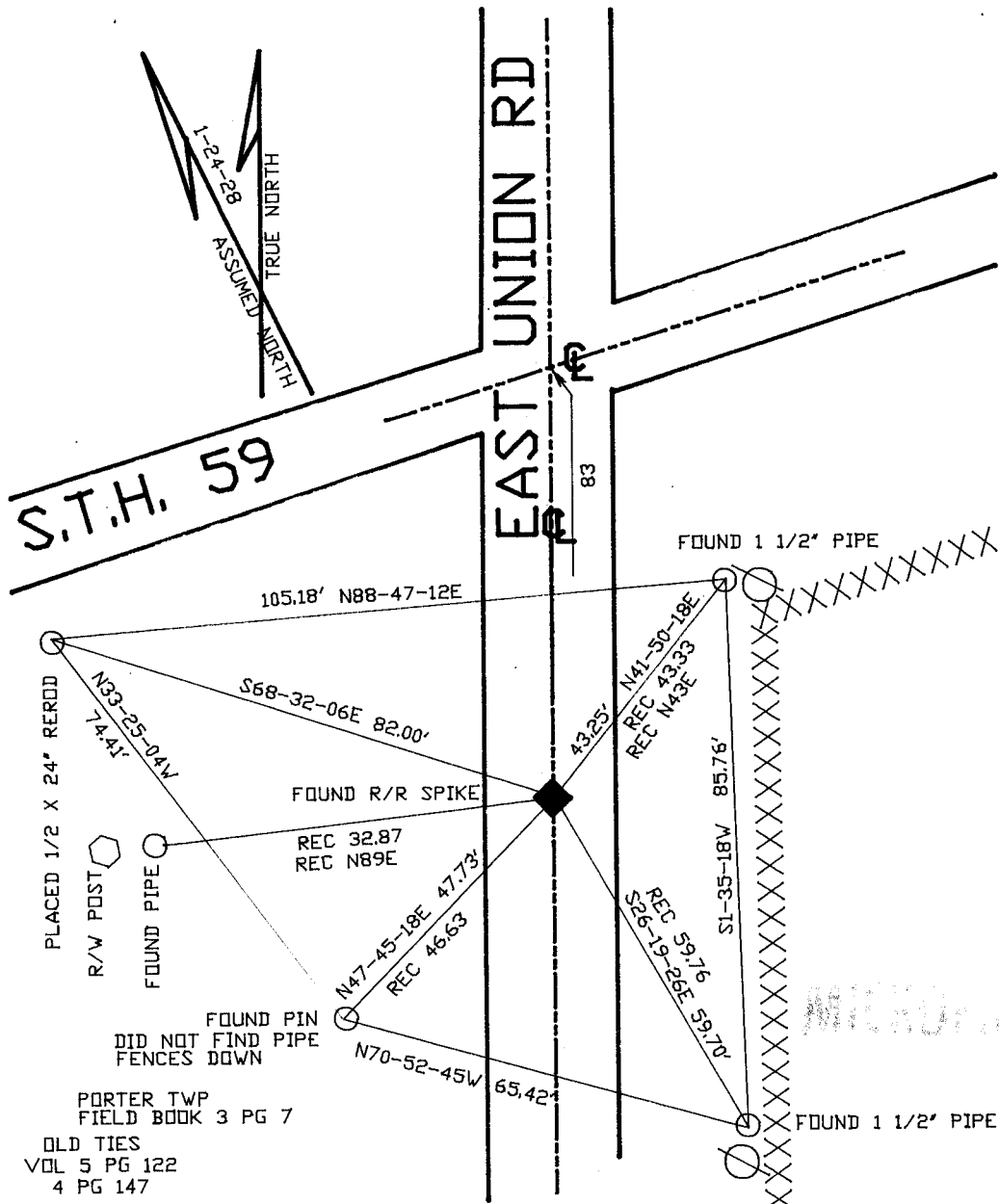
IF AVAILABLE
STATE PLANE COORDINATES

North (Y) _____ Eleve. (Z) _____
 East (X) _____ Zone _____
 Hor. Datum _____ Vert. Datum _____

◆ CORNER MONUMENT

○ WITNESS MONUMENT

BEARINGS ARE BASED ON: ASSUMED



SHEET _____ OF _____

CORNER CODE: **E 23**

(B) Describe any record evidence, monument evidence, occupational evidence, testimonial evidence or any other material evidence you considered, and whether the monument was found or placed.

1870 RUGER REMONUMENTATION FIELD NOTES FOUND OLD STAKE. PLACED CUT LIMESTONE. SHOWS A DISTANCE OF 2618.88 TO SW CORNER AND 2620.20 TO SE CORNER OF SECTION 1.

1909 KERCH VOL 3 PG 51 SHOWS "MON". USED CORNER TO SUBDIVIDE THE SE 1/4 OF SECTION 12.

1962 BATTERMAN JR. VOL 4 PG 147 FOUND CUT STONE. PLACED TIES.

1976 BARNES VOL 5 PG 122 REPLACED CORNER FROM EXISTING TIES.

FOUND R/R SPIKE.

C) Was the corner restored through acceptance of (1) an obliterated evidence location, or, (2) a found perpetuated location?

ACCEPTED FOUND PERPETUATED LOCATION.

D) Describe any material discrepancy between the location of the corner as restored or reestablished and the location of that corner as previously restored or reestablished by distance and direction. Show the discrepancy on the plan view drawing under (a), above. Show the distances between the corner as previously restored or reestablished and (1) the corner as restored or reestablished, and (2) to at least 4 of the witness monuments shown on the drawing in (a), above.

(E) Was the corner reestablished through lost corner proportionate methods? If so, show the method, including the directions and distances to other public land survey corners used as evidence or used for proportioning the corner location.

NO

E 1/4 COR SEC 1

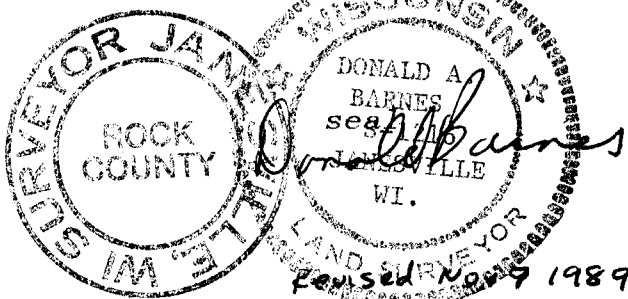
RUGER 2657.16 VAR 6-37
S0-52-33W 2655.68

| | | | | |
|--------|--------------------|-------|--------------------|--------|
| SW COR | VAR 6-18 | N 1/4 | VAR 6-18 | SE COR |
| SEC 1 | RUGER 2618.88 | SEC 1 | RUGER 2620.20 | SEC 1 |
| | S88-32-19E 2624.55 | | S87-39-59E 2621.10 | |

S0-44-52W 2655.68
RUGER 2657.16 VAR 6-30

E 1/4 COR SEC 12

I, Donald Barnes, hereby certify that the corner points as identified by the corner code index were, in a field survey on, July 25, 1988, established, re-established, monumented, re-monumented, recovered or restored as expressed below and in conformance with the regulations and rules as required in the current manual of survey instructions of the United States Department of Interior, Bureau of Land Management.



AFFIX YOUR LAND SURVEYOR SEAL

COUNTY SURVEYOR FILING DATA

Date of computer entry _____

Date microfilmed _____

Number of included sheets _____

CORNER CODE